

# Trends in Integration:

How Emerging Use Cases in Cloud, Mobile and Analytics are Changing the Game

**Andrew\_Humphreys@uk.ibm.com**  
**Sr Product Manager, IBM WebSphere Integration**

# 2015 Predictions..



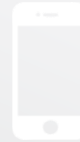
## 2.5 quintillion

*Bytes of data will be created daily*



## 534 billion

*Dollars will be made in mobile transactions*



## 85%

*Of enterprises will use external cloud services*



## By 2015

*Integration of data on mobile devices will represent 20% of integration spending*

## By 2016

*Midsized to large companies will spend 33% more on integration than in 2013*

## By 2017

*Over two-thirds of all new integration flows will extend outside the enterprise firewall*

- The cost of doing application integration will increase as companies do more **B2B e-commerce, information processing, and mobile, social and cloud computing**.
- The accommodation of more mobile devices, alone, will substantially increase the amount of work — and cost — required for application integration.
- Companies will **spend more** on application integration than on new application systems.

# Integration needs are changing and growing...

## Systems of Record

## Systems of Engagement

Mainframe  
Terminal

Client / Server,  
Web / Desktop

Mobile,  
M2M, Cloud,  
Social, Big  
Data

**1st Platform**

**2nd Platform**

**3rd Platform**

*Thousands of  
applications*

*10s of Thousands of apps*

*Millions of apps*

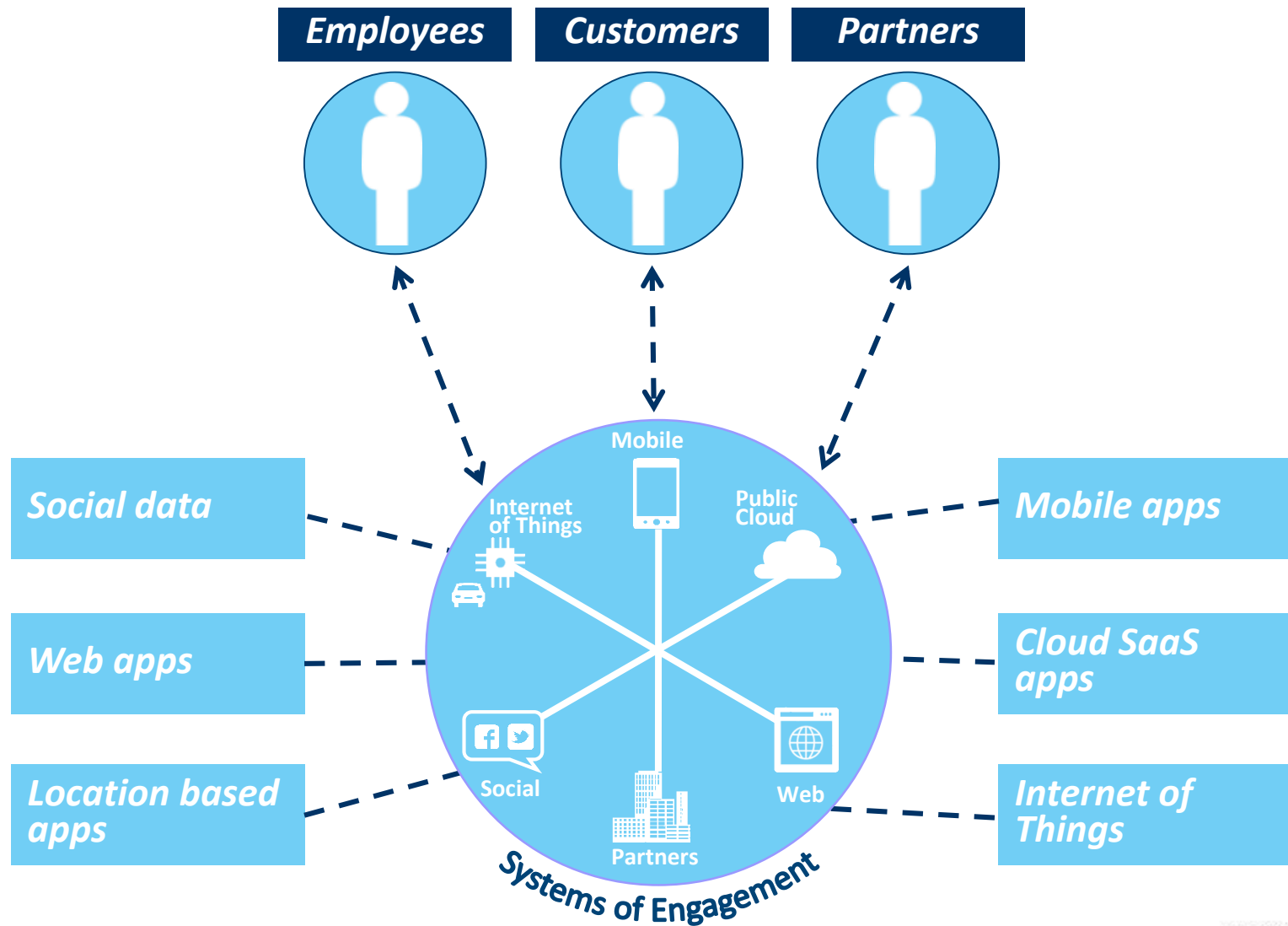
*Millions of users*

*100s of Millions of users*

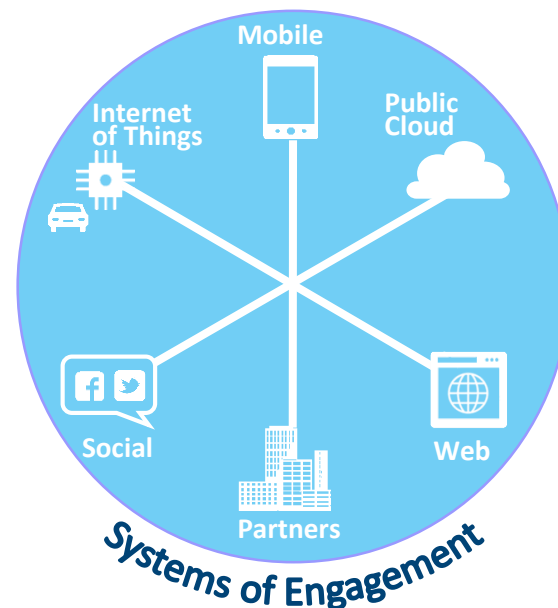
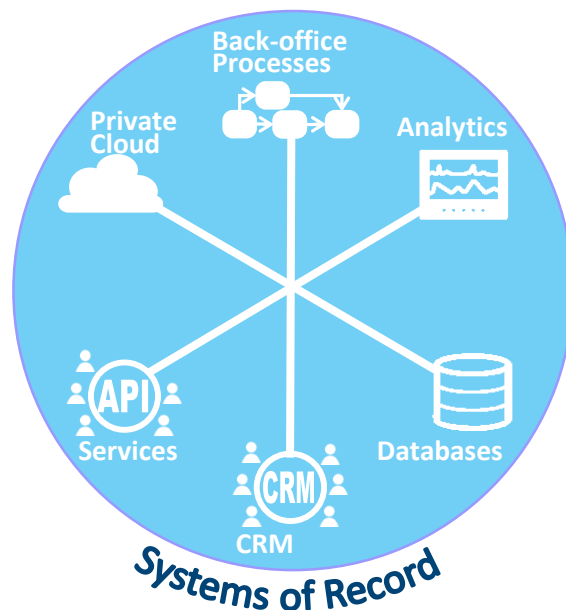
*Billions of users*

*Trillions of things*

# Systems of Engagement



# Fundamentally different types of systems



**Sponsors**

IT

CMO

**Creators**

In-house and packaged

Contractors

**Value**

Source of truth

Dialog and discovery

**Interactions**

Transactional, Asynchronous

Conversational, Synchronous

**Pace of change**

Ideally low

Ideally high

**Lifecycle**

Permanent and foundational

Transient and fluid

# Lack of integration impedes innovation

“integration with back-office systems is **biggest barrier to...systems of engagement**”

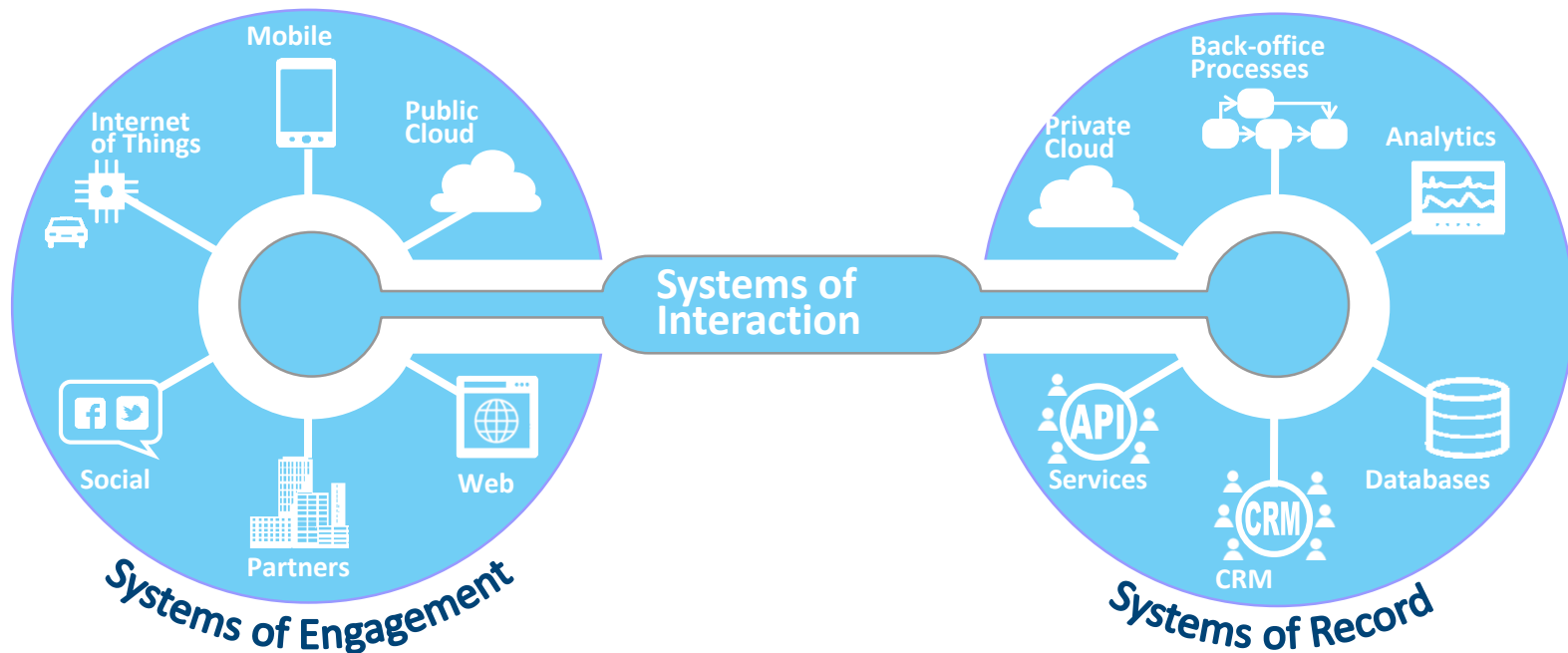
## What is your most significant technical barrier to creating effective customer-facing systems? (*Systems of Engagement*)



Source: A commissioned study conducted by Forrester Consulting on behalf of IBM, Q1 2013  
*Systems of Engagement Demand New Integration Solutions – And a New IT*, Forrester, April 2013

# Systems of Interaction

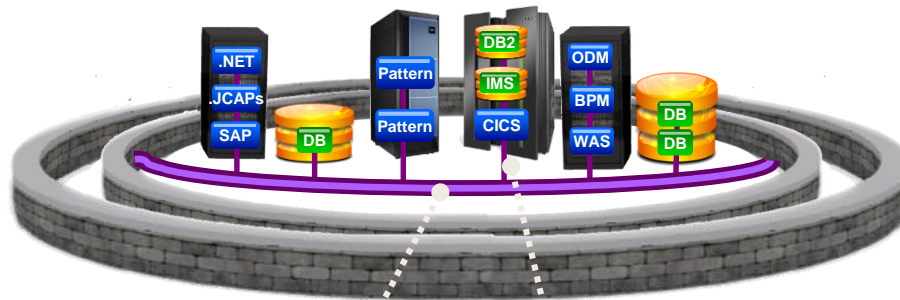
- Bridge **tomorrow's innovations** with those powering the businesses today
- Bring together **Systems of Record** and **Systems of Engagement**
- Able to **innovate rapidly** by combining new and existing capabilities







# What Powers the Systems of Interaction?



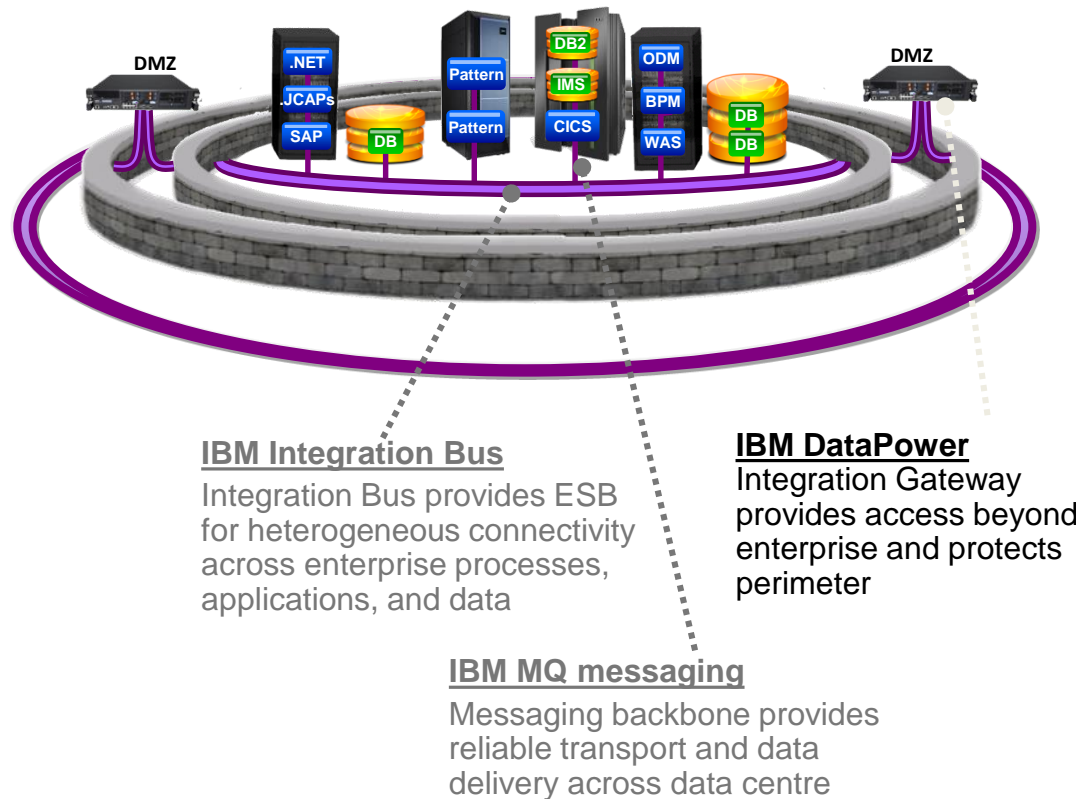
## **IBM Integration Bus**

Integration Bus provides ESB for heterogeneous connectivity across enterprise processes, applications, and data

## **IBM MQ messaging**

Messaging backbone provides reliable transport and data delivery across data centre

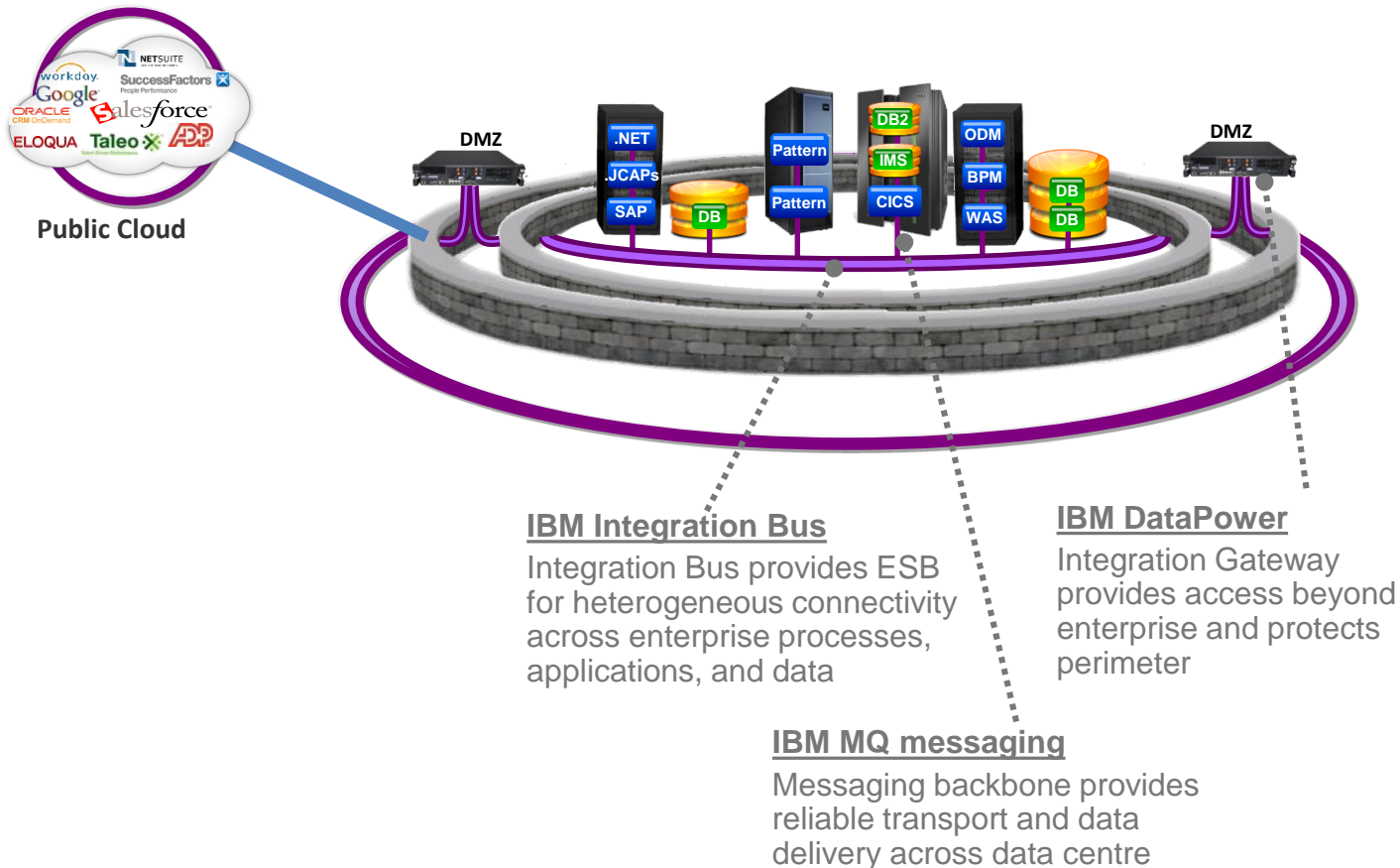
# What Powers the Systems of Interaction?



# What Powers the Systems of Interaction?

## **IBM Cast Iron**

Syncing data with  
SaaS apps to leverage  
new cloud economy



# What Powers the Systems of Interaction?

## IBM Cast Iron

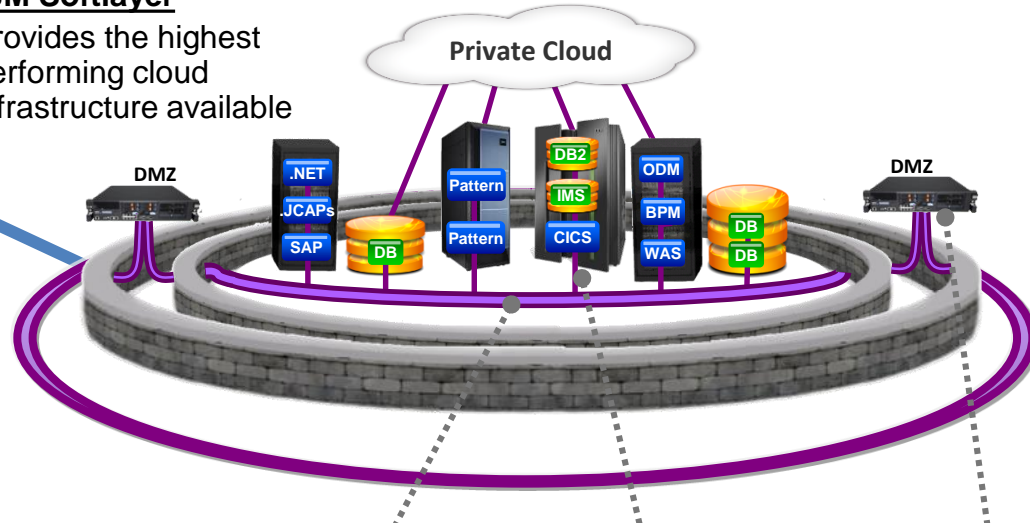
Synching data with SaaS apps to leverage new cloud economy

## IBM PureApplication System

Enterprises looking to achieve "more with less" by better managing IT resources as collectives

## IBM Softlayer

Provides the highest performing cloud infrastructure available



## IBM Integration Bus

Integration Bus provides ESB for heterogeneous connectivity across enterprise processes, applications, and data

## IBM DataPower

Integration Gateway provides access beyond enterprise and protects perimeter

## IBM MQ messaging

Messaging backbone provides reliable transport and data delivery across data centre

# What Powers the Systems of Interaction?

## IBM Cast Iron

Syncing data with SaaS apps to leverage new cloud economy

## IBM PureApplication System

Enterprises looking to achieve "more with less" by better managing IT resources as collectives

## IBM Softlayer

Provides the highest performing cloud infrastructure available



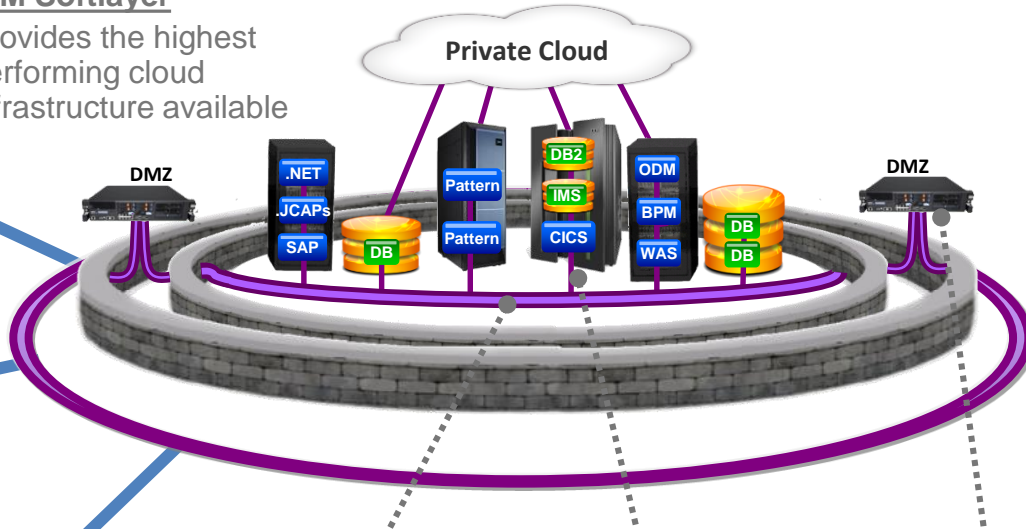
## IBM Worklight

Productive multi-device development



## IBM IoT

Reliable, efficient messaging for mobiles and sensors



## IBM Integration Bus

Integration Bus provides ESB for heterogeneous connectivity across enterprise processes, applications, and data

## IBM DataPower

Integration Gateway provides access beyond enterprise and protects perimeter

## IBM MQ messaging

Messaging backbone provides reliable transport and data delivery across data centre

# What Powers the Systems of Interaction?

## IBM Cast Iron

Synching data with SaaS apps to leverage new cloud economy

## IBM PureApplication System

Enterprises looking to achieve "more with less" by better managing IT resources as collectives

## IBM Sterling B2Bi

Managing B2B communities of trading partners

## IBM Softlayer

Provides the highest performing cloud infrastructure available



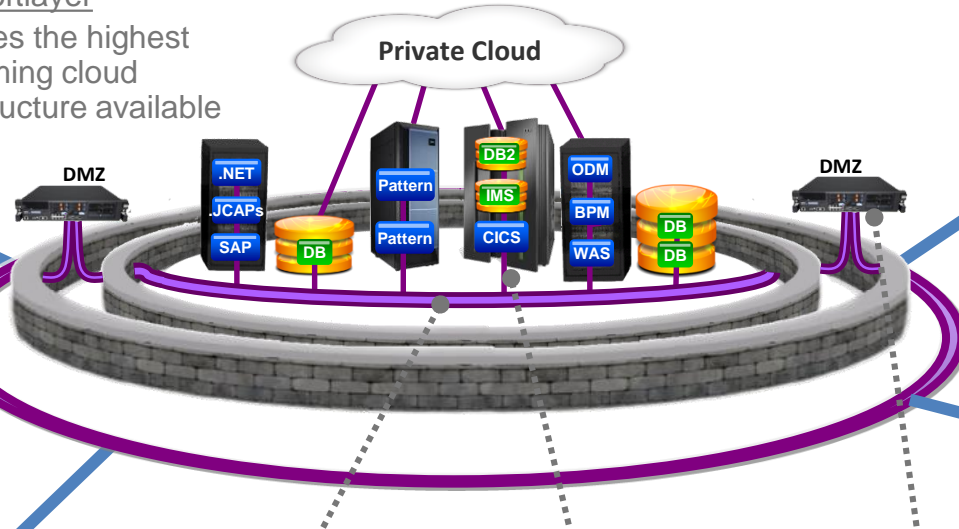
## IBM Worklight

Productive multi-device development



## IBM IoT

Reliable, efficient messaging for mobiles and sensors



## IBM Integration Bus

Integration Bus provides ESB for heterogeneous connectivity across enterprise processes, applications, and data

## IBM DataPower

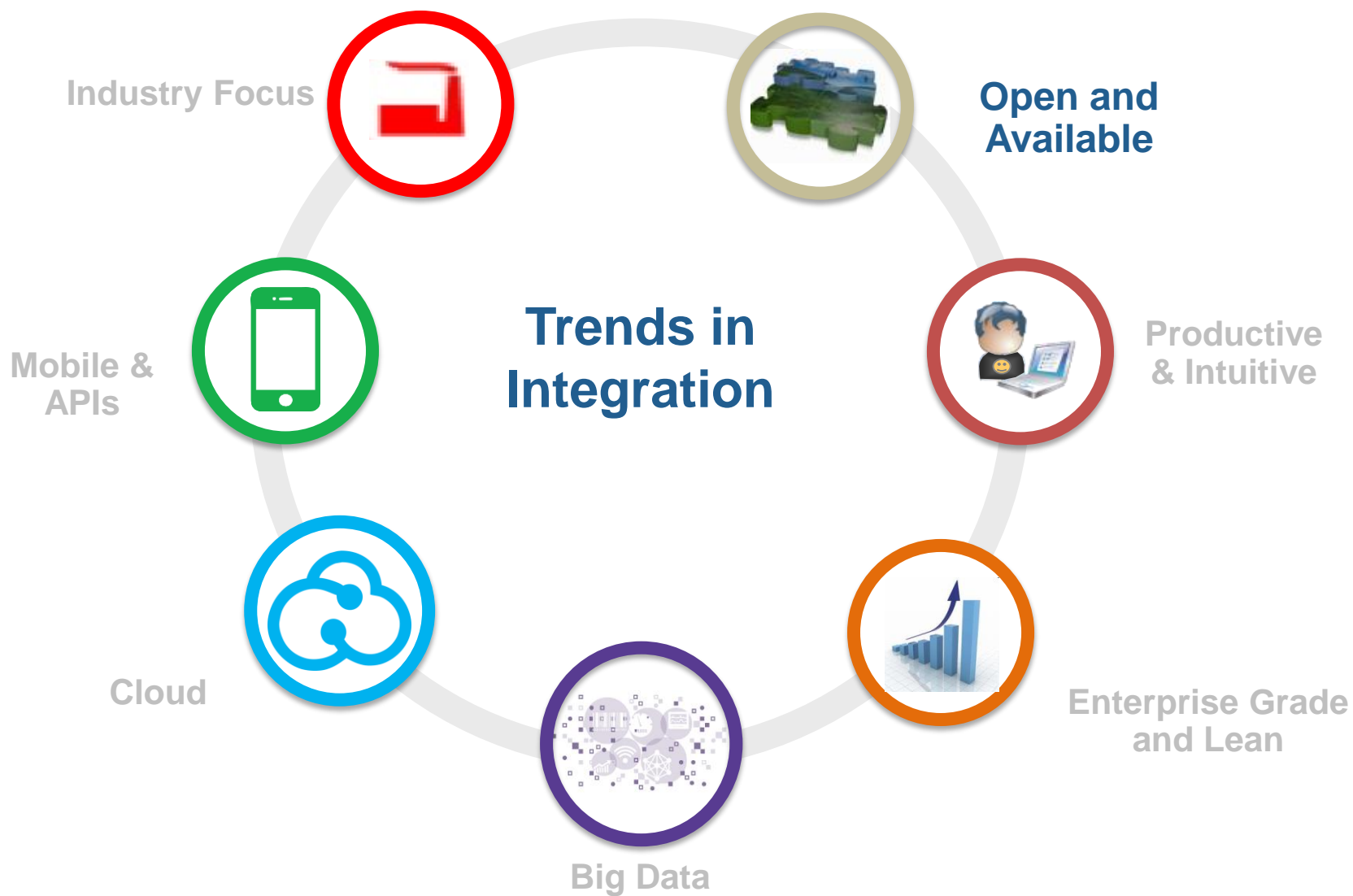
Integration Gateway provides access beyond enterprise and protects perimeter

## IBM MQ messaging

Messaging backbone provides reliable transport and data delivery across data centre

## IBM API Management

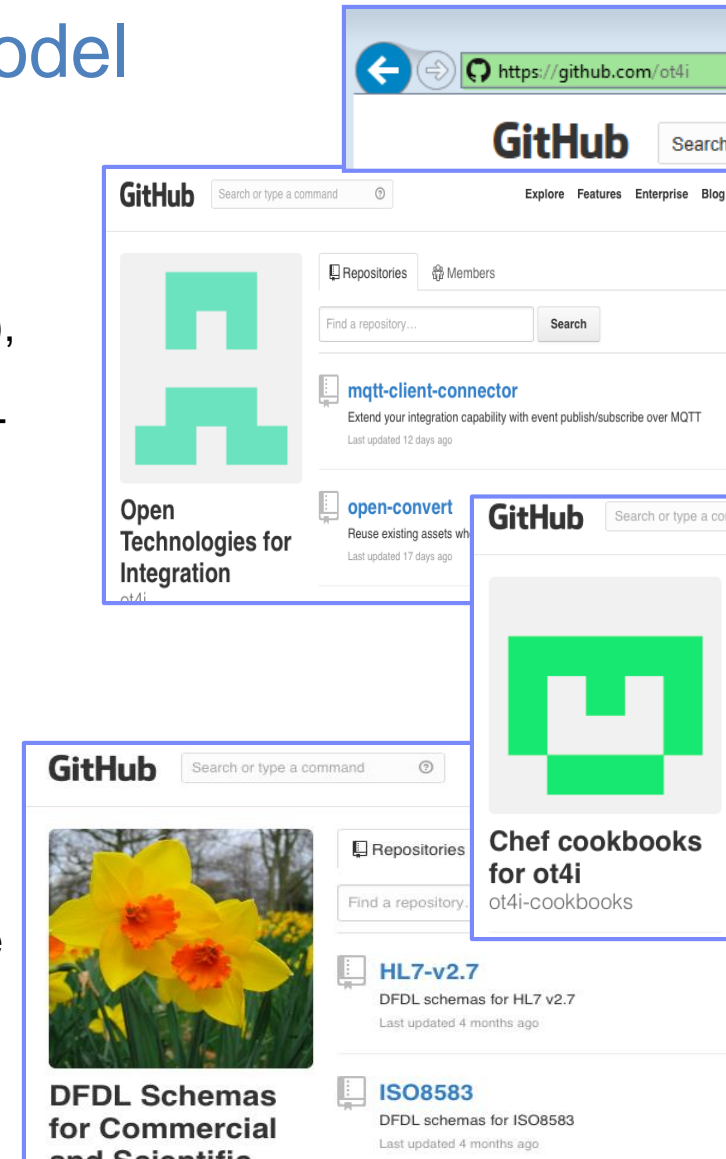
Open up access to encourage innovation from App Developers





# IBM Integration: supporting standards, skills and an open contribution model

- **No single standard** for integration software
- **Extensive standards support** in IBM Integration for various aspects of integration including:
  - Protocols: SOAP, HTTP/S, TCP/IP, REST, S(FTP), SMTP, MQTT, JMS and SOAP/JMS...
  - Web services: WS-I, WS-Trust, WS-Security, WS-RM...
  - Data formats: XML, XSD, DFDL, JSON, COBOL, CORBA...
  - Industry formats: ACORD AL3, CSV, EDIFACT, FIX, HL7, SWIFT, TLOG, X12, ISO8583...
- **Exploit and contribute to open source** integration components
  - Focus on transferable and embeddable assets
  - Source freely available on popular Github website under flexible Eclipse Public License
  - Enables both IBM and Community contributions and modifications





# Free Developer Editions and Trial Versions

- IBM Integration Bus and MQ Developer Editions **freely downloadable** from ibm.com
- Available for anyone to download, install and evaluate the latest capabilities without needing to purchase licenses
- Full product install with usage stipulations
  - Full function, Limits performance
- **...No timebombs!**
- CastIron Live
  - 30 day free trial

Download IBM MQ Advanced for Developers at no charge

Try the software

IBM Software > Products > Connectivity, integration and SOA > Integration foundation >

## IBM Integration Bus

Family

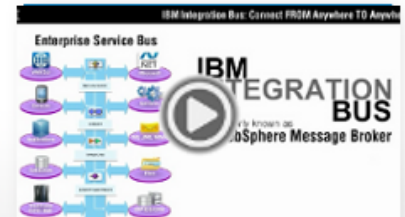
Scenarios

Download

An enterprise service bus enabling universal connectivity and transformation

IBM Integration Bus Advanced  
Product video

[Launch video \(00:02:25\)](#)



No charge Developer Edition

The IBM Integration Bus, formerly known as the IBM WebSphere Message Broker Family, provides a

## WebSphere Cast Iron Live

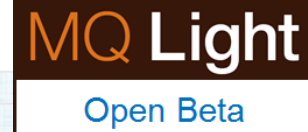
Try WebSphere Cast Iron Live for 30 days — at no charge.

[Learn more](#)



# Open Betas

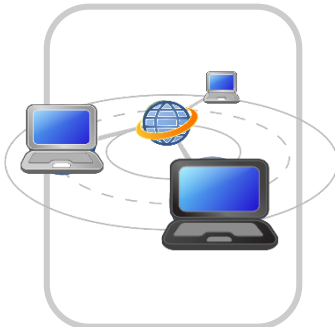
IBM Integration Bus 10.0.0 Beta > Welcome



## *IBM Integration Bus Version 10.0 Open Beta*

Welcome to the product documentation for IBM® Integration Bus Version 10.0 Open Beta, where you can find detailed instructions about how to complete the tasks to establish and maintain your integration environment. This information also describes concepts to help you understand the product, and the ways in which you can use it to solve your business problems.

- Watch a video: <http://ibm.biz/iibopenbetavideo>
- Download it: <http://ibm.biz/iibopenbeta>
- Discuss it: <http://ibm.biz/iibopenbetaforum>



### ▼ IBM Integration Bus V10 Open Beta Program Forum



#### ■ Overview

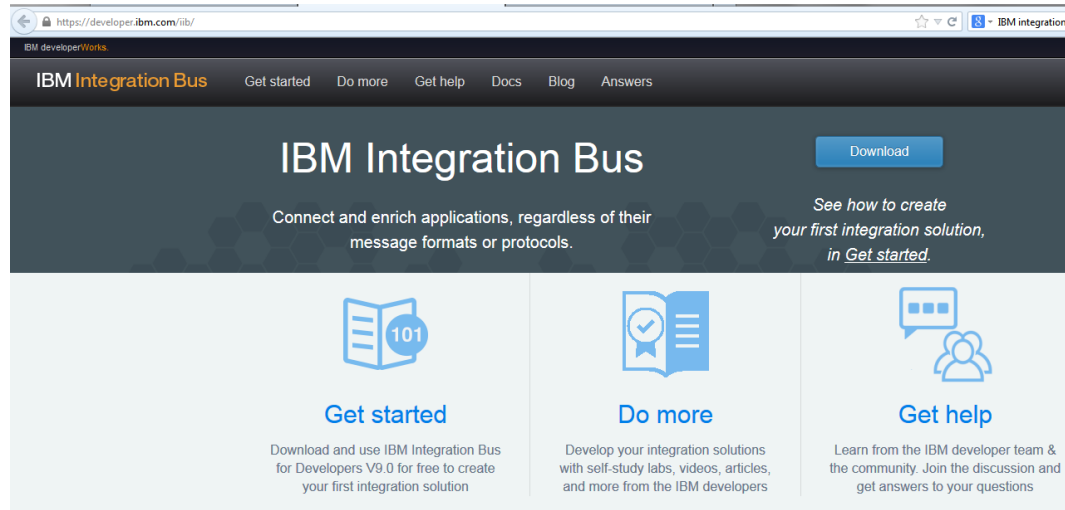
Recent Updates

Status Updates

Members

Forums

# IBM Developer Outreach



Developer sites

<https://developer.ibm.com/iib/>



IBM Developer Works Forums

<https://developer.ibm.com/answers>

The IBM Integration Bus development team is actively moderating your questions on dW answers. Join the discussion!

Get help on dWAnswers

Social Media

- Twitter @IBMintegration
- LinkedIn IBM Integration Bus group

**IBM Integration Community**

BLOG

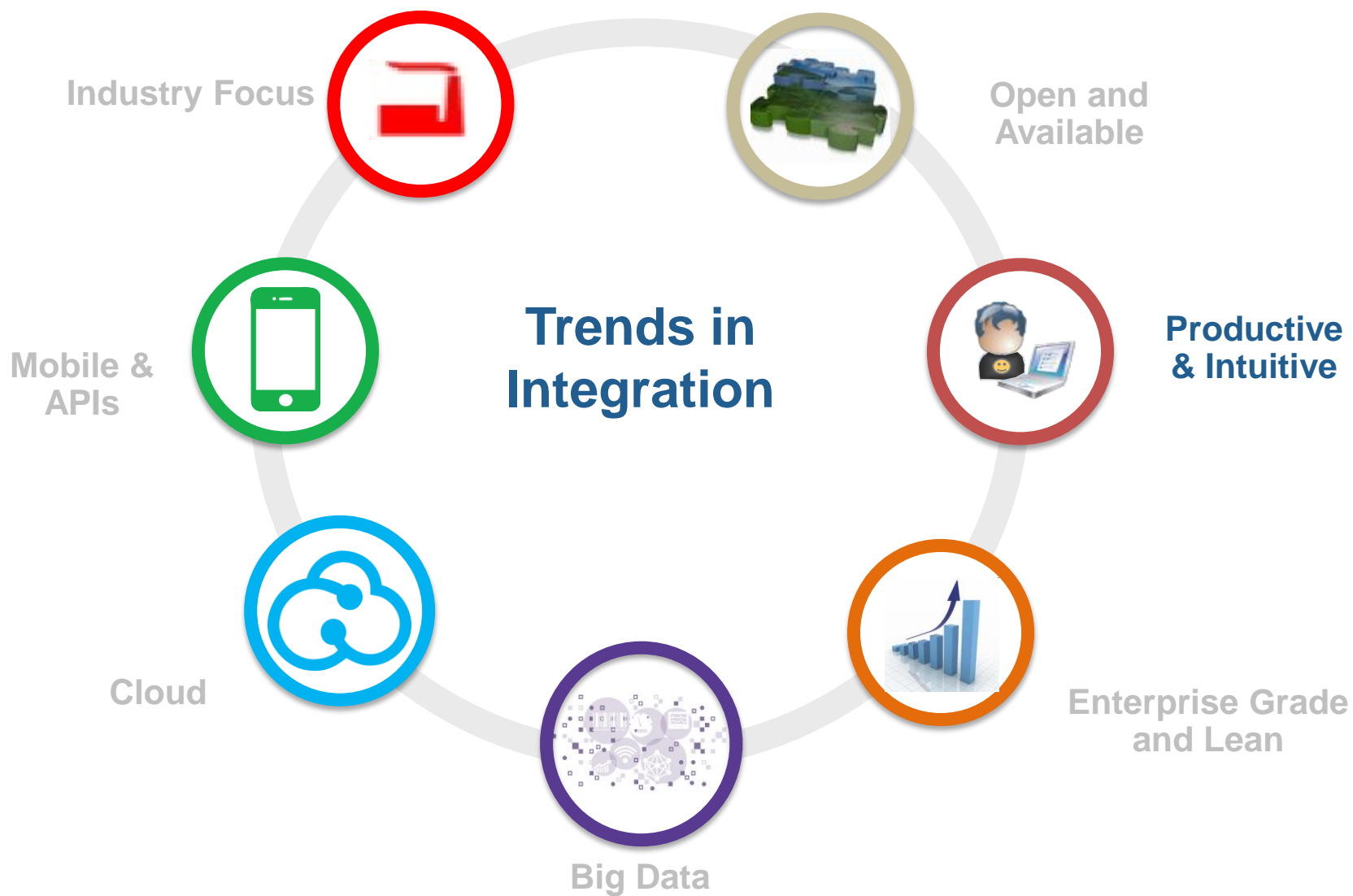
DOWNLOAD

LEARN

PARTICIPATE

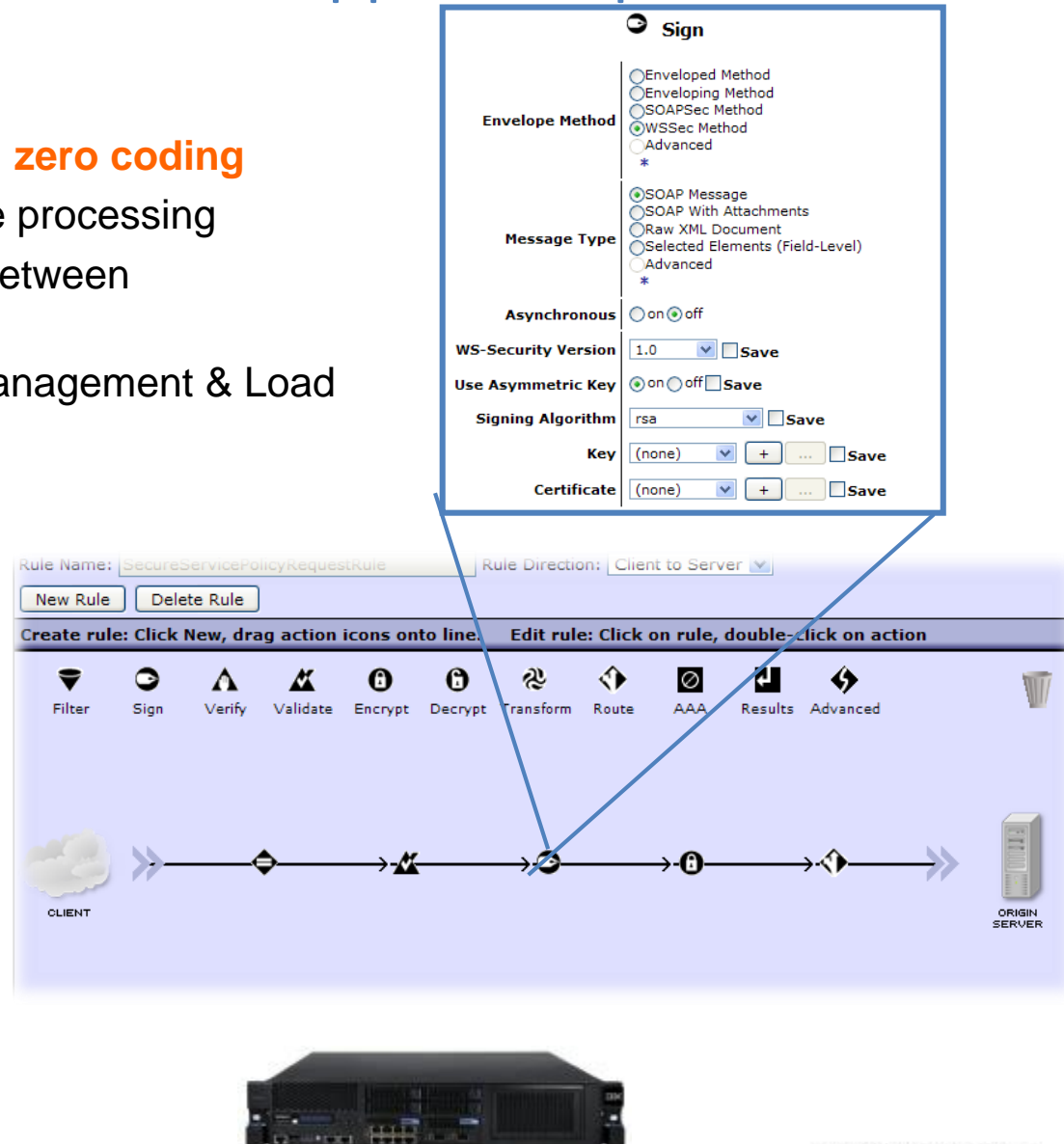
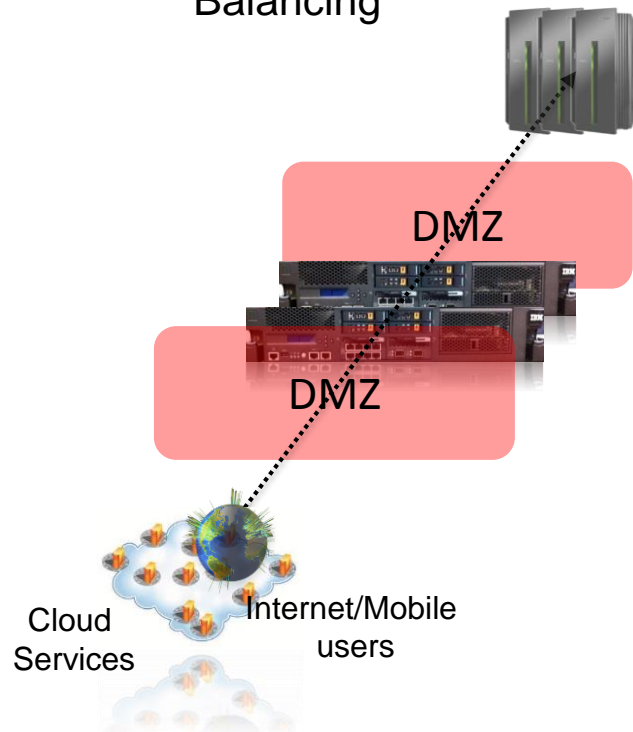


Integration  
Community  
[site](#)



# DataPower's configuration-driven approach speeds time to market

- Enforce security standards with **zero coding**
- Uses intuitive pipeline message processing
- Import/export** configurations between environments
- Plug and Play Service Level Management & Load Balancing



# IBM Integration Bus - Productive and Intuitive

## • Patterns Based Development

- Quickly create best practice solutions from pre-built templates
  - e.g. Web Service façades, Message processing, File to queue...
- IBM pre-supplied & User Defined Patterns
  - Create & share user patterns, including community downloads

## • Capture your artifacts as an exemplar for a custom pattern

## • Broadest range of platform support

- From Cloud platforms to Unix/Linux, Windows, and Mainframe

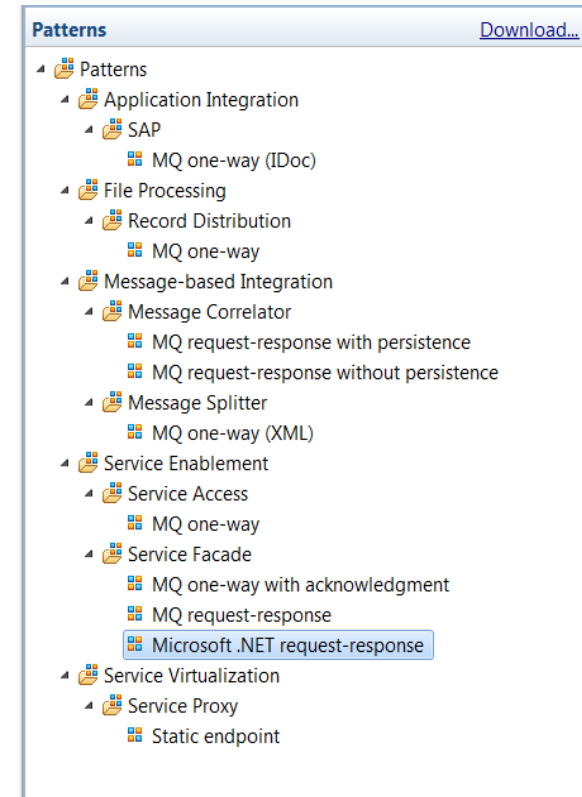
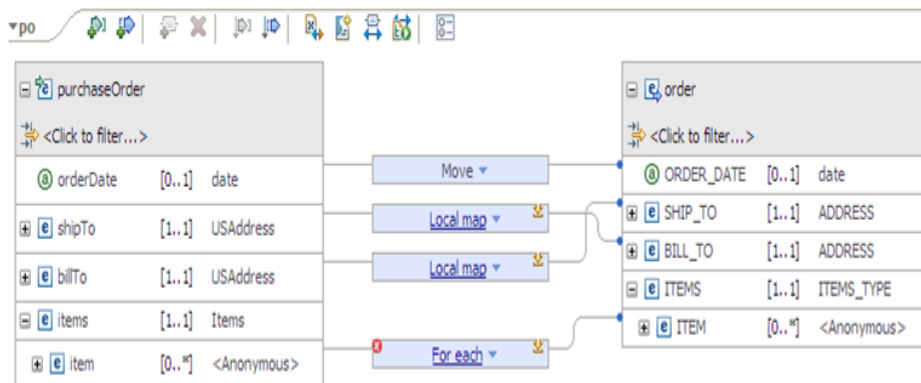
## • Do the work with the skills that fit your shop

- Transform natively in Graphical, Java, .NET, PHP, XSLT and more



## • Do the click test!

- Common tasks faster and in fewer clicks than others



# Groundbreaking Productivity



**Reuse an existing asset**

.....● 4 clicks

**Deploy & test a simple integration**

.....● 4 clicks

**Diagnose and resolve a problem**

.....● 4 clicks

**Customize a java integration**

.....● 10 clicks

**Redeploy on a new platform**

.....● drag & drop

**Enable a service to be monitored**

.....● 2 minutes



# MQ Light



THIS IS ANDY.  
(You've probably  
never heard of him)  
ANDY MADE AN APP.



IT WORKED GREAT  
WHEN THERE WERE  
JUST A FEW USERS.



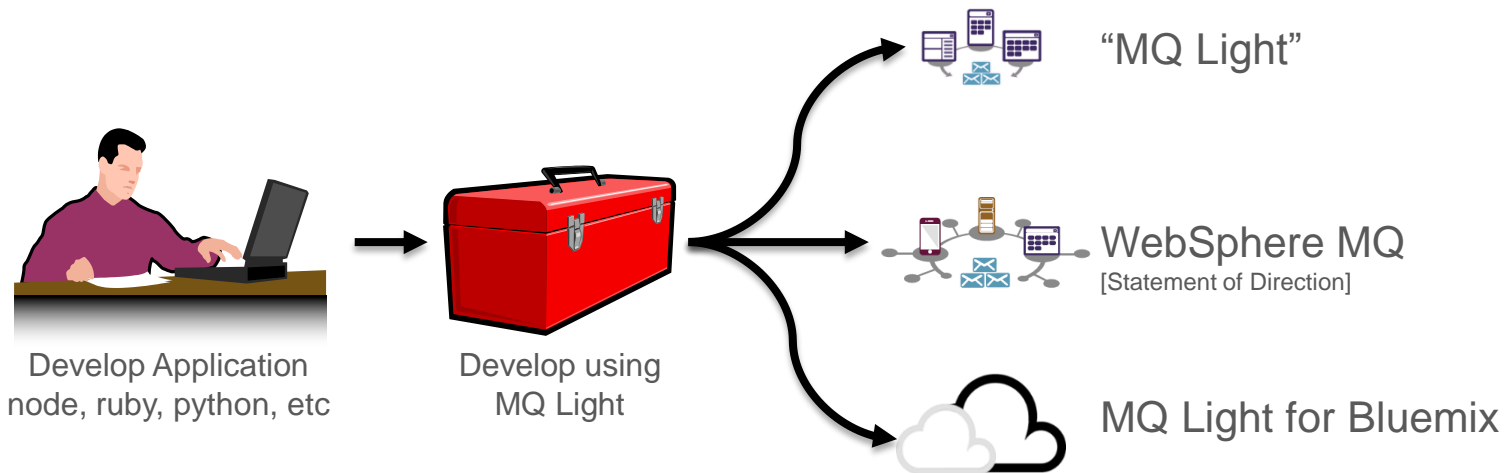
THEN, AS DEMAND  
GREW, HE GOT A BIT  
OF A SHOCK...



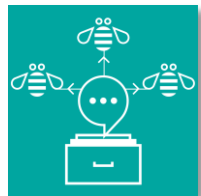
# MQ Light

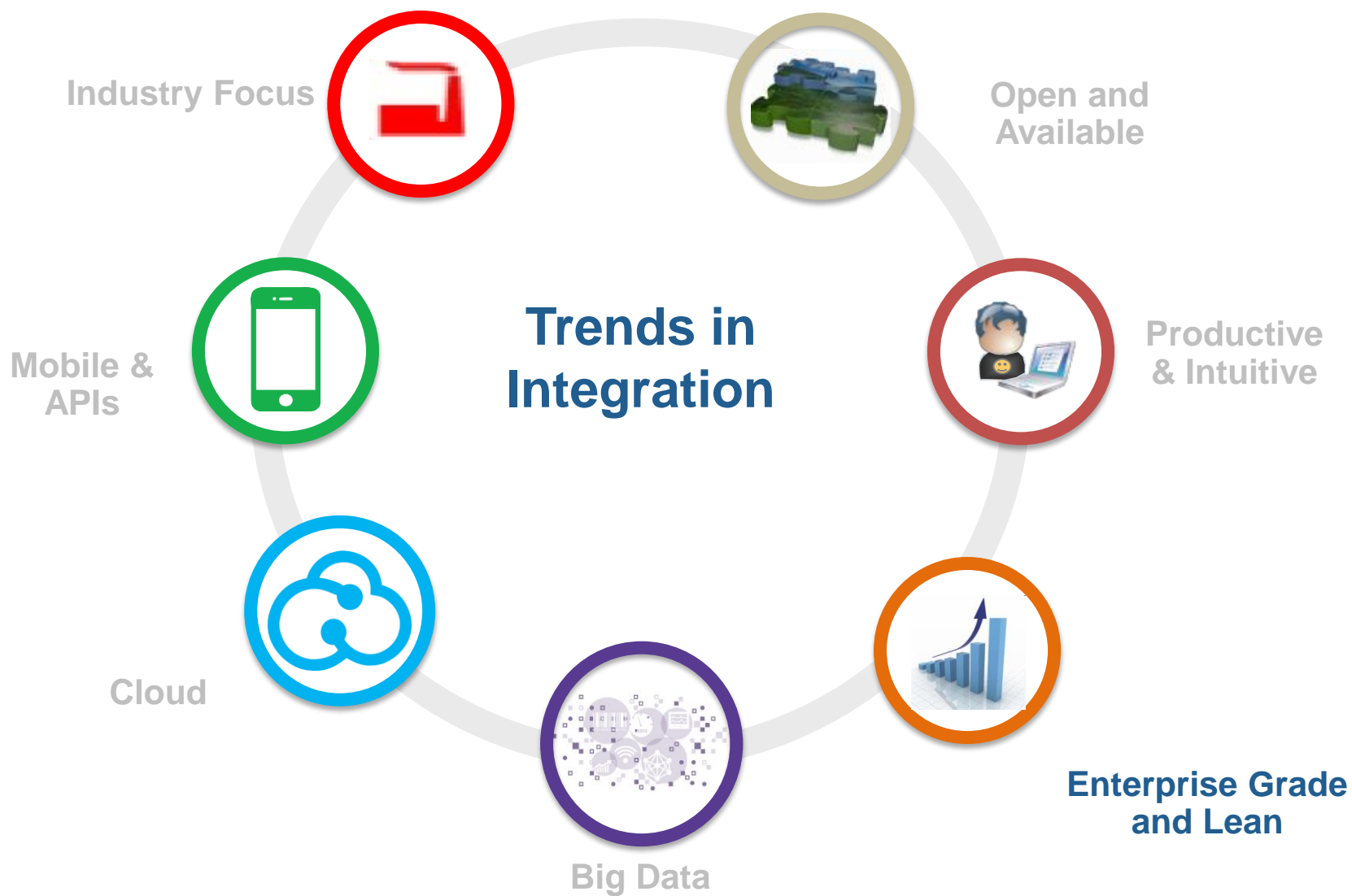
Designed for **application developers** writing apps that need to scale

- Exceptionally easy for developers to get started with
- APIs that feel native in each language
- Tooling that assists development
- Simple download and unzip – zero install
- Simple admin, no need to be an infrastructure specialist



[www.ibmmdw.net/messaging/mq-light/](http://www.ibmmdw.net/messaging/mq-light/)



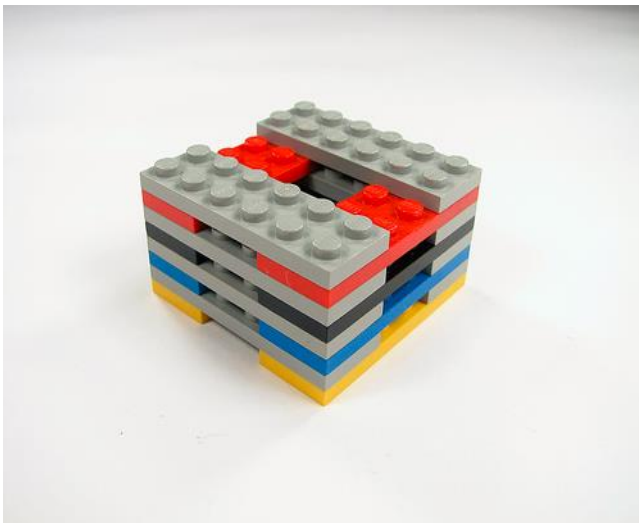


# Lean Footprint

*Zero trade off between Lean and Capability*

## Typical integration Tool

- Multiple Pre-reqs
  - Application Server
  - DataBase
- Limited platforms
- OS specific development, customisation



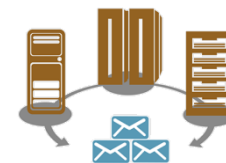
## IBM Integration Tools

- Zero pre-reqs
- Run anywhere
  - Widest range of supported platforms encompassing cloud, virtual, distributed, and mainframe.
- Unrivalled scaling and throughput.

Available  
now!

# IBM MQ V8.0 and IBM MQ V8.0 for z/OS

Scalable, secure, comprehensive connectivity using reliable messaging everywhere you need it



Enterprise  
Messaging

<i>Platforms &amp; Standards</i>	<i>Security</i>	<i>Scalability</i>	<i>System z exploitation</i>
64-bit for all platforms	Userid authentication via OS & LDAP	Multiplexed client performance	64-bit buffer pools in MQ for z/OS means less paging, more performance
Multiple Cluster Transmit Queue on all platforms	User-based authorisation for Unix	Queue manager vertical scaling	Performance and capacity
Support for JMS 2.0	AMS for IBM i & z/OS	Publish/Subscribe improvements	Performance enhancements for IBM Information Replicator (QRep)
Improved support for .Net and WCF	DNS Hostnames in CHLAUTH records	Routed publish/subscribe	Exploit zEDC compression accelerator
SHA-2 for z, i & NSS	Multiple certificates per queue manager		SMF and shared queue enhancements

© 2014 IBM Corporation

© 2013 IBM Corporation

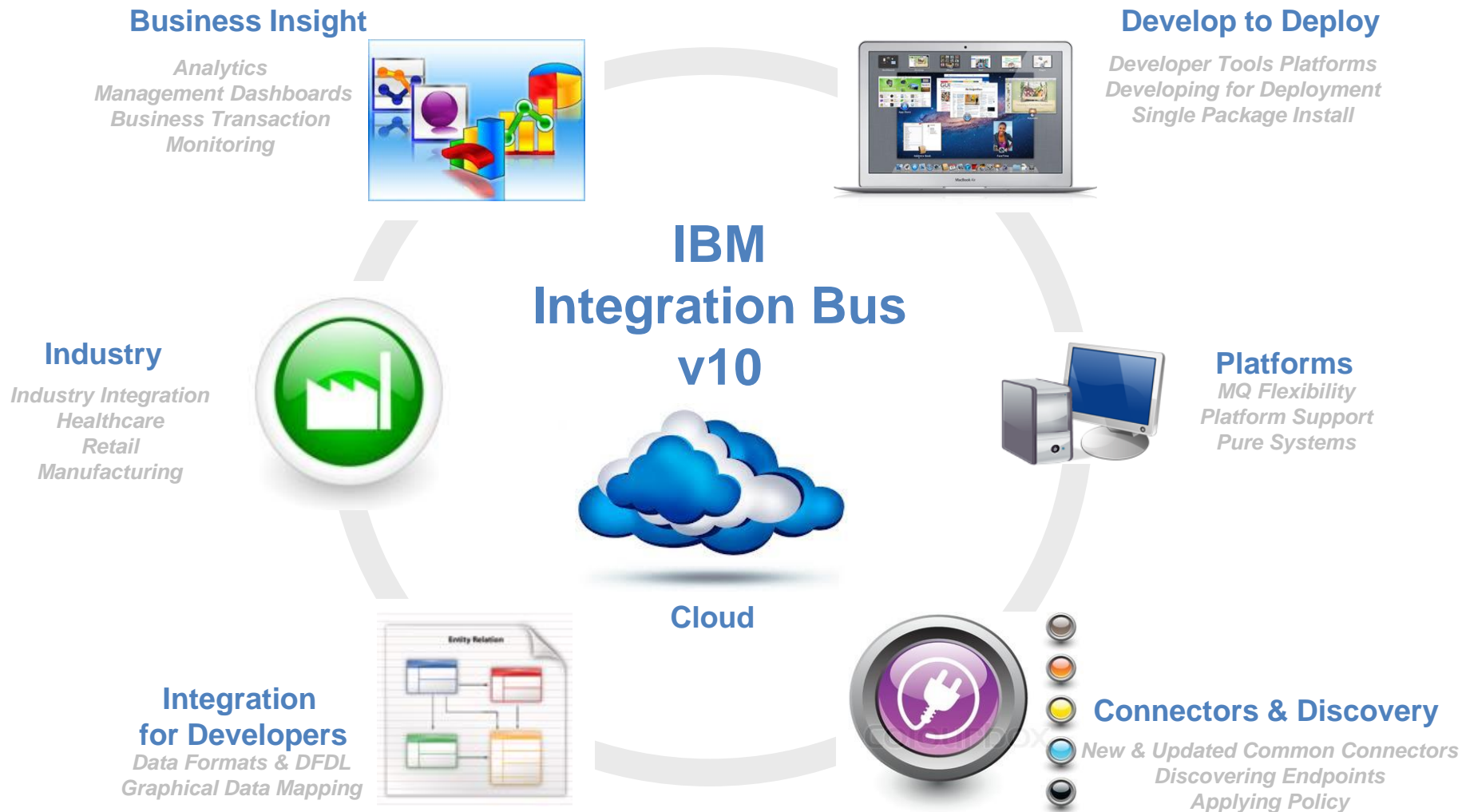
# DataPower Firmware v7.0



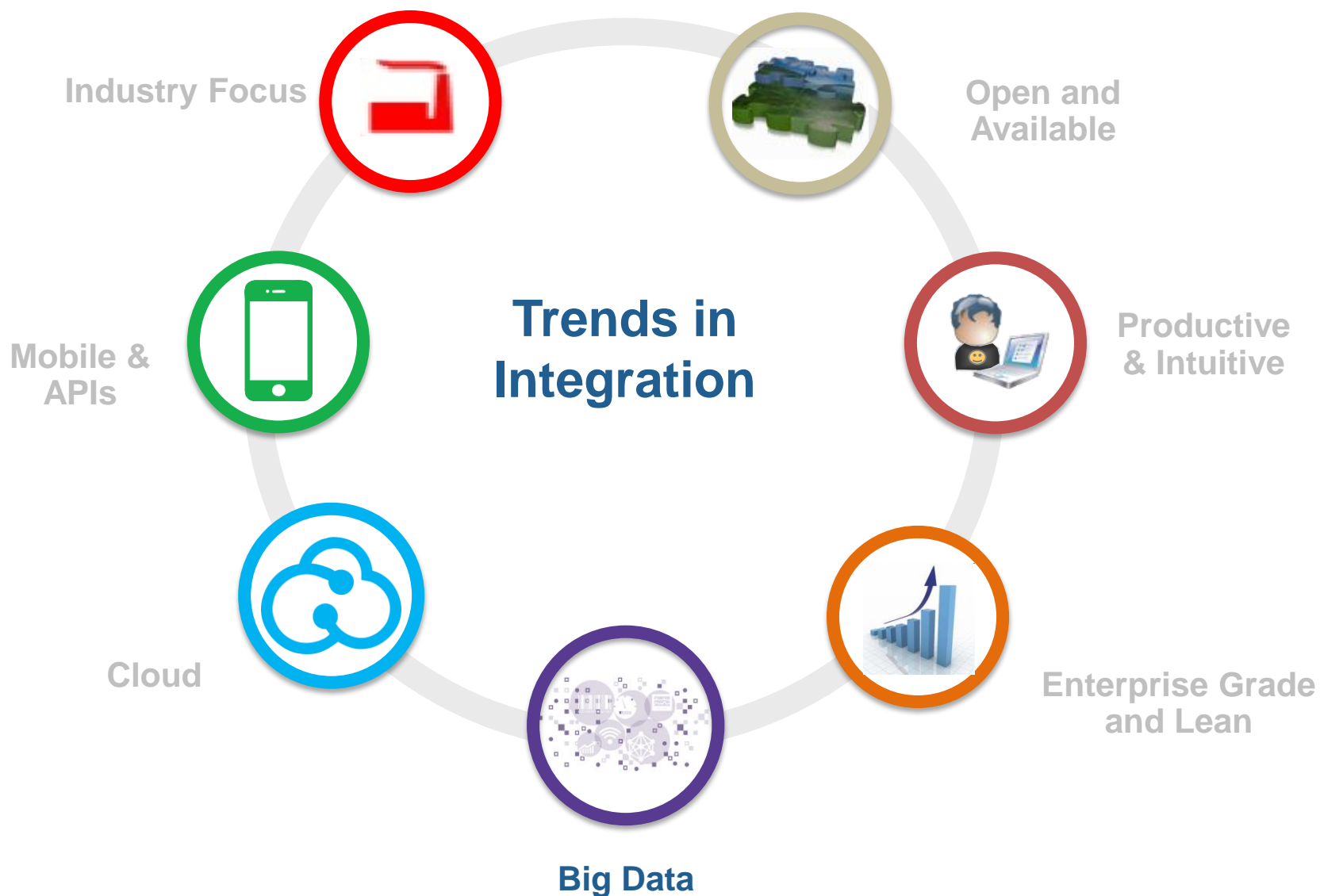
- **Patterns based development and deployment**
- **GatewayScript**: A **JavaScript-based** gateway runtime which simplifies configuration for developers and provides an easier development paradigm for **Mobile, Web, & API**
- New **Virtual Edition for Developers** provides a low cost (per user pricing) and easy to use **gateway for developers**
- Support for Citrix **XenServer** provides additional deployment flexibility for Virtual Edition deployment **on-premise & in SoftLayer**
- **WebSocket Proxy** support enables full-duplex, bi-directional, & low-latency communication for **Web & Mobile applications**
- Network redundancy & increased throughput with support for **Link Aggregation**
- **Improved security & traffic control** functionality in support of **API Management** offering



# Key Initiatives







# How big is Big Data?



## Big Data

**90%**

of data is less than  
two years old

**80%**

of the world's data is  
unstructured

**2.5**

quintillion bytes  
created daily

**168**

million emails sent  
each minute



# Easily Handle Unstructured Data from new Data Sources

## ▪ DFDL—Data Format Description Language

- Simple & powerful standard for data modelling
- Standard for binary, text & industry data formats
  - [forge.gridforum.org/projects/dfdl-wg](http://forge.gridforum.org/projects/dfdl-wg)
- In place parsing check and test data generation
- Very high performance (JIT, streaming, partial parsing, etc.)

## ▪ Graphical Mapper now supports schema-less mapping

## ▪ No parse option and no internal canonical means high throughput pass-through

The screenshot displays the IBM Graphical Mapper interface. At the top, a table shows sample data with columns A (Year), B (Make), C (Model), D (Description), and E (Price). Below the table, a yellow sticky note displays the corresponding DFDL record: `2008,SK Inc,MBTk7,"4293cc, V8",53880.00w`. The main window is titled "New Message Model" and shows the "Configure schema for CSV data" dialog. The "Record settings" section includes "End of record character" set to "Carriage Return & Line Feed - %CR;%LF;", "Blank records" set to "Skip a blank record", and a checked option "The first record is a header". The "Field settings" section shows "Number of fields" set to 3. Below the dialog, the "DFDL Test - Logical Instance" window shows a tree view of the data structure, including "Company", "Employee", and "Address" elements, with their respective values and data types.

	A	B	C	D	E
1	Year	Make	Model	Description	Price
2	2009	SK Inc	MBTk7	4293cc, V8	53880.00
3	2010	Hans On	DFDL	3000cc straight 6	31395.00
4	2010	AOD corp	MB8	4163cc, V8	51435.00

Record settings:

- End of record character: Carriage Return & Line Feed - %CR;%LF;
- Blank records: Skip a blank record
- ☒ The first record is a header

Field settings:

- Number of fields: 3

Data source: <From 'DFDL Test - Parse' view>

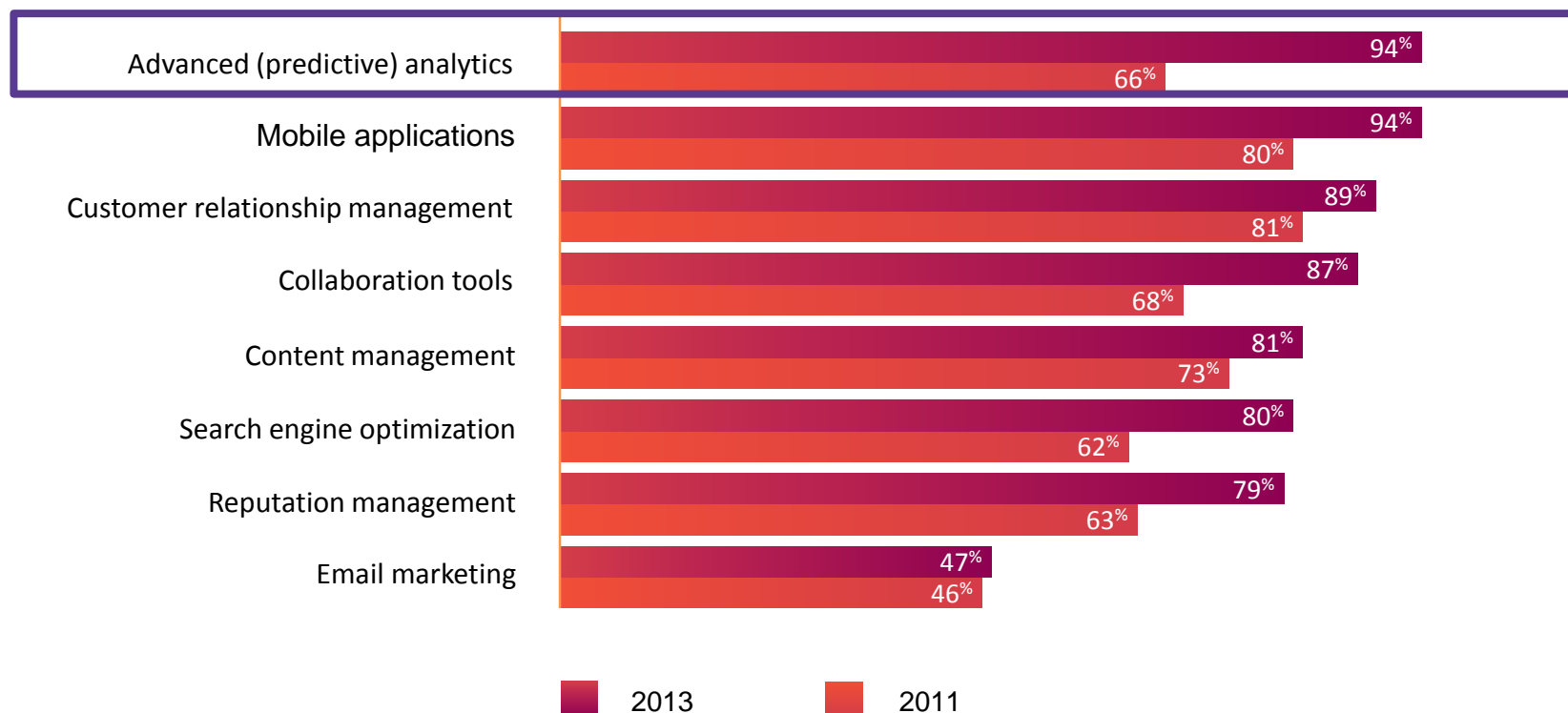
Message root: Company (/MessageModelingLibrary\_broker/Company.xsd)

Tree View XML View

Name	Type	Value
Company		
CompanyName	xs:string	My Company
Employee		
EmpNo	xs:integer	111111
Dept	xs:integer	500
EmpName	xs:string	Alice Wong
Address		
Tel	xs:string	905-347-5649
Salary	xs:decimal	135599.95
Employee		
EmpNo	xs:integer	222222

# Predictive Analytics: Using Realtime for Competitive Advantage

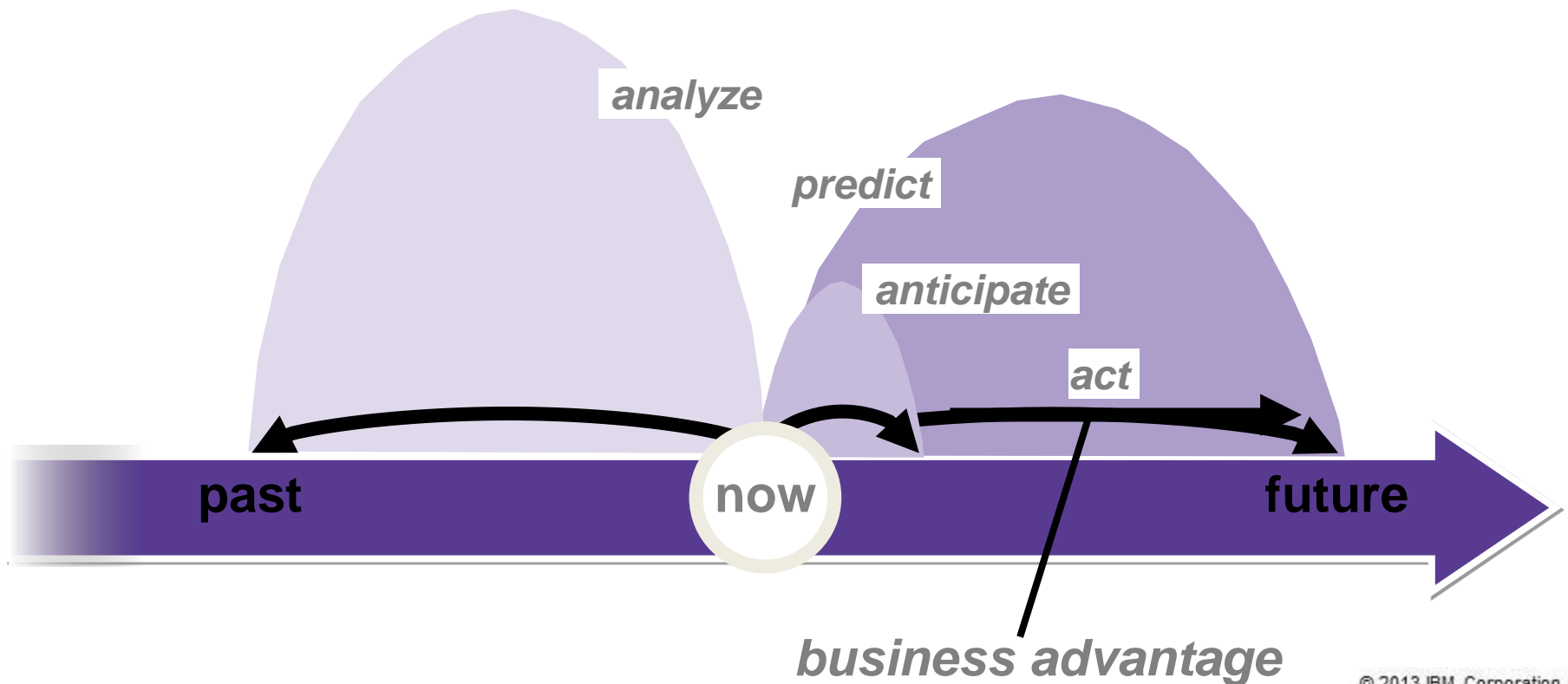
## CMO intended use of digital technologies (3 to 5 years)



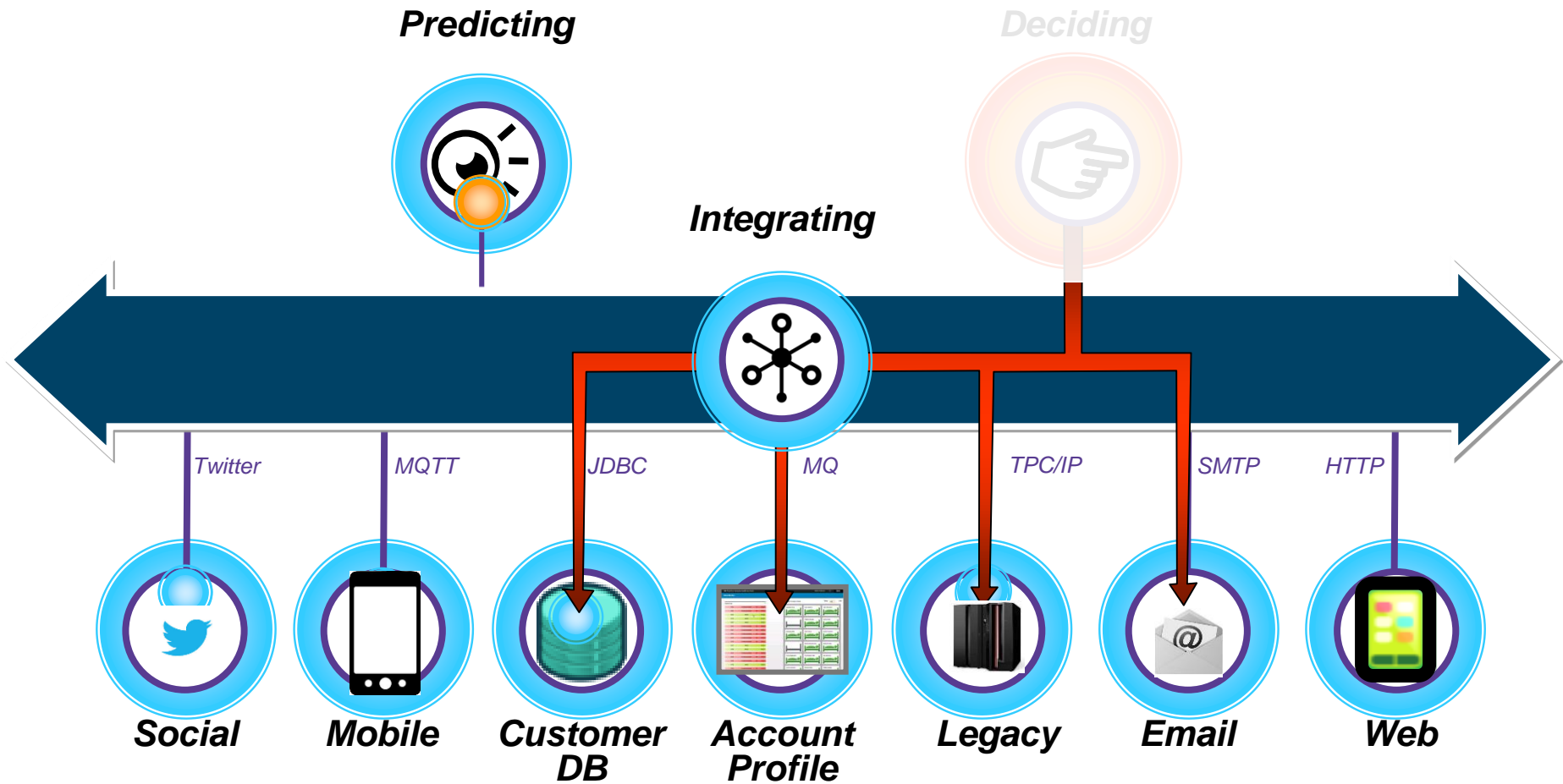
Source: Question CMO7—What is your plan around the usage of the following technologies over the next 3 to 5 years?

# Predictive Analytics in a Nutshell

- Comparing **what is happening right now** with **past experience** to **predict the future**
- **Anticipate** the changes needed to **proactively optimize** the business



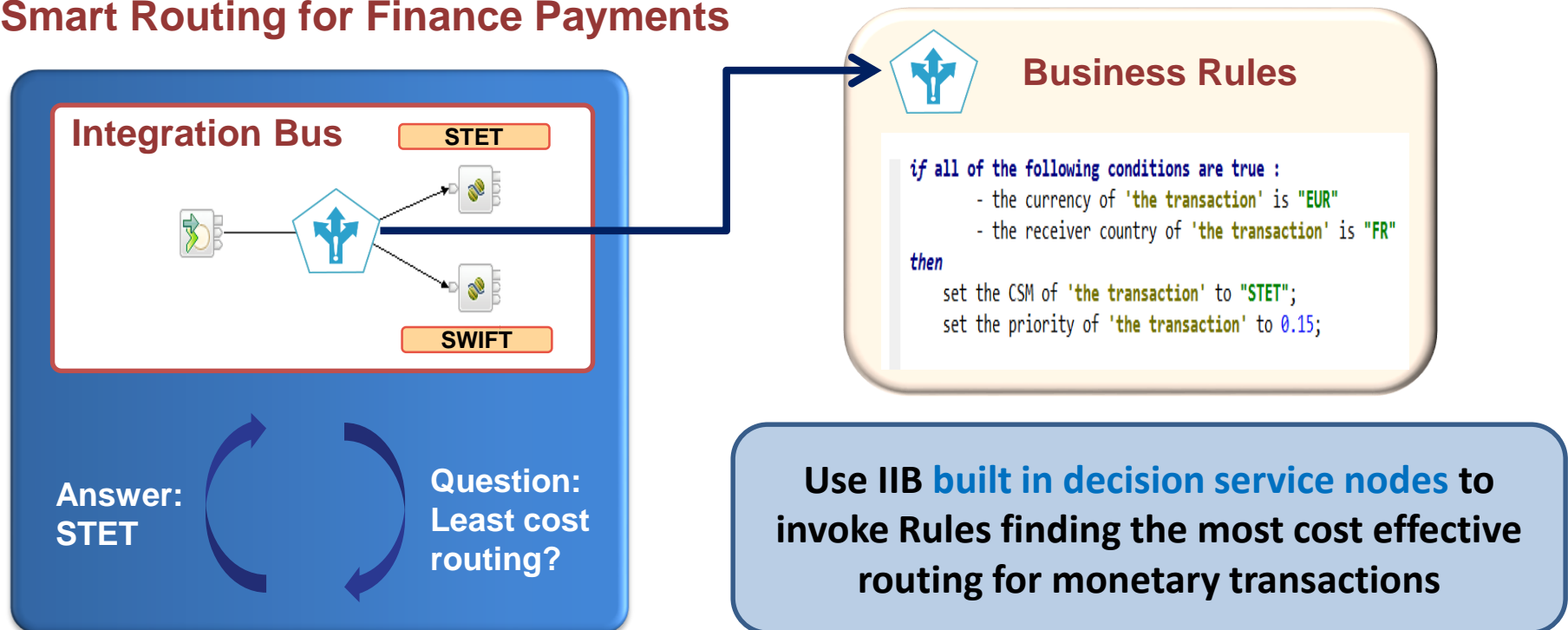
# Putting it together: Predictive Analytics in Action



# Business Rules Service: Applying insight to in-flight data

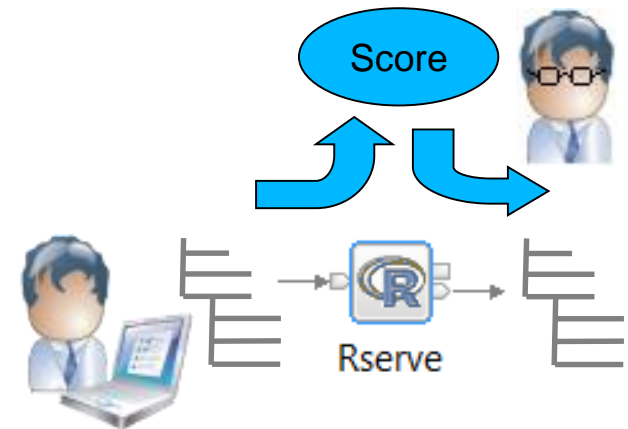
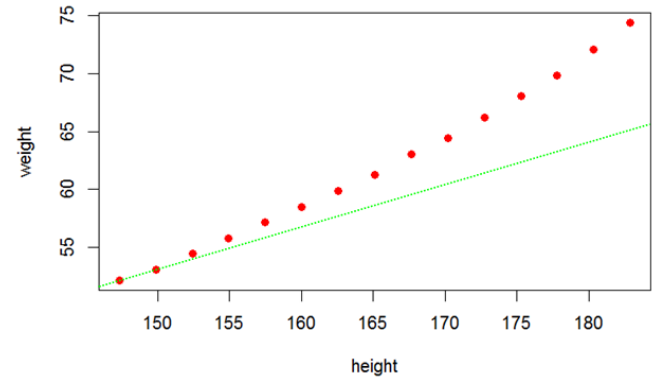
- Empower business users to design, manage and improve rule decisions with **Rule authoring tools and an embedded Rules engine**
- Invoke Rules with built in decision service nodes to inform routing, validation and transformation within integration solutions

## Example: Smart Routing for Finance Payments



# Analytics Node

- Demand is growing for analytics to be a real-time activity
- As data flows through the enterprise, IIB has visibility to score it against a predictive model
- Data Scientist Role
  - Prepares a model based on an analytics engine.
  - For example R, SPSS, SAS
- Integration Developer Role
  - Formats a data stream and applies it to a model
- Analytics node for model based decision making
  - Find & express patterns in data with analytics models
  - Analytics equivalent to Business Decision node
    - Pluggable engine for e.g. R, SPSS, SAS...

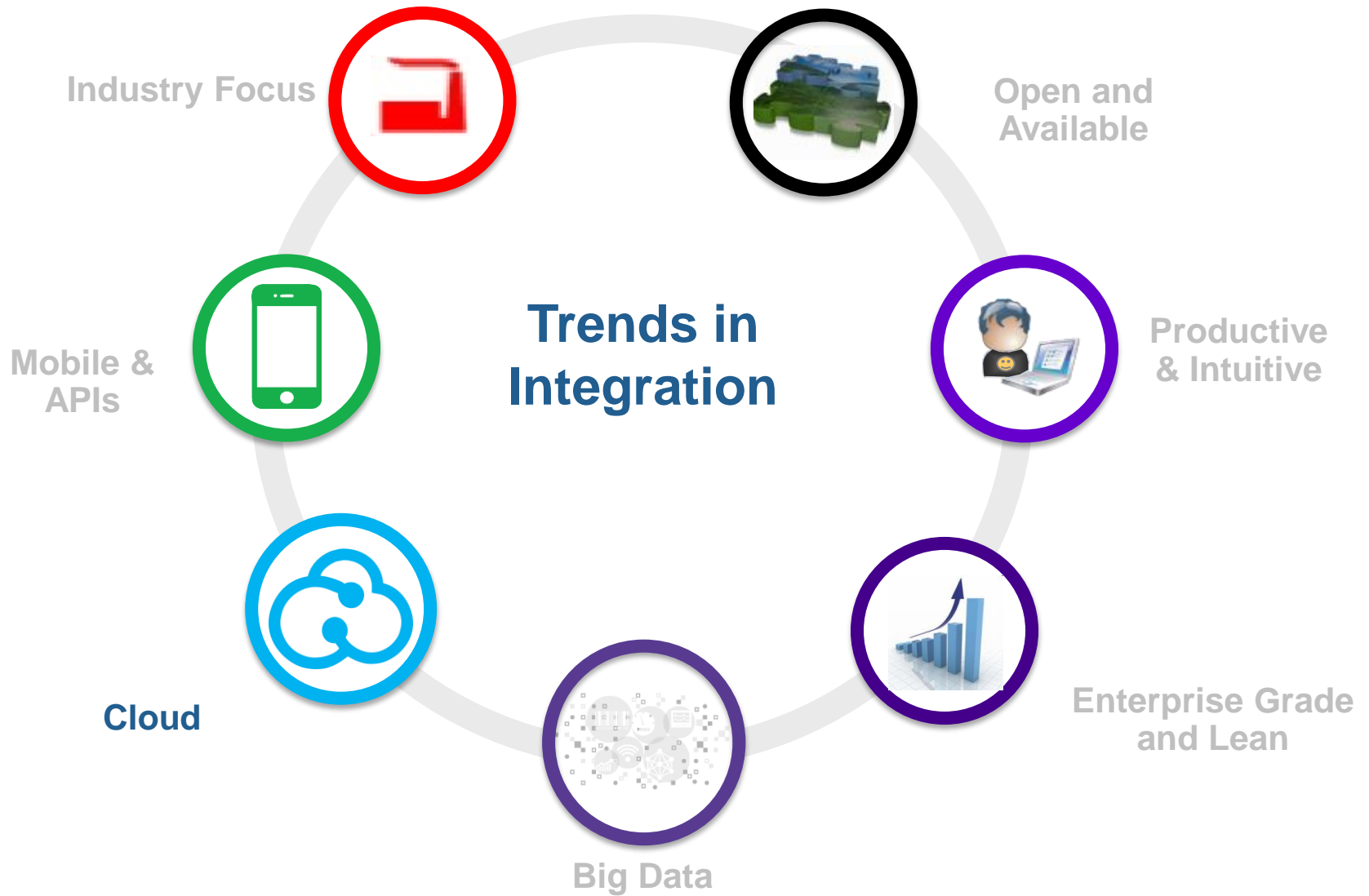


## GitHub



## Open Technologies for Integration

<http://ot4i.github.io>



## Cloud is changing the game



Cloud

**62%**

of total workloads in  
the cloud by 2016

**75%**

of users act on  
location-based offers

**85%**

Of businesses use at  
least one external  
SaaS application

**545**

Average number of  
cloud services in use



# What Do We Mean by Cloud Computing?

## ▪ Infrastructure as a Service (IaaS)

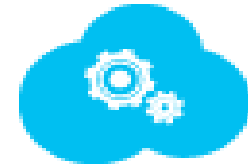
- The most basic layer. Equivalent to logical hardware layer.
- Access to compute, storage, network resources
- Charging generally by (virtual) machine capacity
- Examples: VMWare, KVM, EC2, OpenStack, Rackspace, TerraMark,...
- Many organizations have some experience with these technologies
- Total flexibility: can build and deploy VM to run any application



IaaS

## ▪ Platform as a Service (PaaS)

- Application Centric view. Equivalent to operating system for Cloud.
- Application deployed into this environment hosted in the cloud
- Simplifies application dependency & provisioning, e.g. databases, messaging
- Often charged by licensed capacity or by usage
- Examples: Cloud Foundry, Heroku, OpenShift, Force.com...
- Developers are trying out these platforms today, adoption growing



PaaS

## ▪ Software as a Service (SaaS)

- Provides access to hosted applications or services
- Trades off flexibility in favour of ease of use for users with less middleware experience
- Usage based charging, per hour or per 'transaction'
- Examples Salesforce, Office 365, GoogleApps...
- Particular applications are very popular



SaaS

SaaS	Software as a Service "Business Apps"
PaaS	Platform as a Service OS and Middleware
IaaS	Infrastructure as a Service Hardware: servers, disks, network...

# IaaS: Install/Configuration automation

- Full IBM support on popular public IaaS options such as Softlayer and Amazon
- Subscription / Rental pricing
- Chef
  - Open Source technology focussing on managing middleware install/config
  - Bring your own hardware or Cloud provider such as SoftLayer
  - Chef Cookbook for IBM Integration Bus v9 published on github
  - Installs IIB and MQ, creates queue managers and integration nodes
  - Recipes follow best practices including performance tuning
- IBM UrbanCode Deploy plugins
  - Orchestrates and automates the deployment of applications, middleware configurations, and database changes into development, test, and production environments

**SOFTLAYER**<sup>®</sup>  
an IBM Company

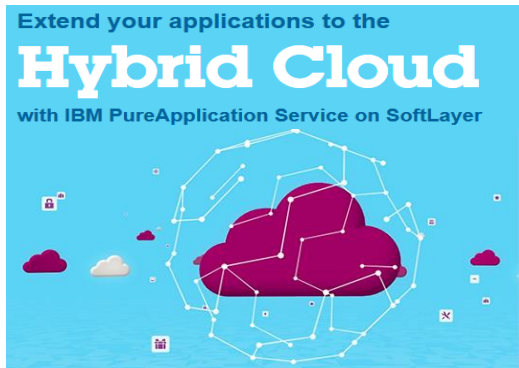


**urban{code}**

An IBM company

# PaaS: IBM Hosted Environments

- IBM PureApplication Service on Softlayer
  - Fully integrated, managed hardware platform, hosted on **IBM SoftLayer**
  - Subscription / Rental Pricing
  - Automated provisioning of machines as well as deployment of middleware via IBM Patterns
  - **IIB & MQ Patterns** for PureApplication Service available on IBM Cloud Marketplace



IBM Cloud

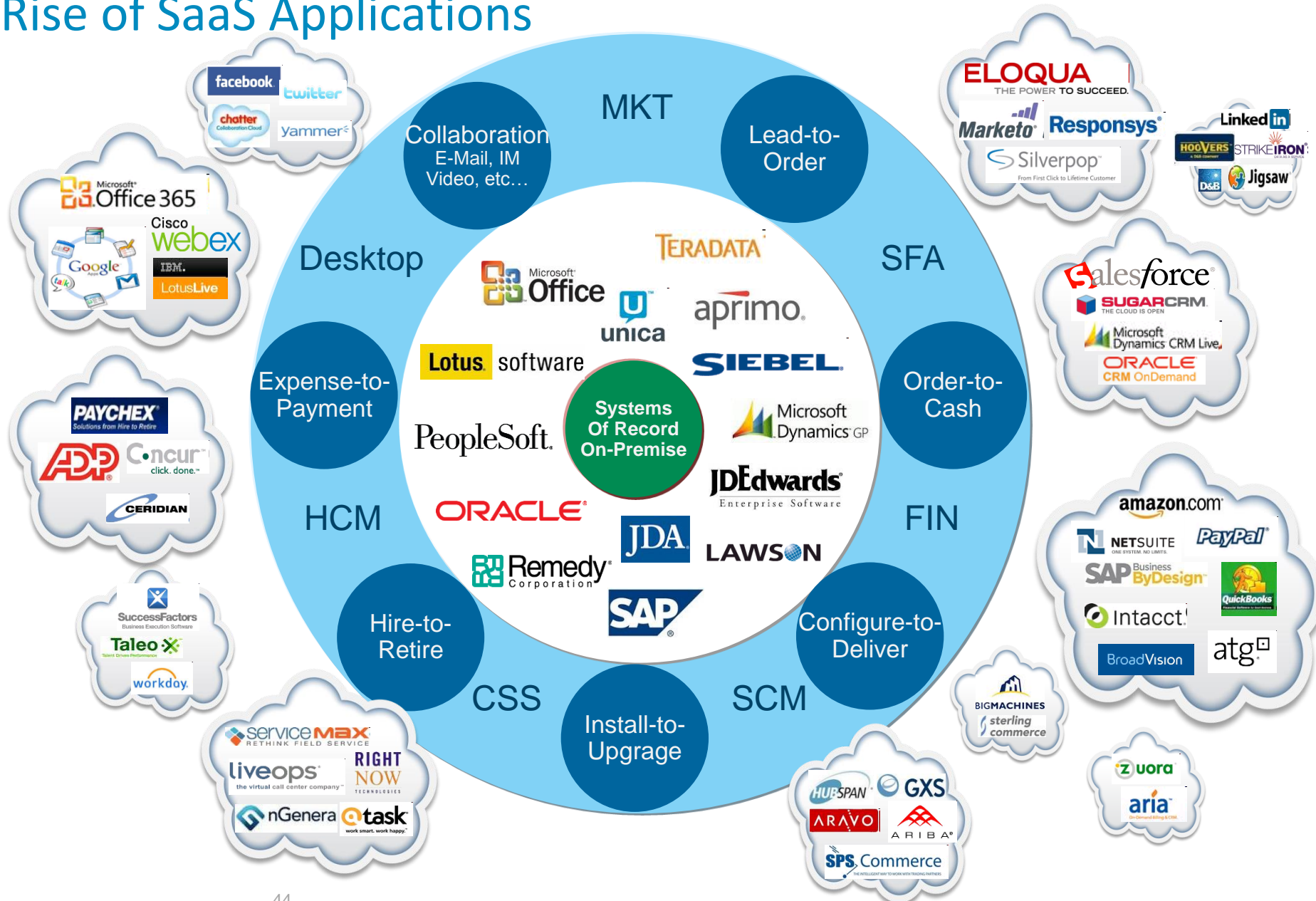
## Integration patterns

Use prebuilt patterns and tooling to accelerate any-to-any integration creation and deployment

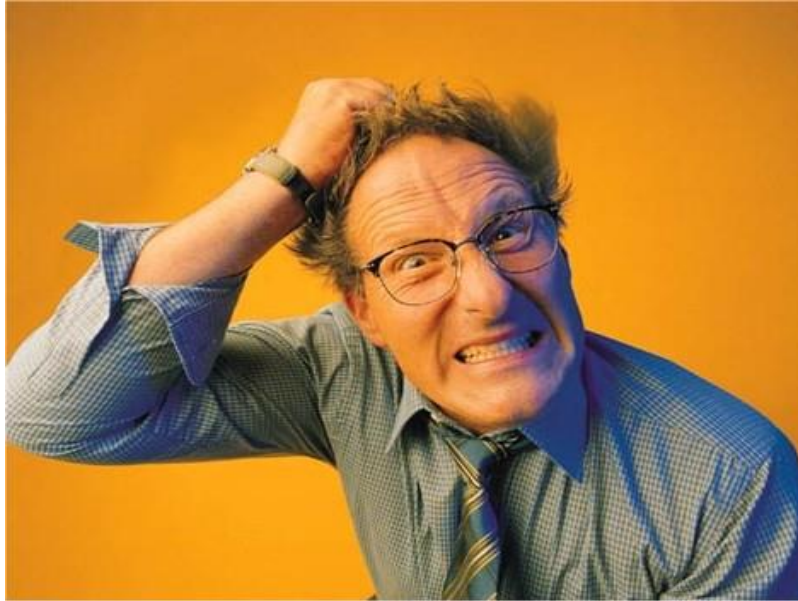


- IBM CastIron Live
  - Multi-tenant, cloud-based platform for integrating cloud and on-premise applications and enterprise systems in a hybrid environment.
  - Rapidly connects your cloud applications without writing a single line of code

# Rise of SaaS Applications



# SaaS App Integration Introduces New Requirements

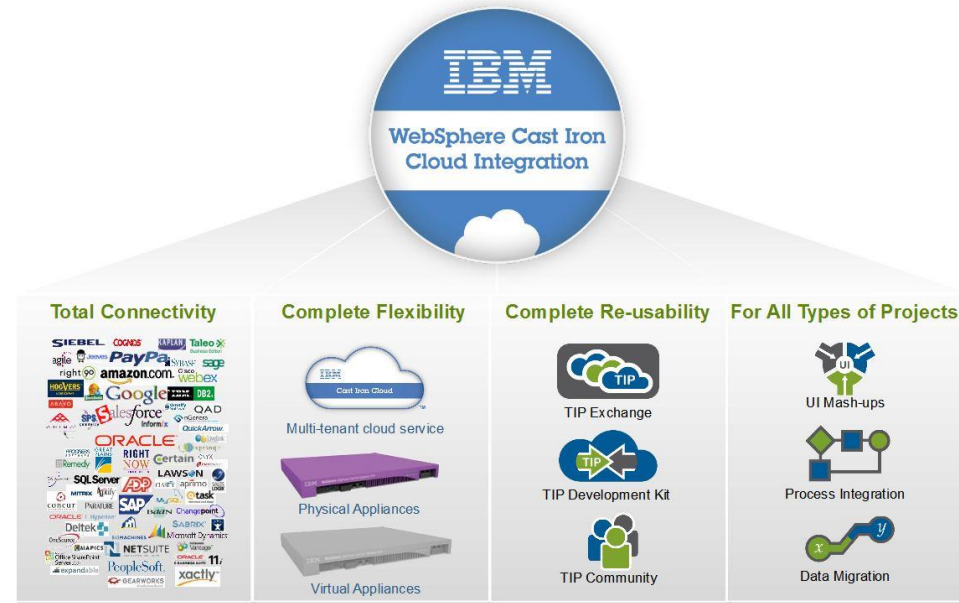


- Enabling data load and data synch of SaaS applications
- Session Management
- Masking sensitive data passed to cloud end points
- Security
- Managing data quality from cloud end points
- Exposing enterprise assets as API's for use by application developers



# Rapid Integration with the Cloud

- IBM WebSphere Cast Iron V7.0 provides an approach to integrating applications that does not require any programming knowledge.
- Integration flows are built in Cast Iron Studio (a graphical development environment that is installed to a PC).
- There are two main ways Cast Iron can be implemented:
  - An appliance model where the appliance can be either physical hardware or a virtual machine, and where the Integration Appliance is installed on-premise, behind the firewall.
  - As a **PaaS** model (Cast Iron Live)
- Both implementations (form factors) allow for cloud-to-cloud, cloud-to-on premise, and on premise-to-on premise integration.

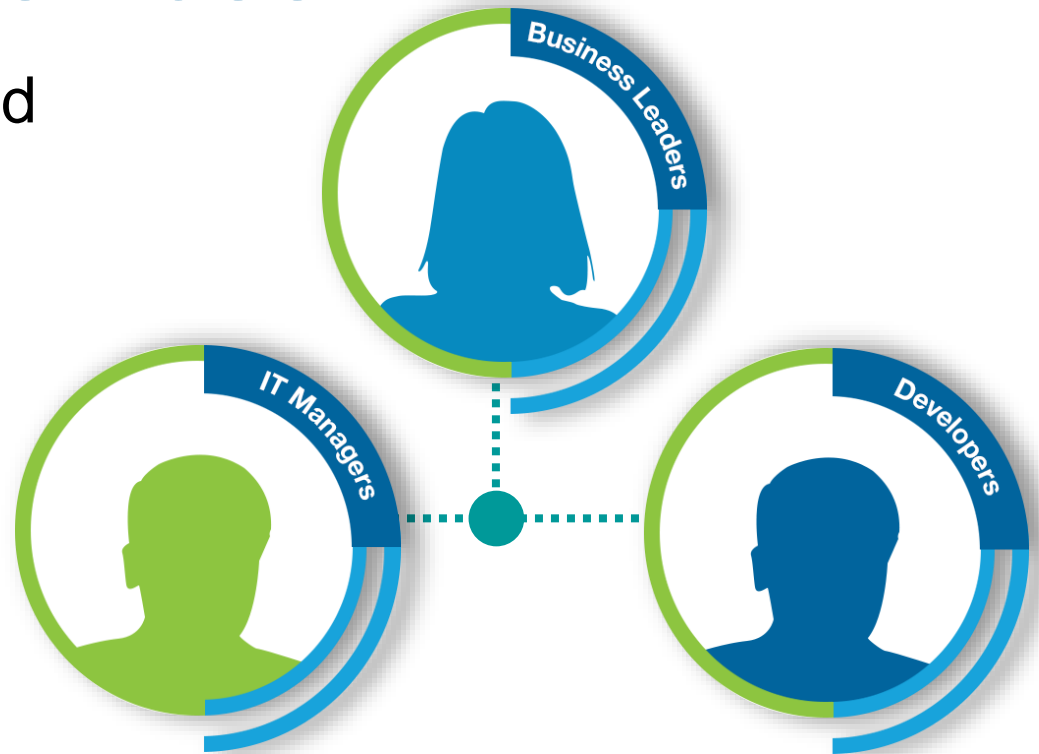


**Highlight:** Currently, \$1 of every \$3 of companies' IT spending goes toward integration projects. Cast Iron's configuration-based approach can help companies **reduce integration costs by up to 80%** compared to the costs of customer code writing.

**Highlight:** With hundreds of reusable templates and prepackaged integration processes, the need to build custom-coded integrations from scratch is eliminated, reducing time for data integration and migration **from months to days**.

# The Future is a Composable Business

- Restless reinvention and process innovation
- Better decision making from actionable insight
- Speed to market





Available  
now!

# Manage your APIs in the Cloud

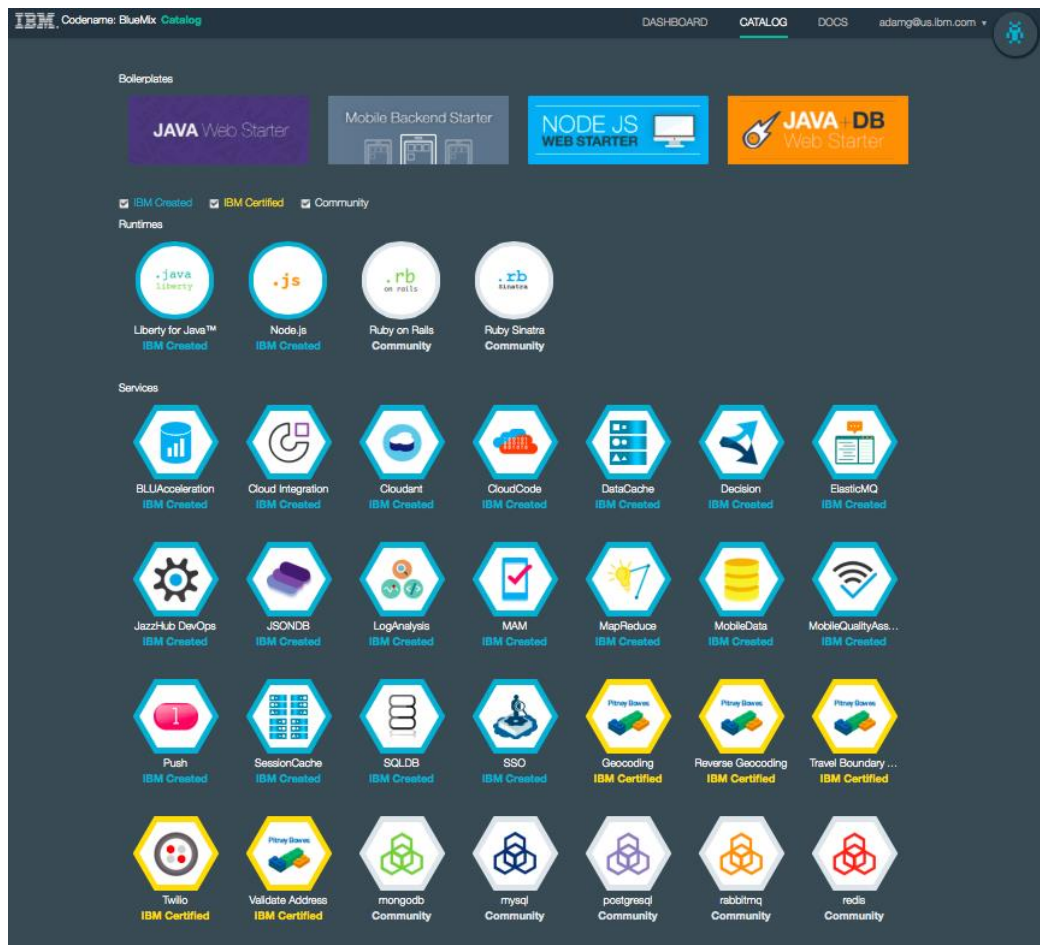
## *IBM API Management Service (SaaS)*

- All capabilities of on-prem offered as SaaS
- Self service, Try & Buy, credit card payment
- Monthly billing, Annual subscription
- Pricing based on number of API calls & developer accounts, and optional logging of API payload
- Assisted selling for large customers & volume buyers
- Hosted on IBM SoftLayer Cloud



# Introducing IBM BlueMix

Delivering a Composable Services development environment



## Run Your Apps

The developer can choose any language runtime or bring their own. Just upload your code and go.

## DevOps

Development, monitoring, deployment and logging tools allow the developer to run the entire application

## APIs and Services

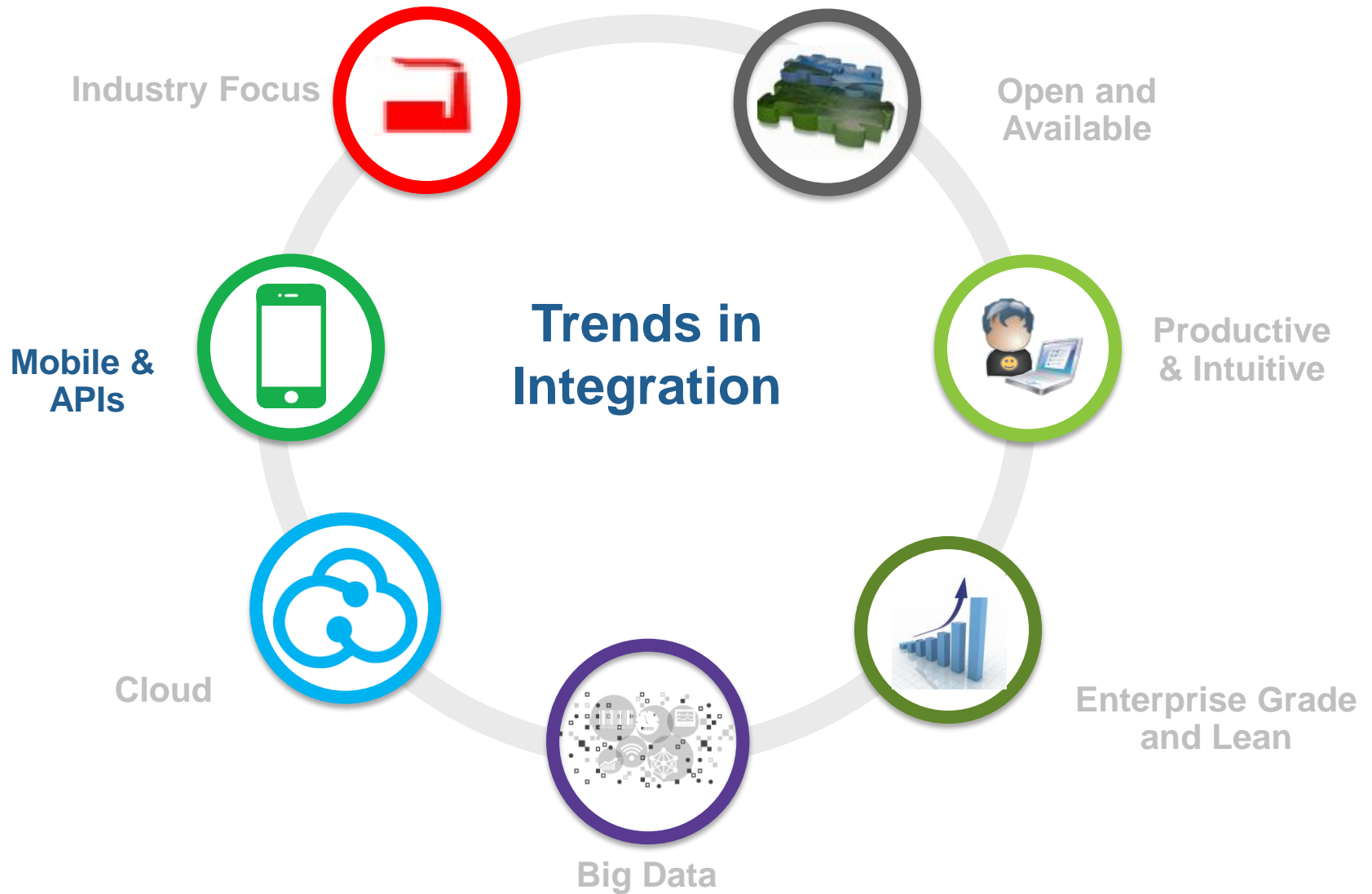
A catalog of open source, IBM and third party APIs services allow a developer to stitch together an application in minutes.

## Cloud Integration

Build hybrid environments. Connect to on-premises systems of record plus other public and private clouds. Expose your own APIs to your developers.

## Built on IBM SoftLayer

Runs automatically on top of IBM's leading infrastructure as a service. No need to worry about provisioning or managing infrastructure.



# Why enterprises are putting Mobile First



Mobile

**1B**

Smartphone  
users by 2016

**91%**

always keep mobile  
at arms reach

**\$534b**

Mobile transactions  
by 2015

**75%**

of users act on  
location-based offers

**11,000**

APIs on the  
Programmable Web

**95%**

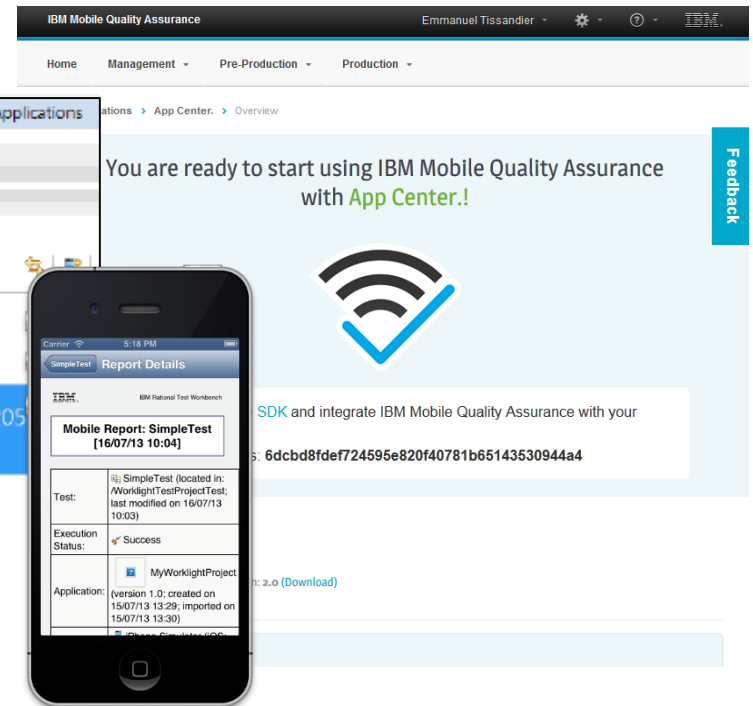
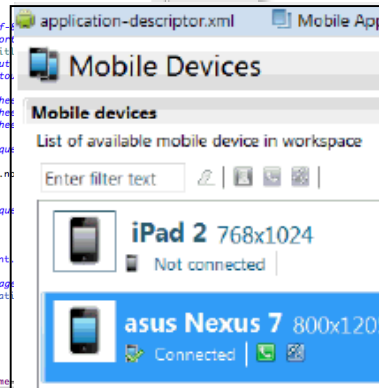
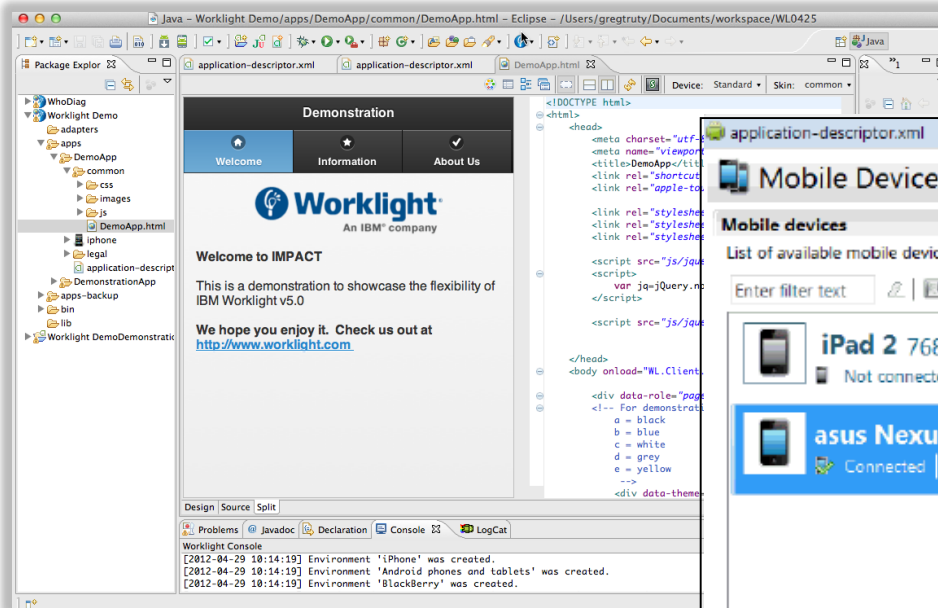
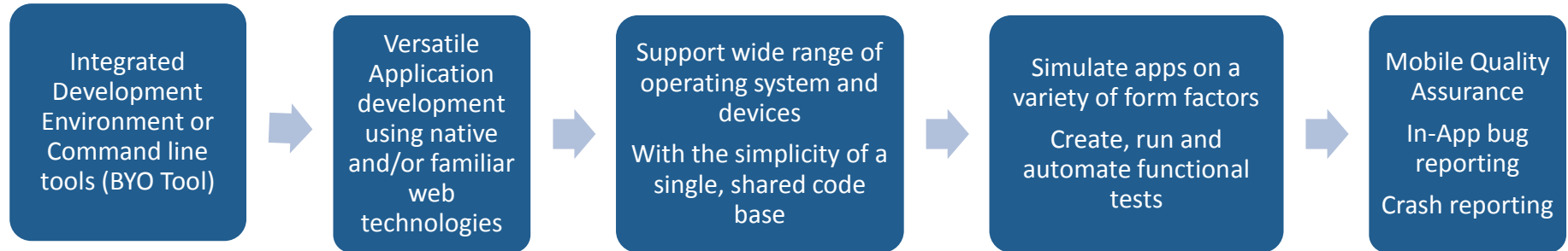
of Mobile traffic is  
data by 2015

Or just consider the 2 recent Papal inaugurations...



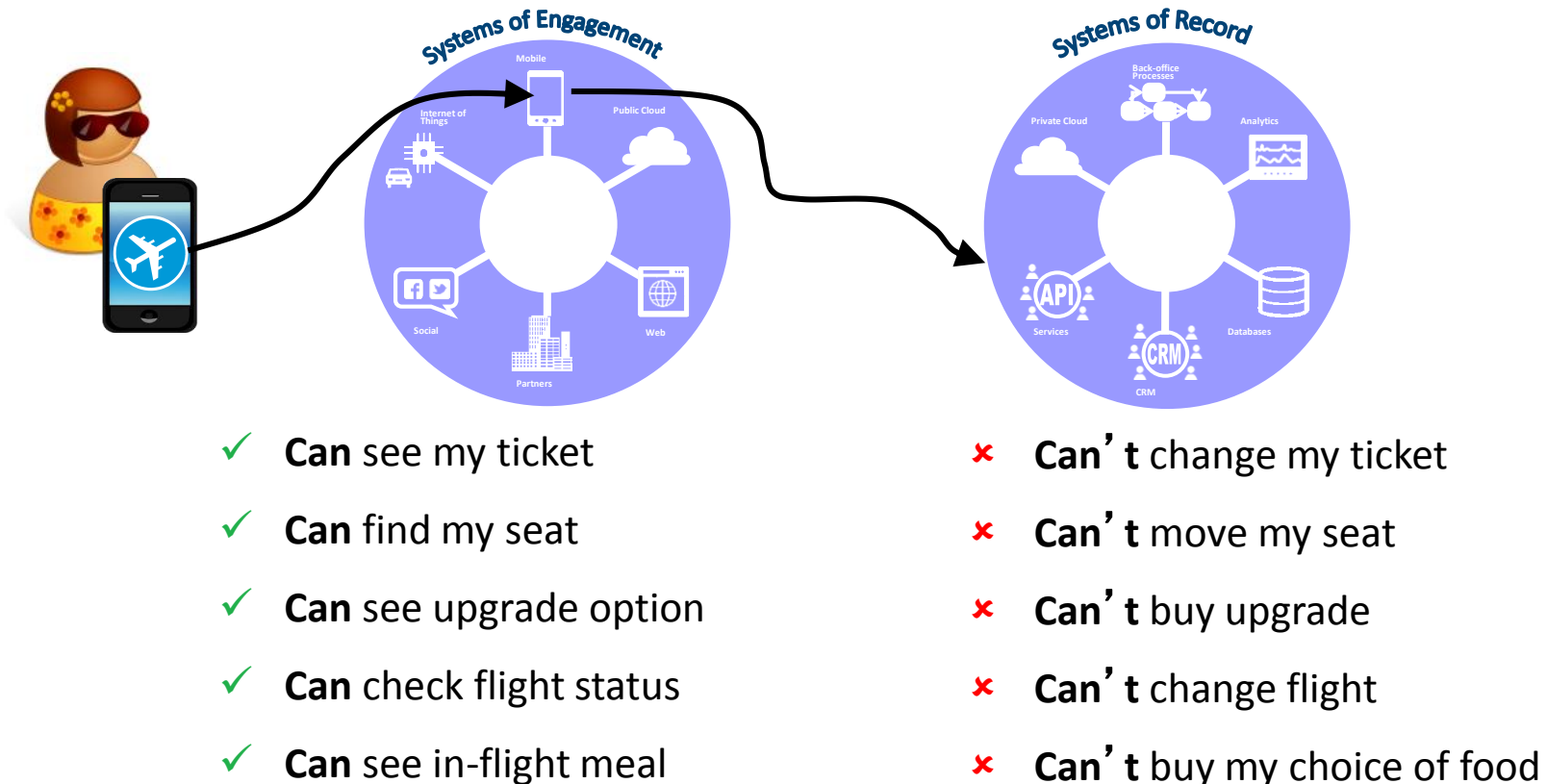


# IBM Worklight accelerates web, native and Hybrid development



# Un-integrated Mobile apps are not Engaging

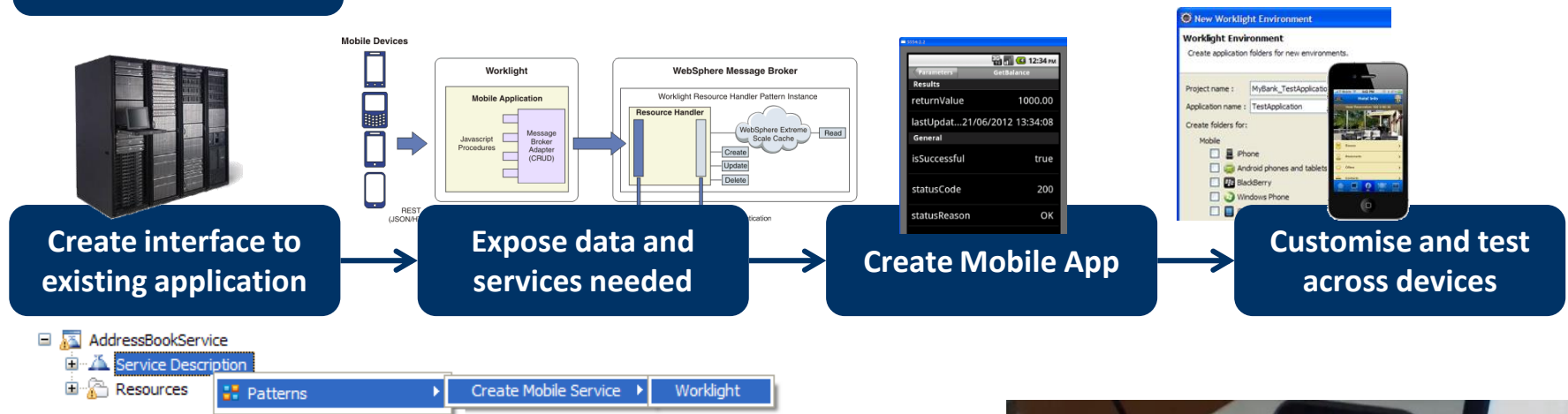
**Example: Customer uses Mobile app to interact with Airline**





## Integrated engaging Mobile apps

# Mobile in 10 minutes



- **Easy**

- Drag and drop application and enter Worklight adapter details

- **Rapid**

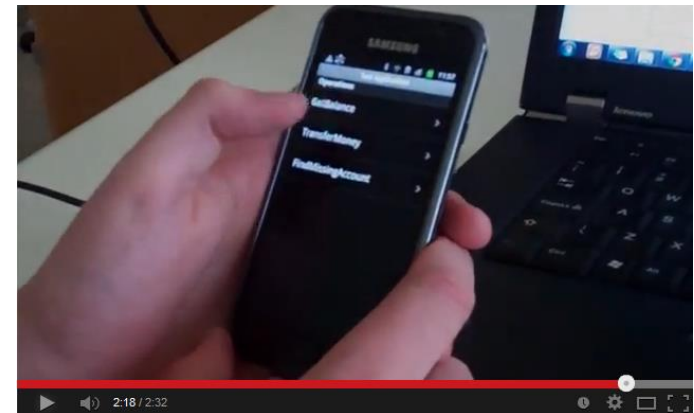
- Pattern does all the hard work in less than a minute
- Generates Web service exposing desired operations

- **Easy to test**

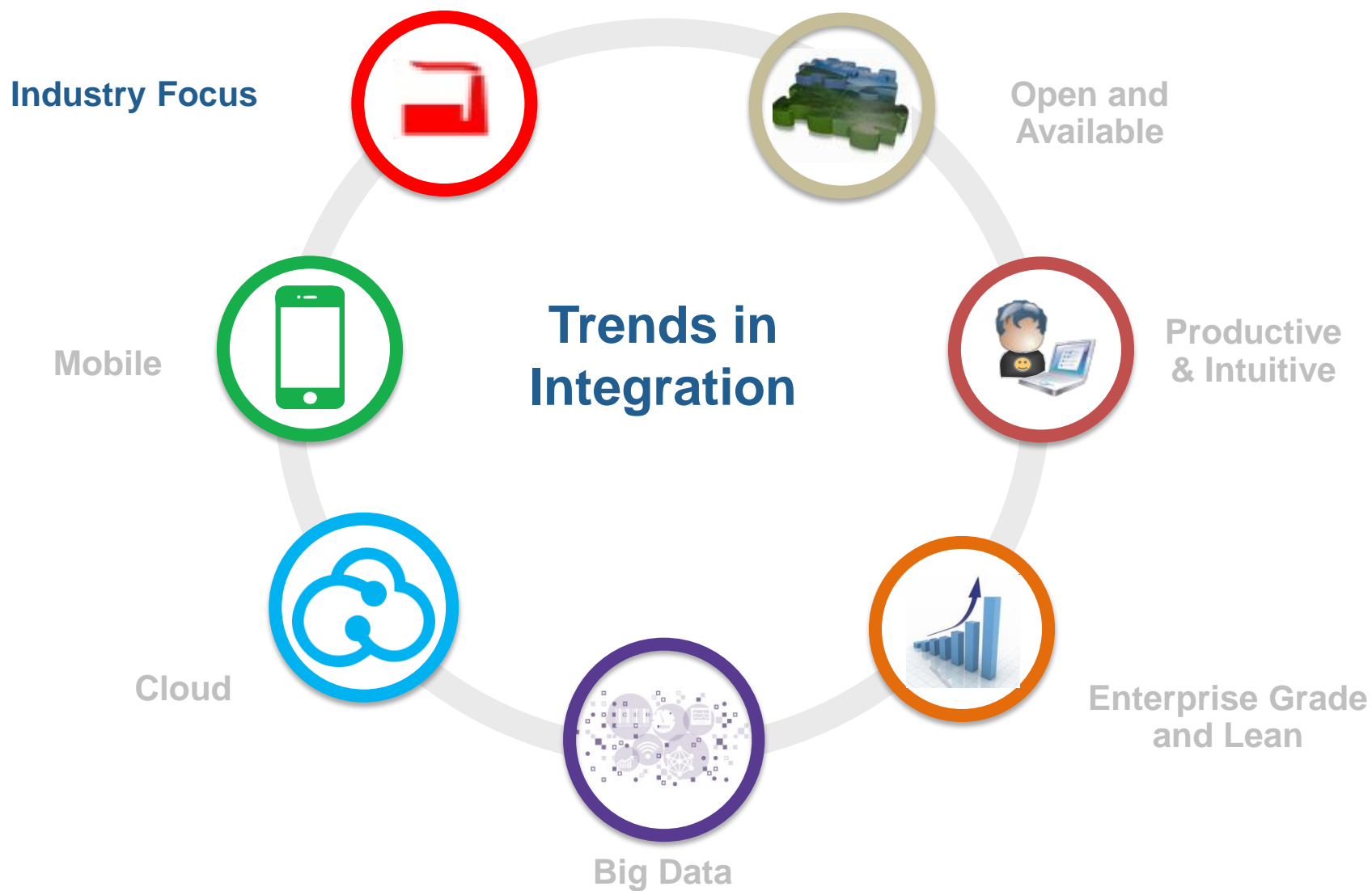
- Generates sample mobile application
- Optimised for small screen mobile devices
- Easy to add extra environments for iOS, Android and many more!

- **Ready to run**

- Generates adapter ready for deployment to Worklight Server



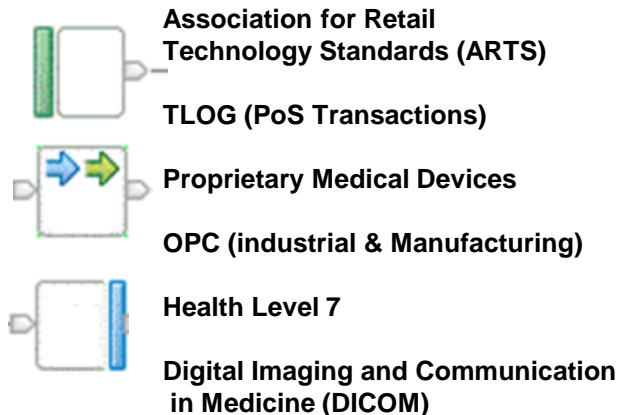
<http://youtu.be/xE3EcDdA-RE>



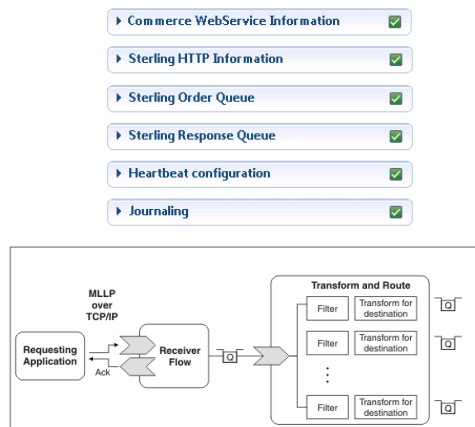
# What are IBM Integration Industry Packs?

- Each pack is a separately purchased, fully supported software product, built on IBM Integration Bus
- Provide industry-specific development accelerators for common industry integration problems
- Help users to deploy working integration solutions in *literally* a few clicks of the mouse.
- Provide industry specific pricing e.g store, factory and hospital per bed deployments
- IIB Industry Pack content is structured around three delivery pillars:

## Industry Connectors & data formats



## Integration Patterns



## Domain specific Operational Views



# Industry packs for Healthcare, Retail and Manufacturing

## Healthcare Pack v3.0

- Support for Continua based remote patient monitoring solutions
- Integrates HL7 v2.x based clinical repositories & applications
- Integrates DICOM based PACS & modalities
- Processes CDA/CCD documents
- Direct connectivity to medical equipment - monitors, infusion pumps

## Retail Pack v1.0

- Integrates PoS terminals
- Processes Point of sale transaction data in TLOG and PoSLog formats.
- Integrates WebSphere Commerce eCommerce engine and Sterling DOMS Order Management
- Provides Web based view of point of sales transaction data

## Manufacturing Pack v1.0

SoD – April 22 2014 (Impact)

Announce – 5 May 2014

- Connects and integrates plant floor and industrial machinery utilizing OPC (classic) industry standard
- Direct support for vendor specific implementation of OISSoft PI Server
- Integrates plant and enterprise applications which support OPC UA standards
- Web-based interface to provide operational views of data published from plant and machinery





# Thank You

## Legal Disclaimer

- © IBM Corporation 2014. All Rights Reserved.
- The information contained in this publication is provided for informational purposes only. While efforts were made to verify the completeness and accuracy of the information contained in this publication, it is provided AS IS without warranty of any kind, express or implied. In addition, this information is based on IBM's current product plans and strategy, which are subject to change by IBM without notice. IBM shall not be responsible for any damages arising out of the use of, or otherwise related to, this publication or any other materials. Nothing contained in this publication is intended to, nor shall have the effect of, creating any warranties or representations from IBM or its suppliers or licensors, or altering the terms and conditions of the applicable license agreement governing the use of IBM software.
- References in this presentation to IBM products, programs, or services do not imply that they will be available in all countries in which IBM operates. Product release dates and/or capabilities referenced in this presentation may change at any time at IBM's sole discretion based on market opportunities or other factors, and are not intended to be a commitment to future product or feature availability in any way. Nothing contained in these materials is intended to, nor shall have the effect of, stating or implying that any activities undertaken by you will result in any specific sales, revenue growth or other results.
- If the text contains performance statistics or references to benchmarks, insert the following language; otherwise delete:  
Performance is based on measurements and projections using standard IBM benchmarks in a controlled environment. The actual throughput or performance that any user will experience will vary depending upon many factors, including considerations such as the amount of multiprogramming in the user's job stream, the I/O configuration, the storage configuration, and the workload processed. Therefore, no assurance can be given that an individual user will achieve results similar to those stated here.
- If the text includes any customer examples, please confirm we have prior written approval from such customer and insert the following language; otherwise delete:  
All customer examples described are presented as illustrations of how those customers have used IBM products and the results they may have achieved. Actual environmental costs and performance characteristics may vary by customer.
- Please review text for proper trademark attribution of IBM products. At first use, each product name must be the full name and include appropriate trademark symbols (e.g., IBM Lotus® Sametime® Unyte™). Subsequent references can drop "IBM" but should include the proper branding (e.g., Lotus Sametime Gateway, or WebSphere Application Server). Please refer to <http://www.ibm.com/legal/copytrade.shtml> for guidance on which trademarks require the ® or ™ symbol. Do not use abbreviations for IBM product names in your presentation. All product names must be used as adjectives rather than nouns. Please list all of the trademarks that you use in your presentation as follows; delete any not included in your presentation. IBM, the IBM logo, Lotus, Lotus Notes, Notes, Domino, Quickr, Sametime, WebSphere, UC2, PartnerWorld and Lotusphere are trademarks of International Business Machines Corporation in the United States, other countries, or both. Unyte is a trademark of WebDialogs, Inc., in the United States, other countries, or both.
- If you reference Adobe® in the text, please mark the first use and include the following; otherwise delete:  
Adobe, the Adobe logo, PostScript, and the PostScript logo are either registered trademarks or trademarks of Adobe Systems Incorporated in the United States, and/or other countries.
- If you reference Java™ in the text, please mark the first use and include the following; otherwise delete:  
Java and all Java-based trademarks are trademarks of Sun Microsystems, Inc. in the United States, other countries, or both.
- If you reference Microsoft® and/or Windows® in the text, please mark the first use and include the following, as applicable; otherwise delete:  
Microsoft and Windows are trademarks of Microsoft Corporation in the United States, other countries, or both.
- If you reference Intel® and/or any of the following Intel products in the text, please mark the first use and include those that you use as follows; otherwise delete:  
Intel, Intel Centrino, Celeron, Intel Xeon, Intel SpeedStep, Itanium, and Pentium are trademarks or registered trademarks of Intel Corporation or its subsidiaries in the United States and other countries.
- If you reference UNIX® in the text, please mark the first use and include the following; otherwise delete:  
UNIX is a registered trademark of The Open Group in the United States and other countries.
- If you reference Linux® in your presentation, please mark the first use and include the following; otherwise delete:  
Linux is a registered trademark of Linus Torvalds in the United States, other countries, or both. Other company, product, or service names may be trademarks or service marks of others.
- If the text/graphics include screenshots, no actual IBM employee names may be used (even your own), if your screenshots include fictitious company names (e.g., Renovations, Zeta Bank, Acme) please update and insert the following; otherwise delete: All references to [insert fictitious company name] refer to a fictitious company and are used for illustration purposes only.