

Business Rules usage for BPM and Integration

Andrew Macdonald – macdonald@uk.ibm.com
Technical Sales – IBM Decision Management & BPM

Agenda

- **Overview of Business Rules**
- **When to use a tool's built in rules logic**
- **When to externalise the logic**
- **Demonstration - building a ODM decision service**
- **Demonstration – Calling the decision service from an IBM BPM process**
- **Summary**
- **Q & A**

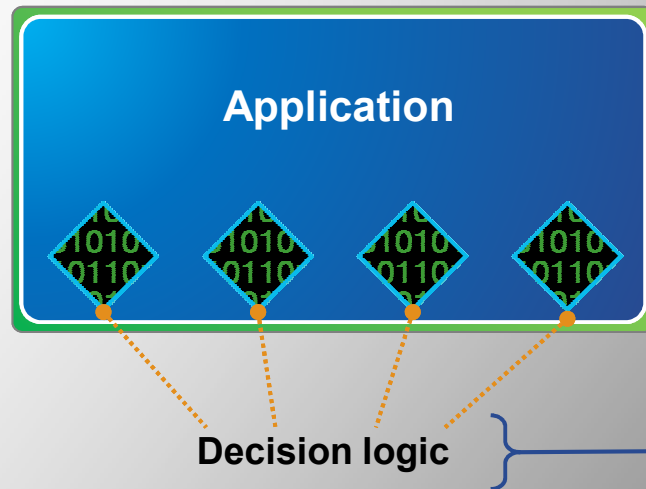
The background of the slide features a series of overlapping, wavy bands in various shades of blue, ranging from light sky blue to a deep navy blue. The waves flow from the top left towards the bottom right, creating a sense of movement and depth.

IBM Operational Decision Manager V8.5 Introduction

Externalising Decisions from Applications into Business Rules

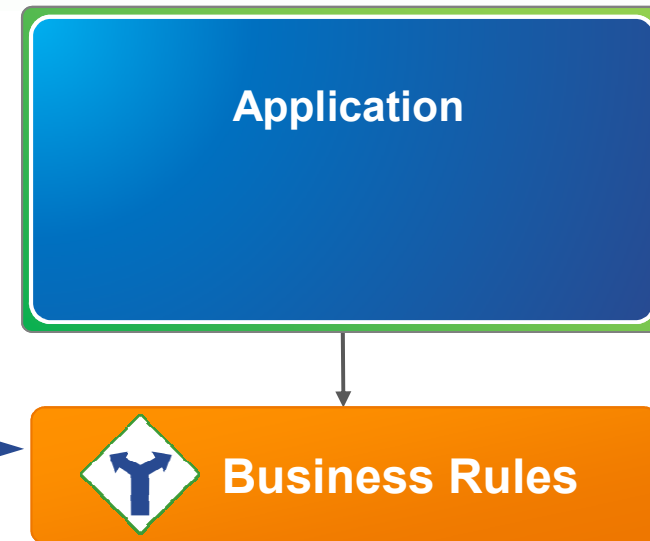
Manage decision logic independently from applications

Without Decision Management



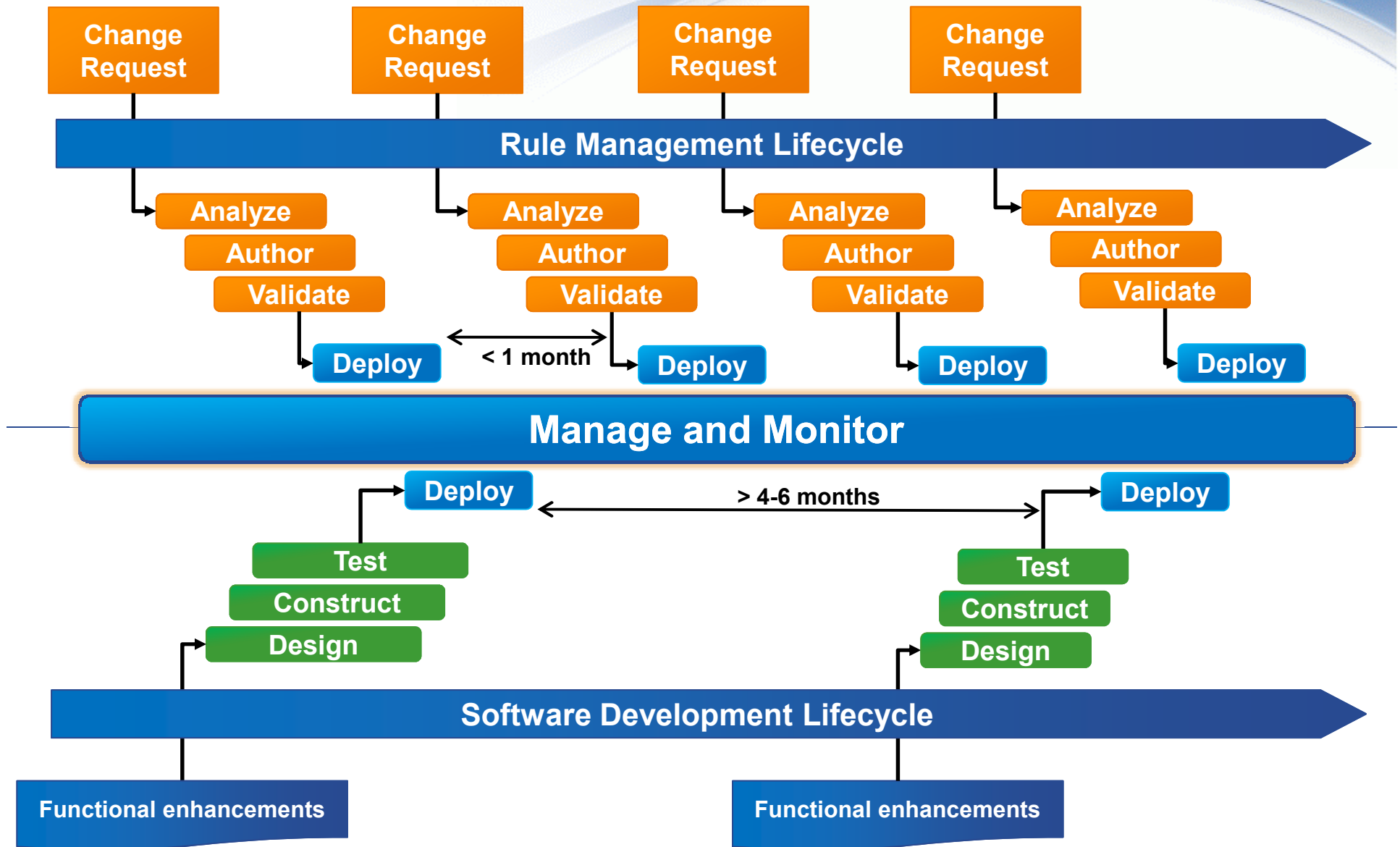
- Rules written in software code cannot be read by business people
- Hard coded rules are difficult to change
- Rules intertwined within applications cannot be reused by other systems

With Decision Management



- Natural language rules can be easily read
- Externalized rules are easy to change
- Centralized rules enable reuse and consistency

Decisions Need to Change Faster Than Software Applications



Benefits of using Business Rules

Agility

- Operationalise policy changes in days versus months
- Decrease cost of implementing business practices, policies & regulations

Efficiency and Productivity

- Improve straight-through-processing
- Involve business users for change requests with built-in governance

Decision Quality and Precision

- Implement more fine-grained, targeted decisions
- Perform what-if and impact analyses prior to deployment

Consistency

- Automate and consistently enforce decision policies
- Ensure policies and associated semantics are consistent across channels

Transparency, Auditability, Compliance

- Track what decisions were made and why (runtime)
- Track what policies were changed and by whom (rule management)

What is a business rule?

- Action Rules

if
 the age of 'the vehicle' is at most 3
then
 add a 15 % discount to 'the coverage quote' , reason: "New vehicle discount" ;

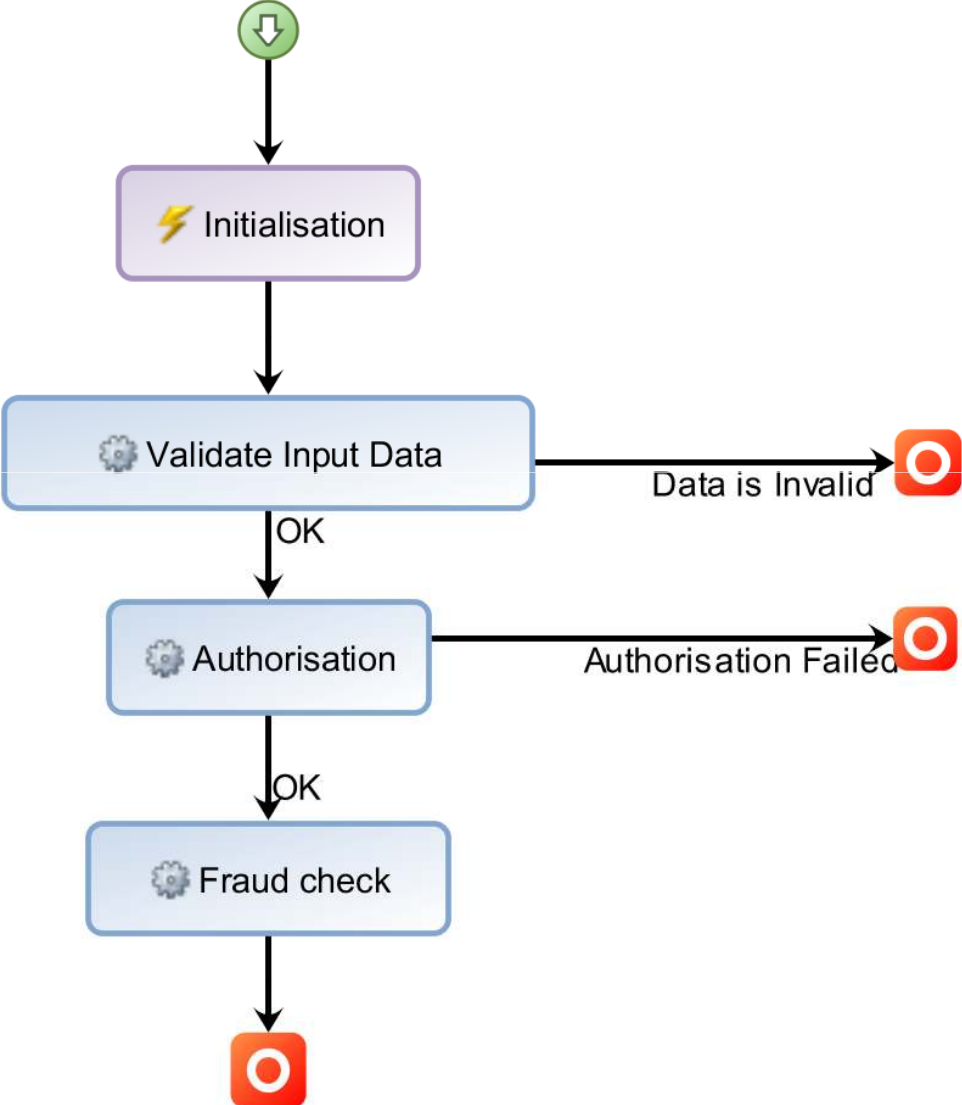
if
 the driver has completed drivers ed course
and the number of accidents the driver has been involved is 0
then
 add a 2 % discount to 'Auto Quote Response' , reason: "Good Driver Discount" ;

- Decision Table Rules

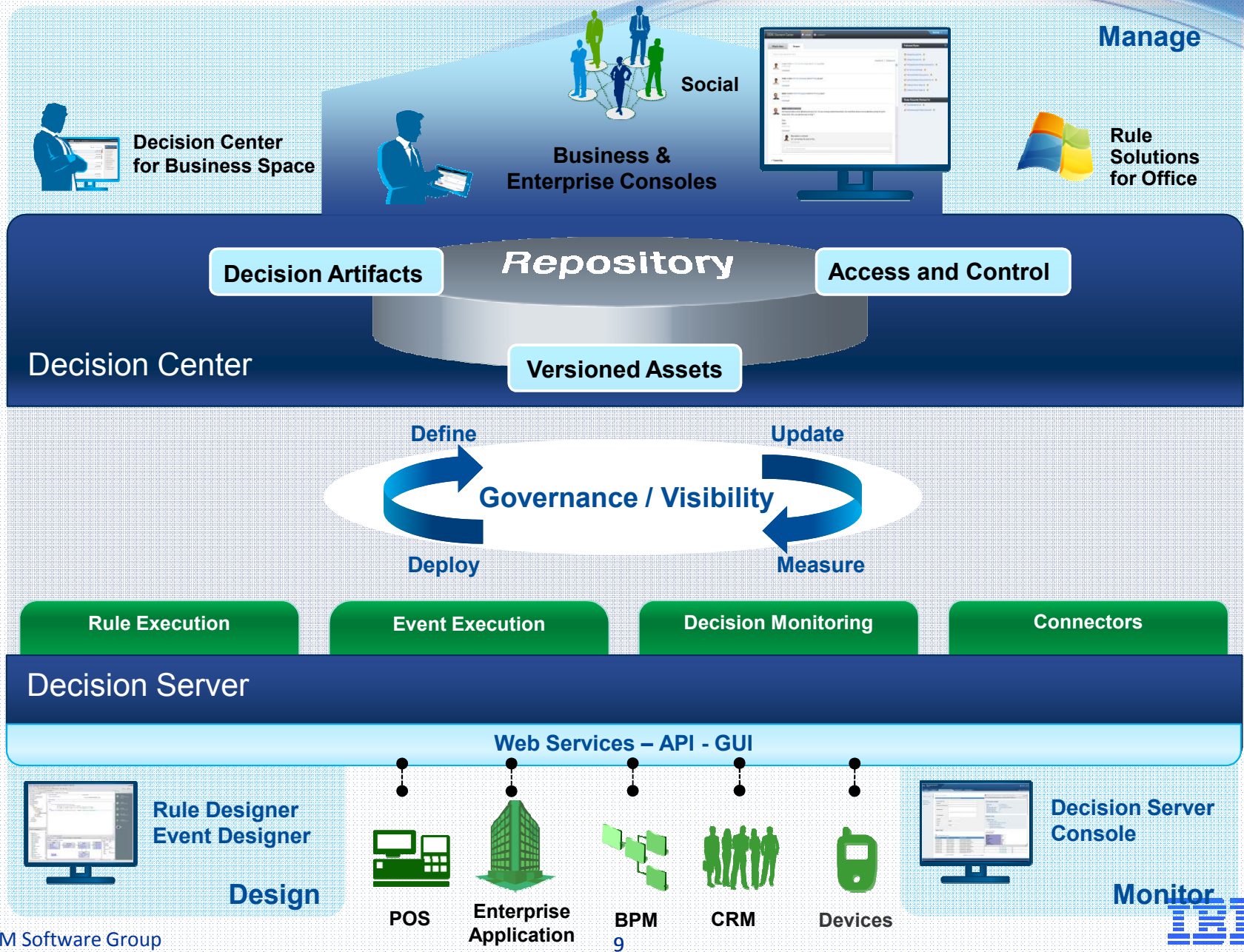
	Vehicle Value		Deductible	Base Premium
	Lower	Upper		
1			\$250	\$ 36
2	\$ 0	\$ 4,000	\$500	\$ 33
3			\$1000	\$ 23
4			\$250	\$ 43
5	\$ 4,000	\$ 10,000	\$500	\$ 39
6			\$1000	\$ 27
7			\$250	\$ 47
8	\$ 10,000	\$ 30,000	\$500	\$ 41
9			\$1000	\$ 32
10			\$250	\$ 52
11	\$ 30,000	\$ 60,000	\$500	\$ 49
12			\$1000	\$ 40
13			\$250	\$ 62
14	\$ 60,000	\$ 100,000	\$500	\$ 59
15			\$1000	\$ 48



Rule Orchestration - RuleFlow



IBM Operational Decision Manager

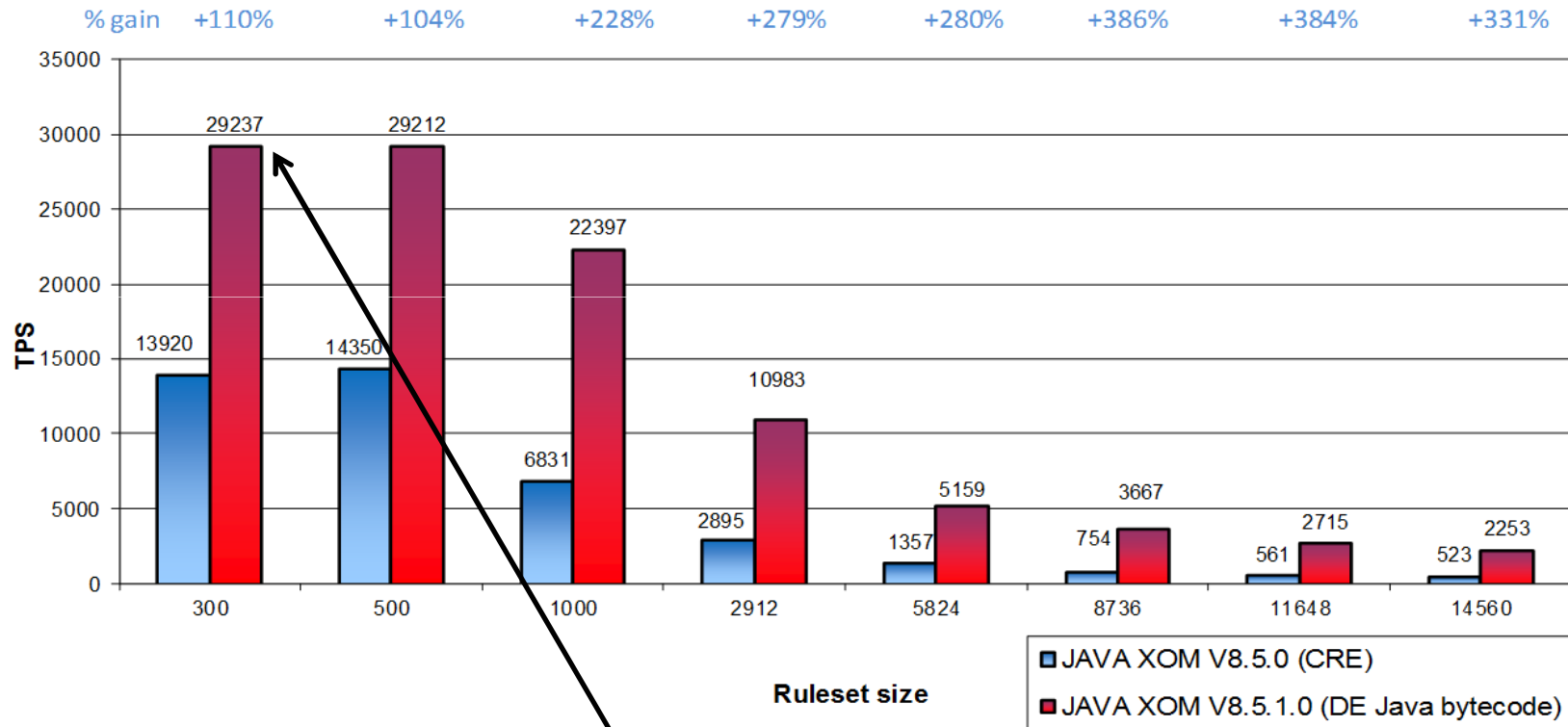


Drivers for implementing the Rules logic in ODM

- **When the business/policy owners need to be able to view or change the logic**
- **When the logic changes frequently**
- **When the rule logic is complex**
- **When you wish to reduce on-going maintenance costs**
- **When there are large numbers of rules**
- **When multiple versions of the logic are required for different date/time/regional/etc. criteria**
- **When the decision services are re-used across systems**
- **When you need to host multiple decision services together**

ODM 8.5.1 Fastest Performance

POJO RES Performance
Sequential execution on JAVA XOM
V8.5.0 Vs V8.5.1.0



8 x 70 PVU cores => ~ 3,654 executions per second per core

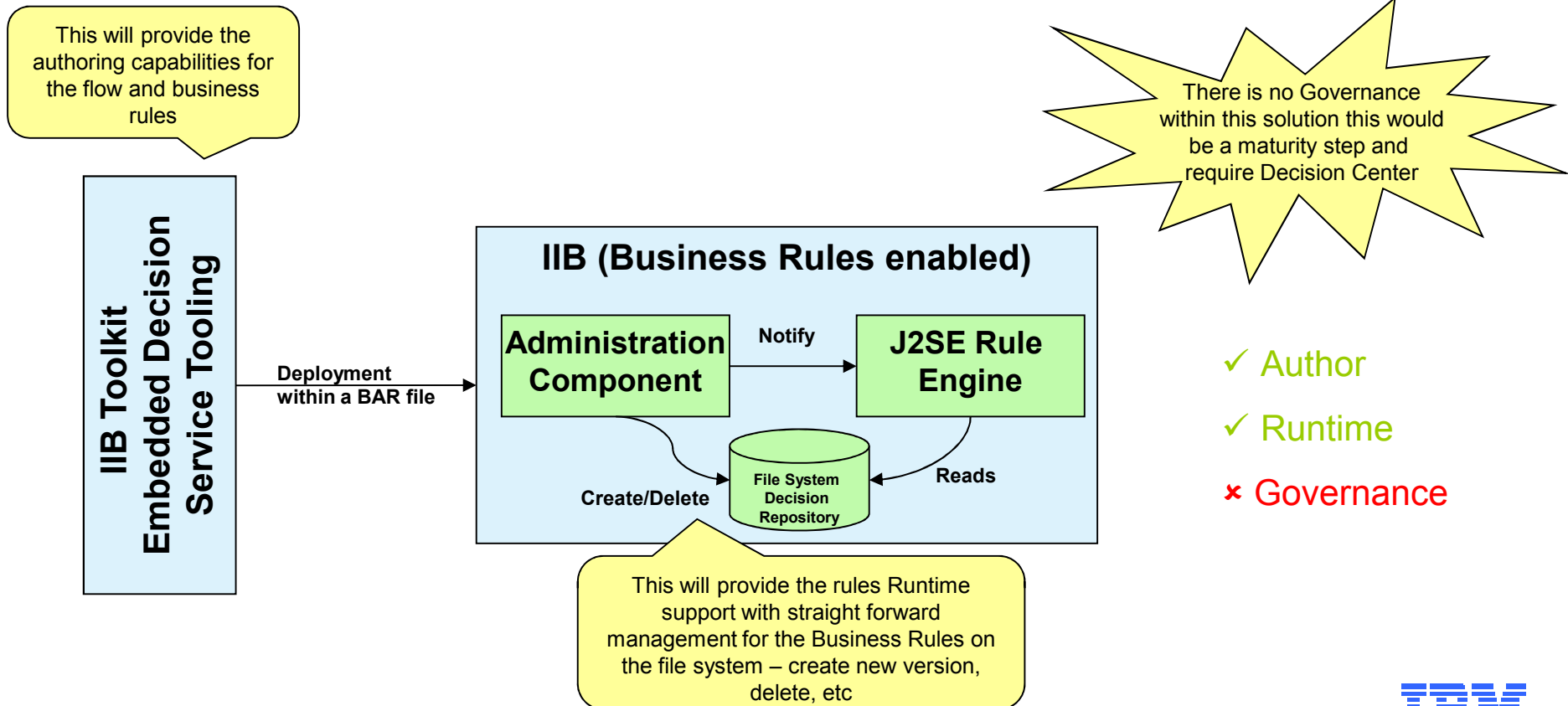
The background of the slide is a solid blue color with several overlapping, wavy, semi-transparent bands of varying shades of blue, creating a sense of motion and depth. The text is centered horizontally and vertically.

ODM and IBM Integration Bus (IIB 9)

First Time user of decisions with Broker

Existing Broker customer, new ODM customer

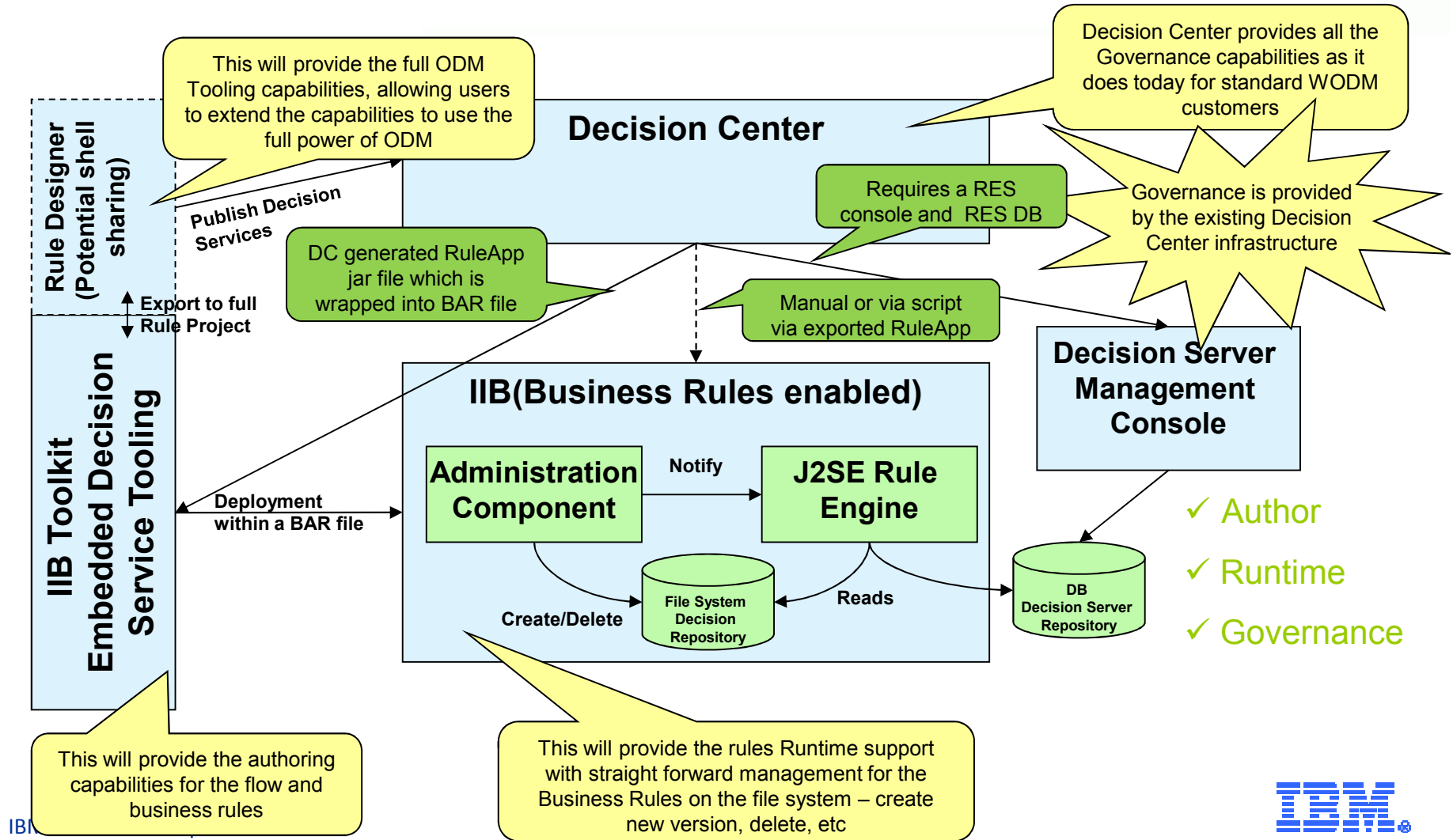
- We want to provide an out of the box experience where they only need to install IIB and its tooling to get started
- As the user grows their experience and requirements, Decision Center and Decision Server will provide these capabilities. We need to ensure there is a straight forward maturity flow.



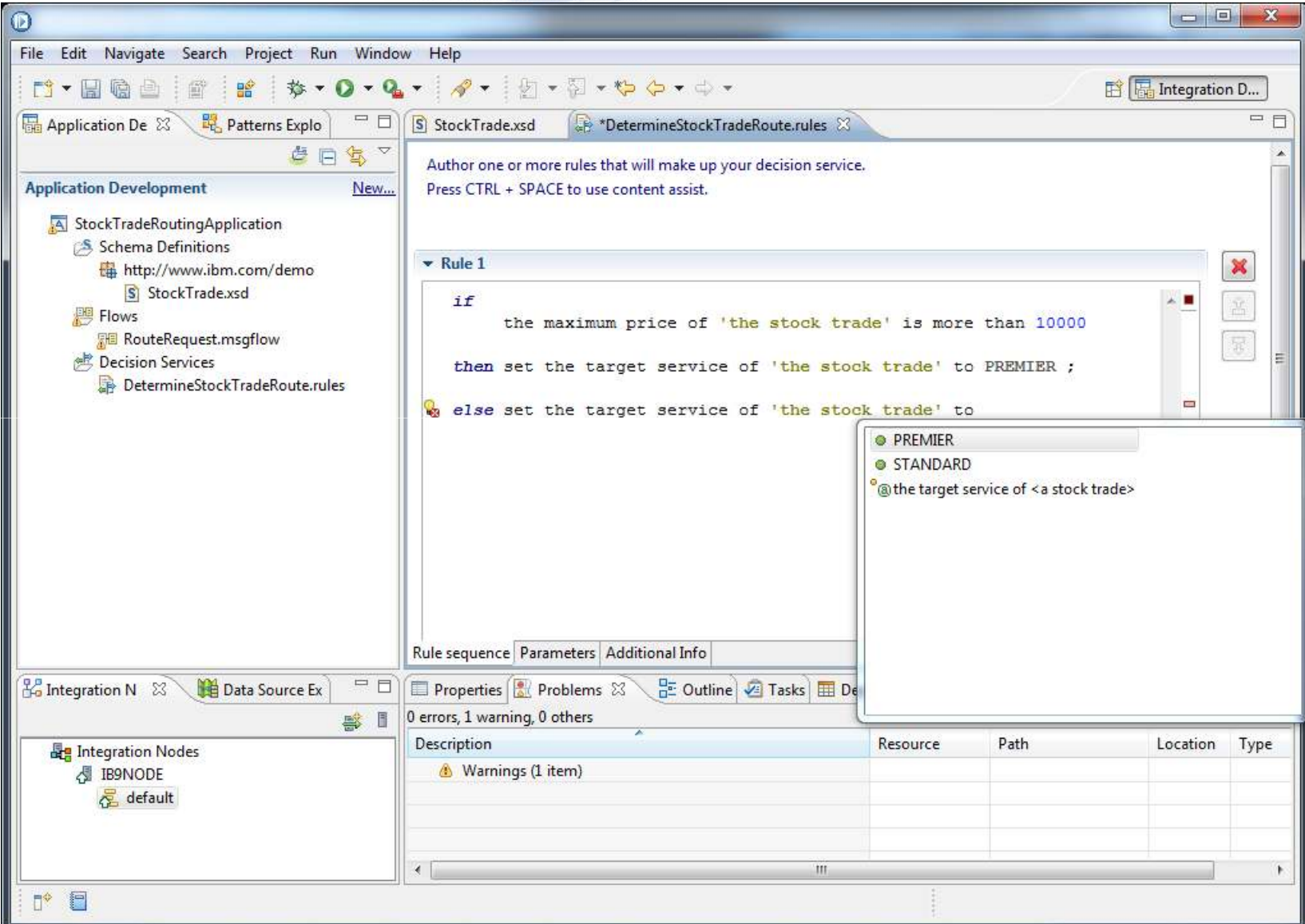
Maturing First Time user of rules with Broker

Existing ODM and Broker

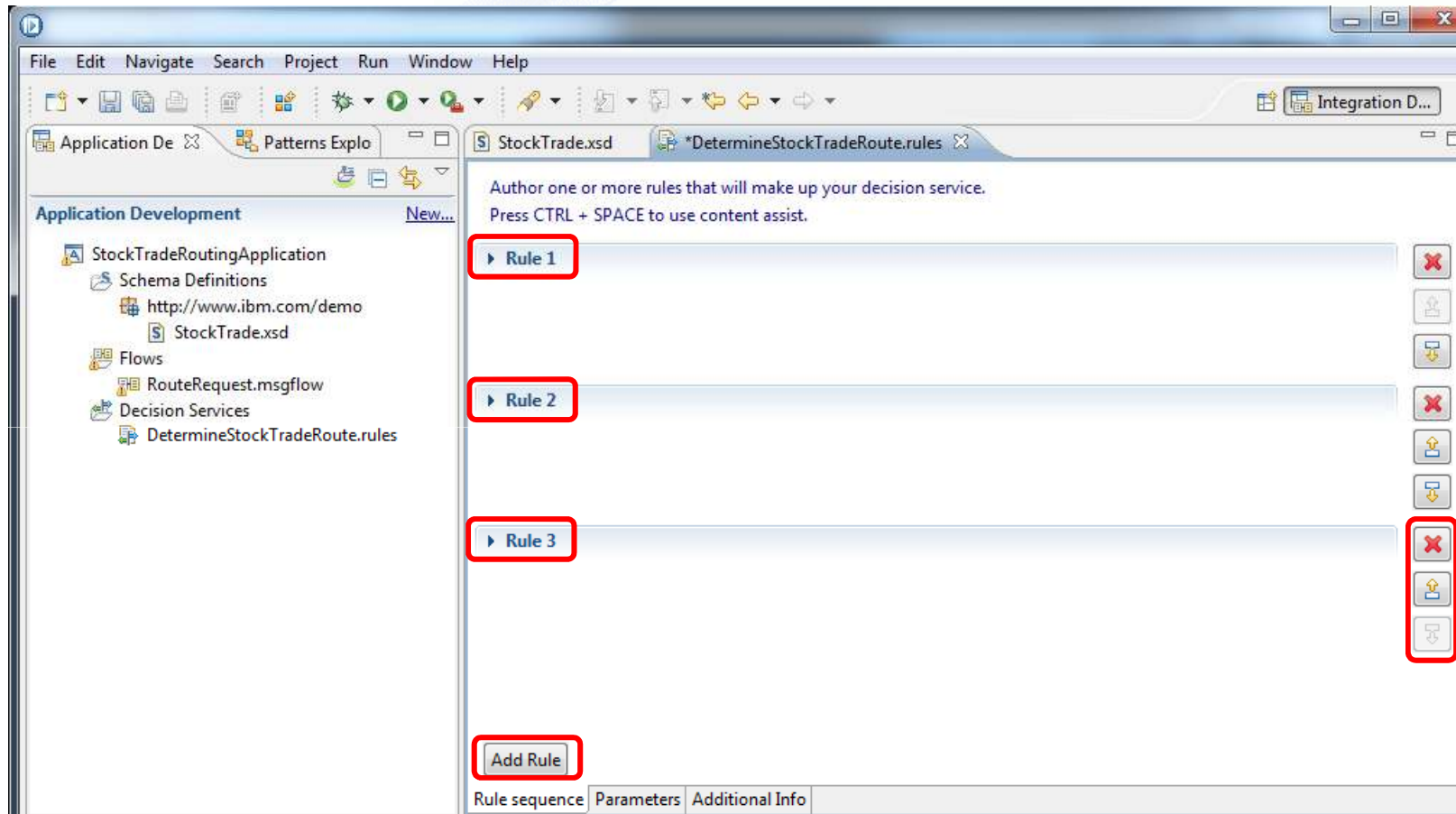
- As the users usage starts to mature they want to allow Business Users the ability to manage these decisions. This will introduce Decision Center as the Governance repository into the solution and the ability to use Rule Designer to enhance the Rules with the full array of functionality.



Content assisted editor to author business rules



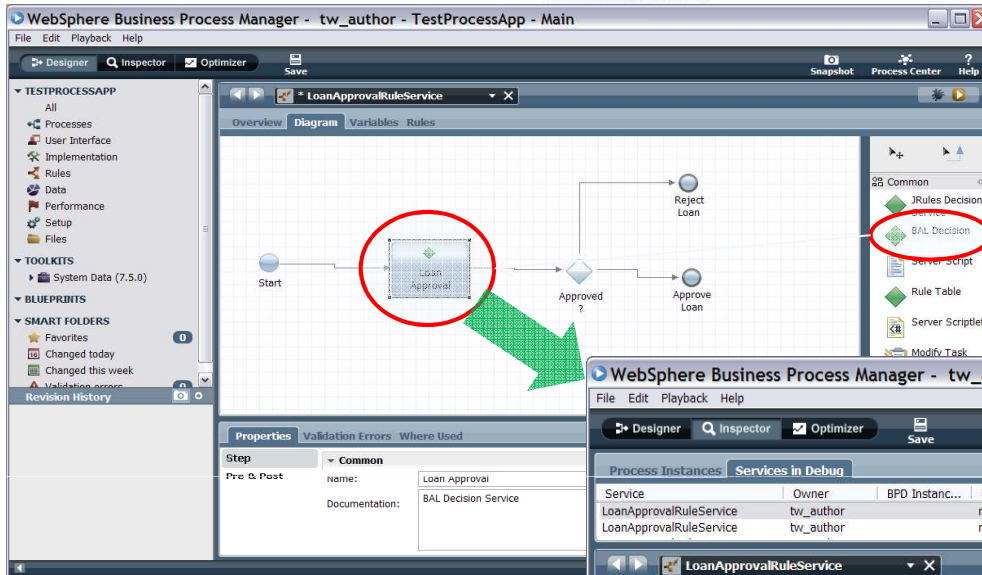
Decision services can contain multiple rules...



The background of the slide is a solid blue color with several overlapping, wavy, semi-transparent bands of varying shades of blue, creating a sense of motion and depth. The text is centered horizontally and vertically on the slide.

ODM and IBM Business Process Manager (BPM 8.5.x)

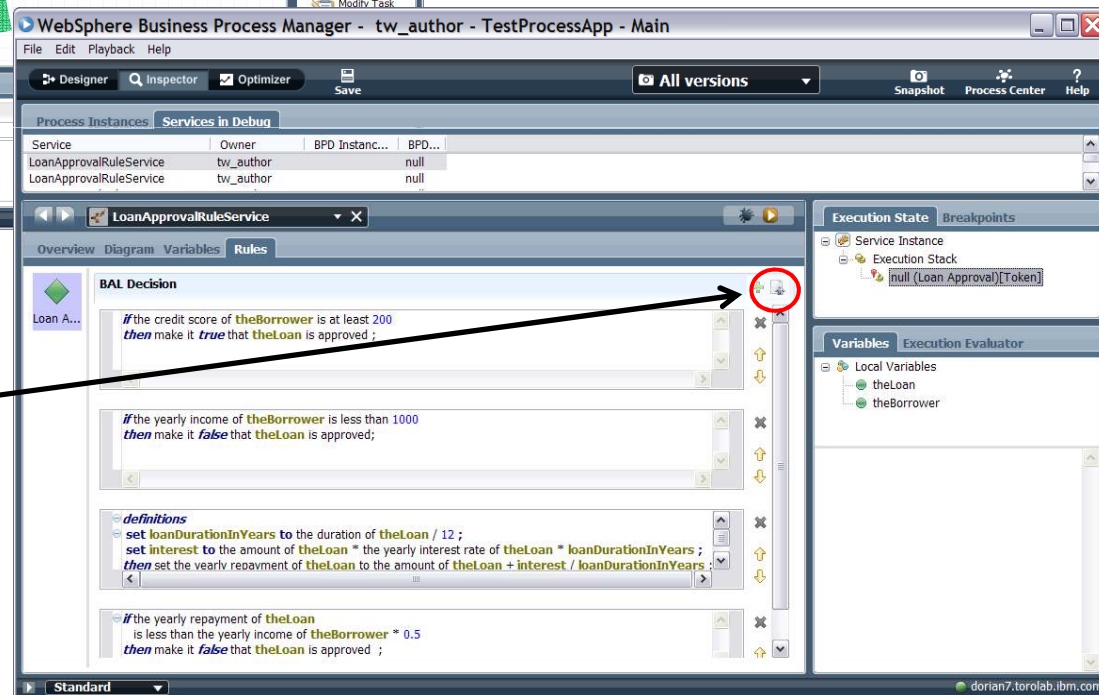
ODM Syntax “Process Rules” included in IBM BPM 8.x



Same Rule Language & same
Intellirule Editor
as IBM ILOG JRules

Embedded JRules engine

Export ruleset as a Rule Project
to move from embedded rules
to external Decision Service
callable by other services and
with access to other external data



Drivers when to externalise the Rules from the Process

- **Rule versioning happening more frequently than process changes**
- **Rules need to be changed by business users**
- **Decision Services to be shared by applications outside of the process**
- **Large numbers of rules or the rules are complex**
- **When you need finer grained control over who can make what changes to the rules**
- **Rule language extensions or simplification required**

BPM 8.x - ODM Connector

Environment Variables

Key	Type	Default	Develop...	Test
res	ILOG Rules Server	http://localhost:8080		

Buttons: Add, Remove

Properties Validation Errors Where Used

Step: Implementation

Discovery

Server: res

SOAP Port: 8080

Username:

Password:

Connect

Rule

Rule App: OffersRuleApp

Version: Latest

Ruleset: Offers

Version: Latest

Generate Types...

Snapshot Process Center Help

Common

- JRules Decision Service
- Server Script
- Rule Script

Properties Validation Errors Where Used

Step: Implementation

Input Mapping

- tw.local.decisionId → DecisionID
- tw.local.account → NewAccount

Output Mapping

- ilog.rules.outputString → tw.local.outputString
- ilog.rules.firedRule... → tw.local.firedRules
- DecisionID → tw.local.decisionId
- NewAccount → tw.local.account

Potential drawbacks of externalising the rules

- Addition of external call overhead to processing time
- Additional complexity of solution
- Another potential area for failure
- None of these are major and are removed with good architecture
- And the benefits far outweigh the drawbacks



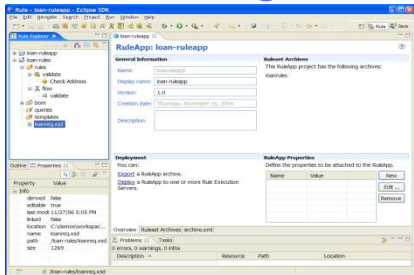


DEMONSTRATION

**Building the Decision Service in IBM ODM
and calling the service from IBM BPM**

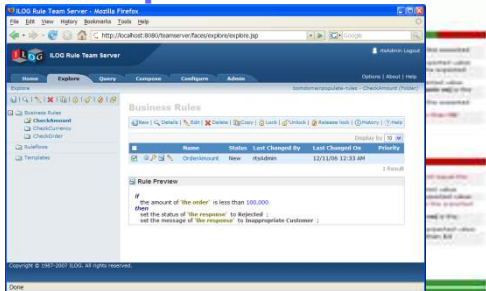
ODM 8.5 Rules Components

Rule Designer



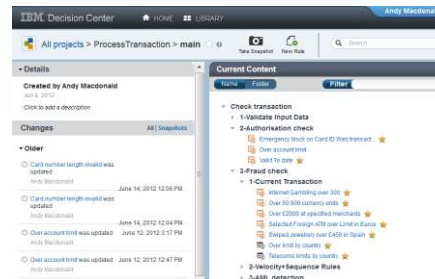
Eclipse-based Rule IDE
Rule design & development

Decision Center Enterprise Console



Full featured Web-based console
for Rule Authoring & Testing

Decision Center Business Console



Simplified, Collaborative
Web-based Rule Authoring

Rule Solutions for Office



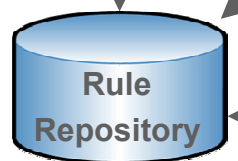
Offline Rule Authoring

Sync

Deploy rules

Deploy rules

Sync

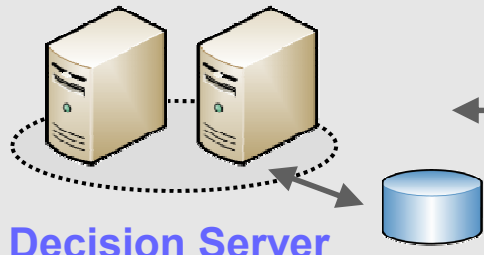


Decision Warehouse

Decision ID	Time	Decision Version	Number of rules used	Decision Name	Decision Type
1827281821447	2008-04-27 14:58:10	1	1	Decision-Execution-1827281821447	Decision
1827281821447	2008-04-27 14:58:10	1	1	Decision-Execution-1827281821447	Decision
1827281821447	2008-04-27 14:58:10	1	1	Decision-Execution-1827281821447	Decision
1827281821447	2008-04-27 14:58:10	1	1	Decision-Execution-1827281821447	Decision
1827281821447	2008-04-27 14:58:10	1	1	Decision-Execution-1827281821447	Decision
1827281821447	2008-04-27 14:58:10	1	1	Decision-Execution-1827281821447	Decision
1827281821447	2008-04-27 14:58:10	1	1	Decision-Execution-1827281821447	Decision
1827281821447	2008-04-27 14:58:10	1	1	Decision-Execution-1827281821447	Decision
1827281821447	2008-04-27 14:58:10	1	1	Decision-Execution-1827281821447	Decision
1827281821447	2008-04-27 14:58:10	1	1	Decision-Execution-1827281821447	Decision

Audit trail of decisions

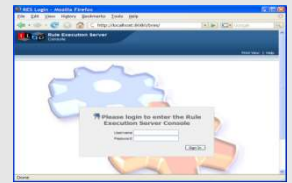
Runtime environment



Decision Server

Single node or cluster (J2SE & J2EE compliant)

Server Console



Web-based admin
console to monitor &
control rule execution

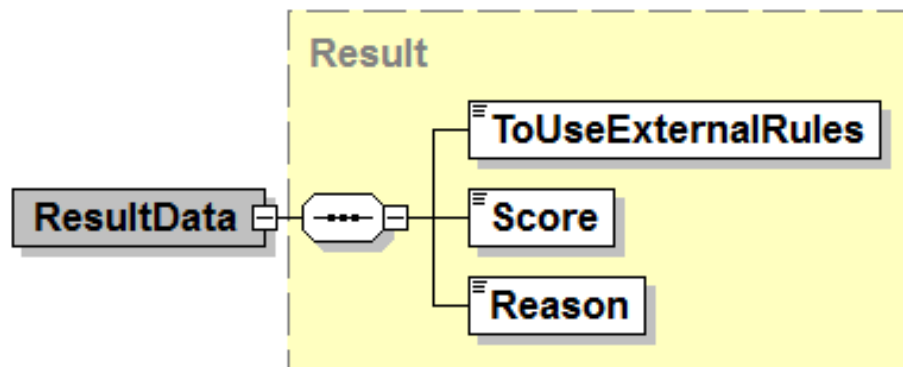


A Rules based Decision Service to decide when to externalise the rules 😊

- **Simple Types IN**

- ChangesPerYear INT
- NumRules INT
- RulesAreComplex BOOLEAN

- **Schema / XML OUT**



The background of the slide is a solid blue color with several overlapping, wavy, semi-transparent bands of varying shades of blue. These bands create a sense of movement and depth, flowing from the top left towards the bottom right. The word "Summary" is positioned on the left side of the slide, centered vertically within the middle section of the wavy bands.

Summary

Summary

- **Use the built-in rules capability if you can**
- **Use external rules when built-in are insufficient**
 - Rule versioning happening more frequently than process/system changes
 - Rules need to be changed by business users
 - Decision Services to be shared by applications outside of the process
 - Large numbers of rules or the rules are complex
 - When you need permission/governance/audit of rules changes
 - Rule language extensions or simplification required
- **Many ways to integrate ODM**
 - Web Services
 - Java (Embedded / POJO / J2SE / J2EE)
 - REST
 - Connectors
- **Native ODM node for IIB**

Questions and Answers

