

# **How Lightweight Is the Liberty Profile?**

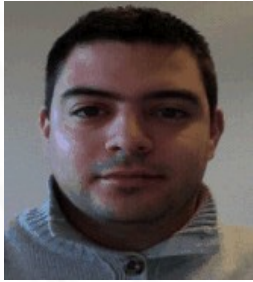
**Simon Maple, IBM**



# **Agenda**

- **What is the Liberty Profile all about?**
- **Raspberry Pi**
- **Embedding the Enterprise**
- **Mobilising Liberty**
- **Tinker Forge**

# Today's Presenter



**Simon Maple**

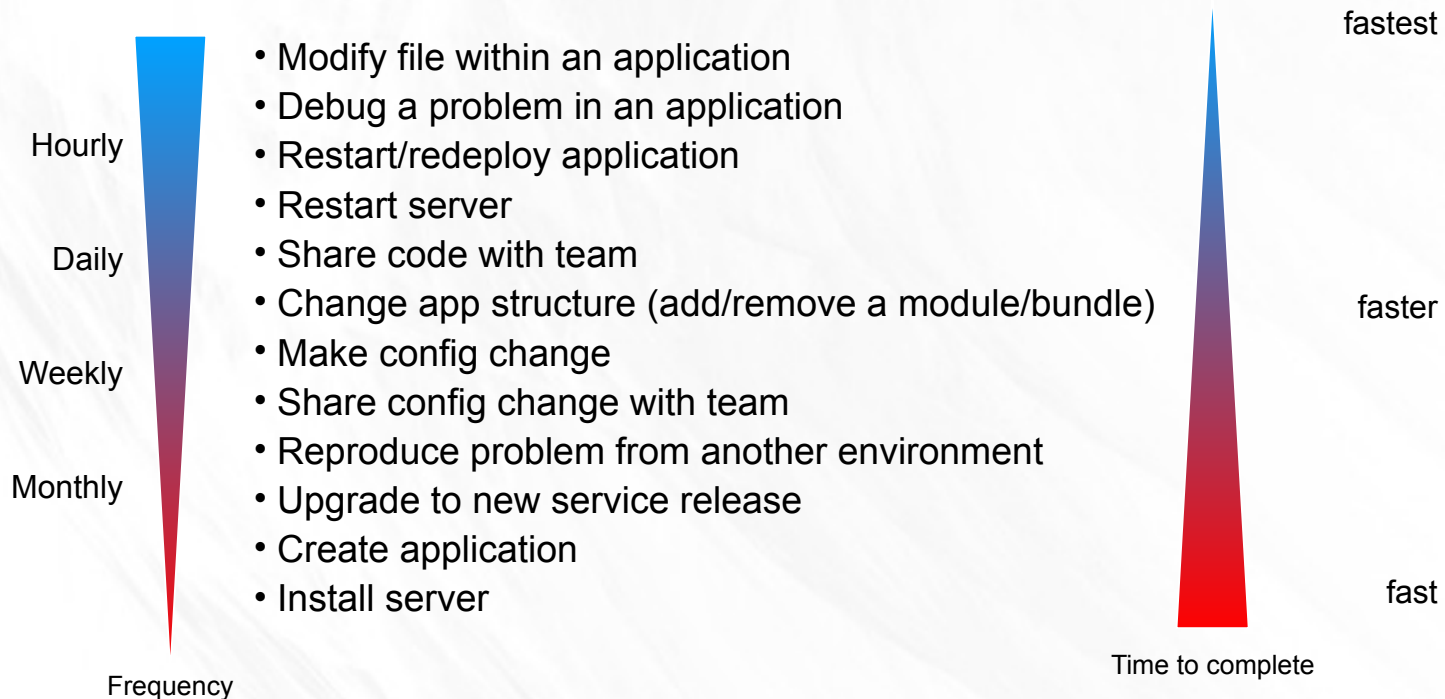
**@sjmaple**

Technical Evangelist

IBM Hursley Park, UK

# What do developers care about?

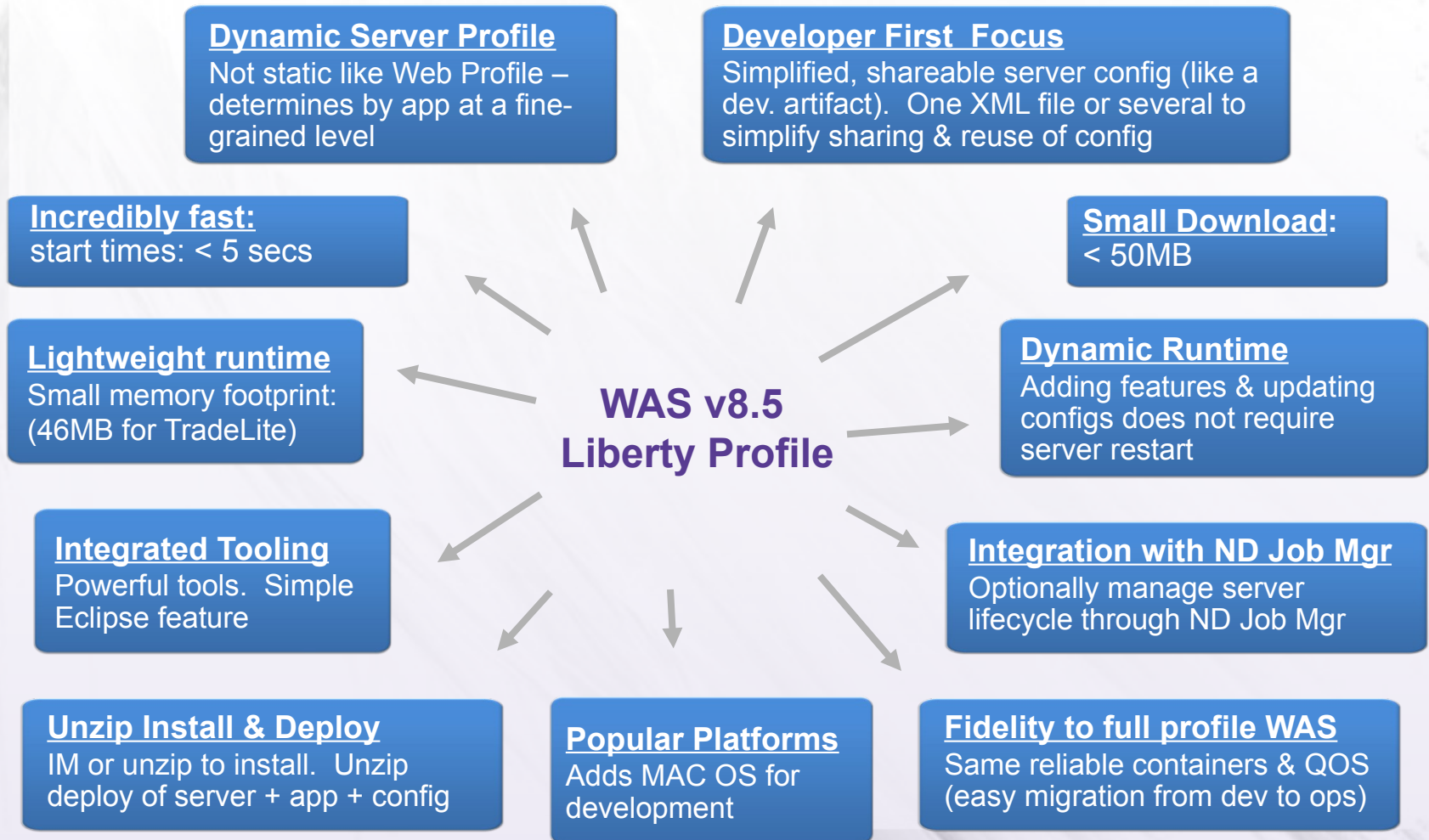
- Common development tasks include:



- All tasks should be as painless as possible, with special emphasis on the more frequent ones. If the time taken to accomplish these tasks is an impediment to the development, the cost of the fidelity of the test server runtime is challenged

# Introducing WAS V8.5 Liberty Profile

*A highly composable, dynamic Server profile*







# No Hurdles to install

Tools and runtime are **free** for development. No time limit

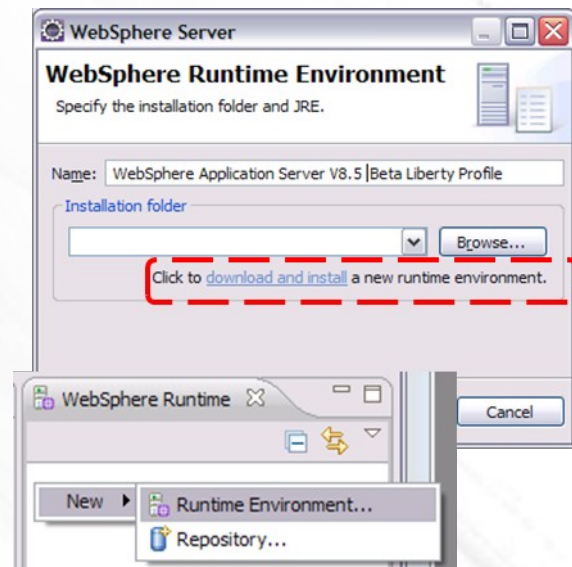
- Eclipse feature install for tools; 40MB zip download for server profile.
  - Installation Manager also supported → same installed result.

2 minutes from “Nothing” to “Done”:

## 1. Install WAS Developer Tools for Eclipse Feature



## 2. Use the Tools to download the WAS Liberty Profile or download 40MB zip from [WASdev.net](http://WASdev.net)



[www.wasdev.net](http://www.wasdev.net)

**WASdev**  
COMMUNITY

# Simplified Configuration

```
<server>
  <featureManager>
    <feature>jsp-2.2</feature>
    <feature>jdbc-4.0</feature>
  </featureManager>

  <logging
    traceSpecification="webcontainer=all=enabled:*=info=enabled"/>

  <application name="tradelite" location="tradelite.war"/>

  <dataSource jndiName="jdbc/TradeDataSource">
    <properties.derby.embedded
      databaseName="${server.config.dir}/tradedb"/>
  </dataSource>
</server>
```

Features control which capabilities (bundles) are installed in the server

'singleton' configurations specify properties for a runtime service like logging

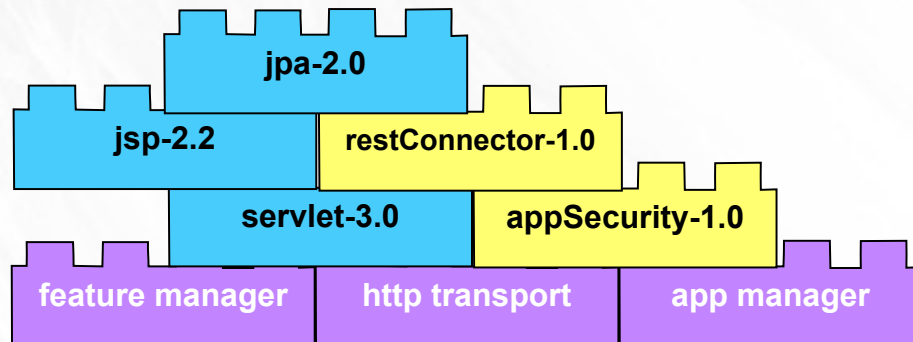
'instance' configurations specify multiple resources like applications and datasource definitions

Any of this configuration could be put into a separate xml file and 'included' in this 'master' configuration file

# Highly composable runtime based on 'features'



Full WAS Profile



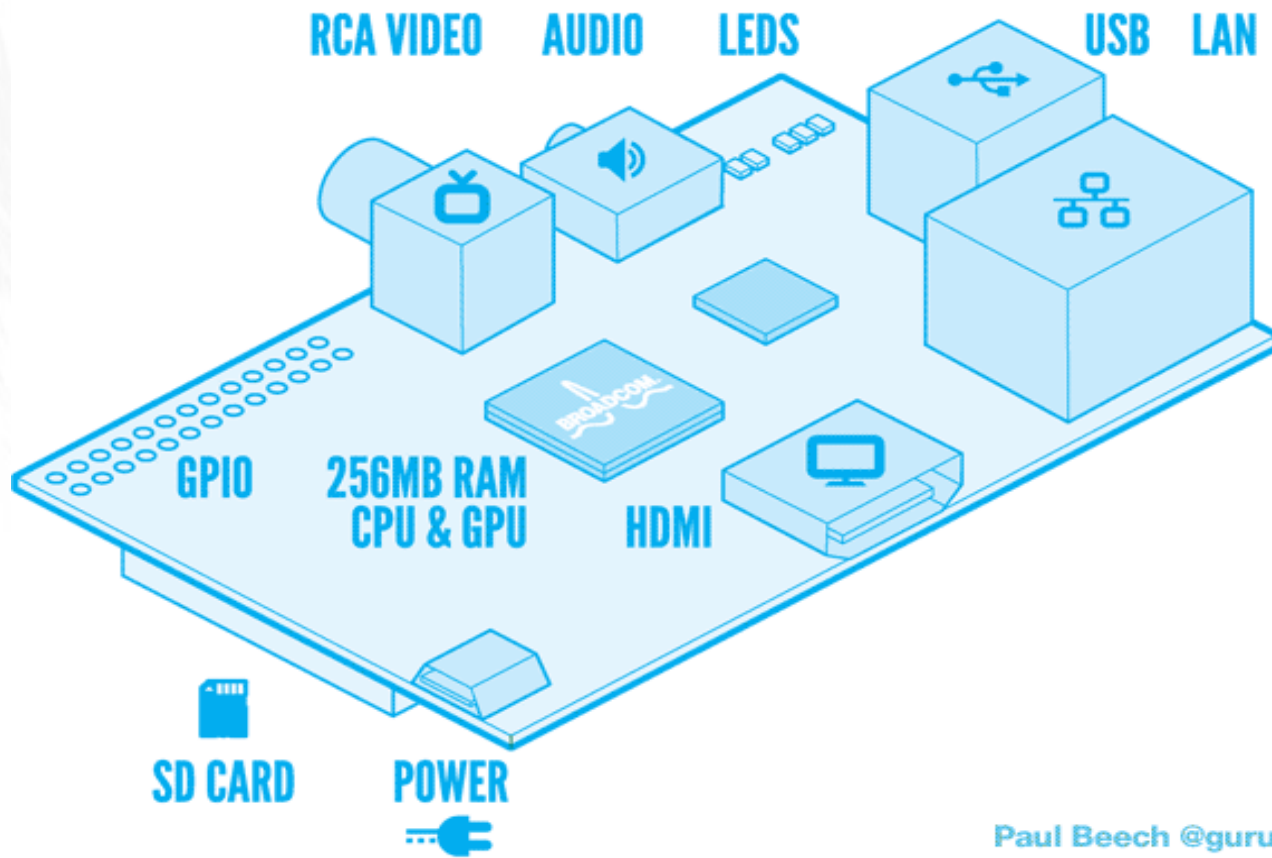
WAS v8.5  
Liberty Profile



# **Demo**

→ **The Liberty Profile**

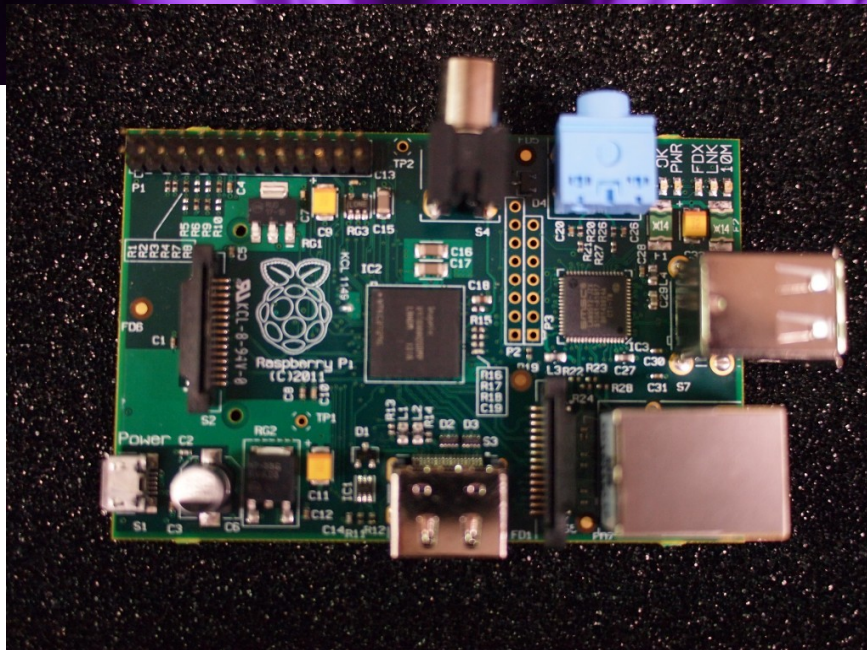
# Raspberry Pi



Paul Beech @guru

# Liberty Pi

WASdev  
COMMUNITY



WebSphere® software

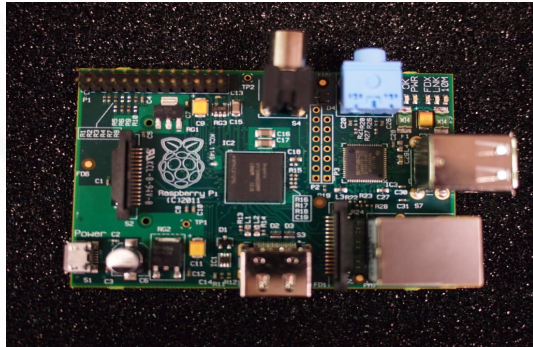
[www.wasdev.net](http://www.wasdev.net)

# **Demo**

→ **Liberty Pi**



# Home Automation



X km



- WAS Liberty Profile
- MQTT client (eclipse paho)
- RSMB (Really Small Message Broker)
- X10 modules with devices attached
- MQ Message broker



# **Demo**

- **Home automation**
- **Liberty mobilized**

# Mobilising Liberty

1. Connect to nexusOne WIFI network

2. Load the Blog:

**<http://192.168.43.1:9080/nexusBlog/>**

3. Creating a post, you must fill out:

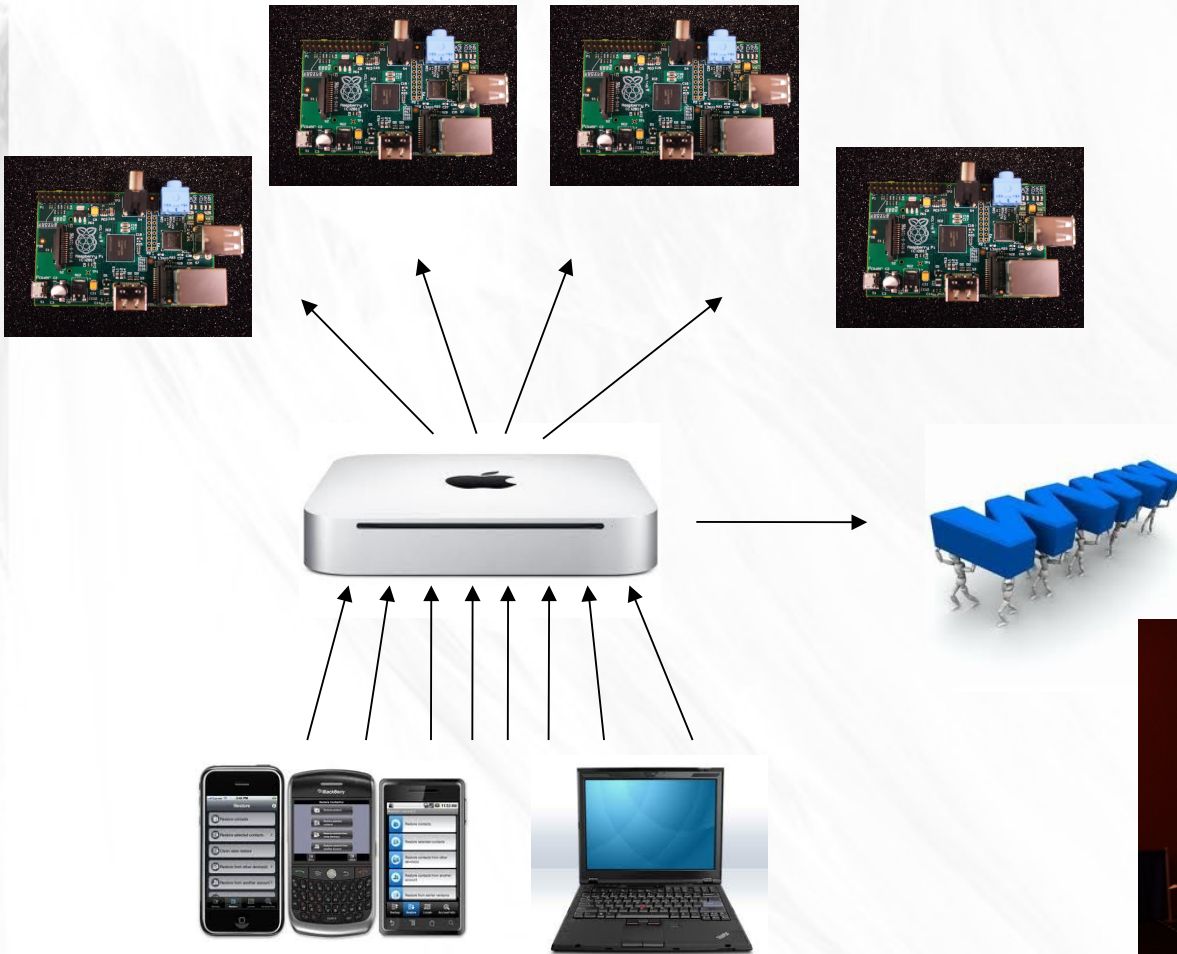
- Title
- Post
- User – guest@ibm.com

# JAX Conf Social Area

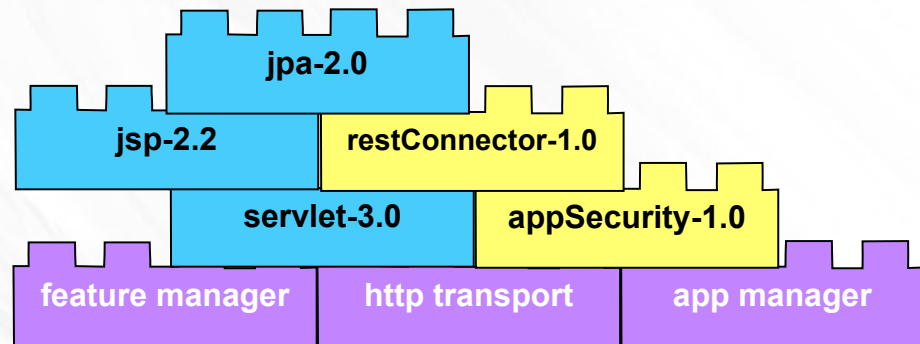
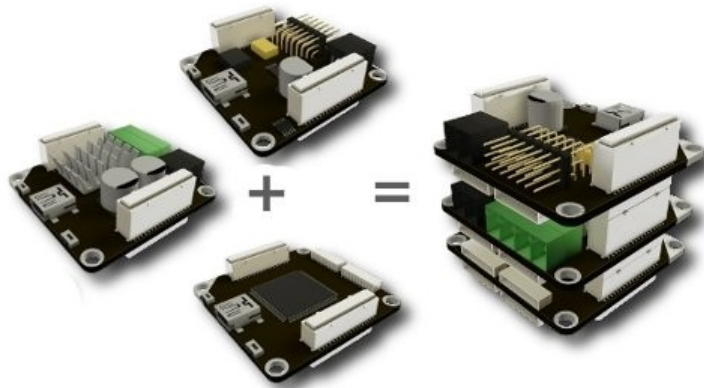


**SOCIAL AREA**

sponsored by



# Tinker Forge

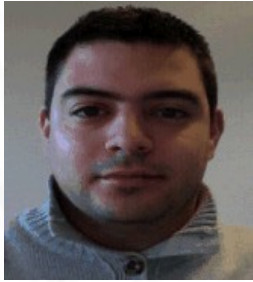


# **Demo**

→ **Tinker Forge**



# Thanks for listening



**Simon Maple**

**@sjmaple**

Technical Evangelist

IBM Hursley Park, UK

