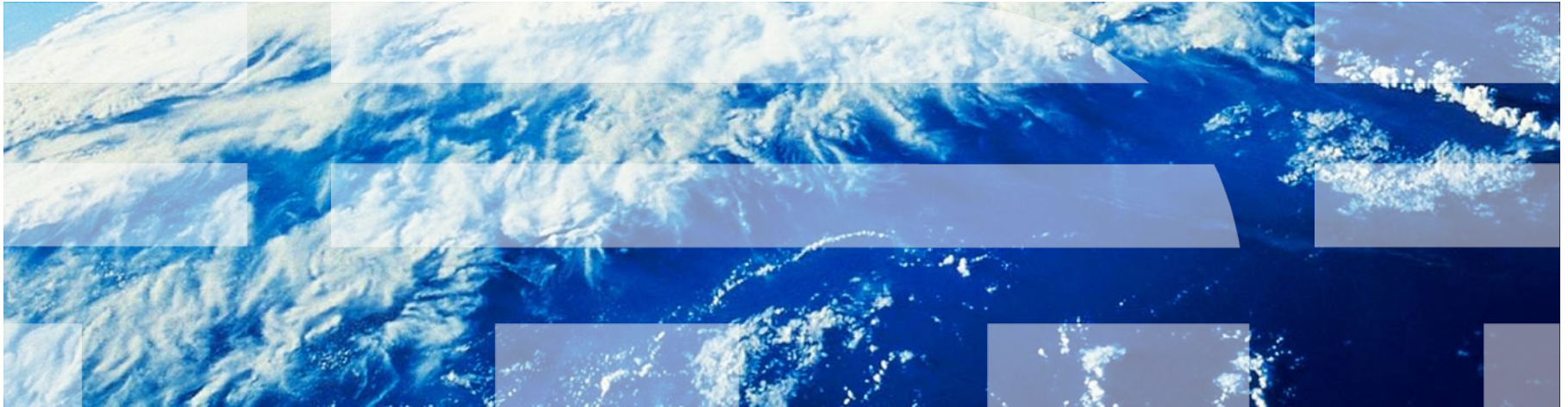


# Configuring SOA Governance on WebSphere Service Registry and Repository (WSRR) using WSRR Studio



## Agenda

- **Introduction**
- Brief Introduction to SOA Governance
- What is WSRR?
- Introduction to WSRR Studio
- Introduction to the Governance Enablement Profile
- Demo of WSRR Studio

---

## About this talk

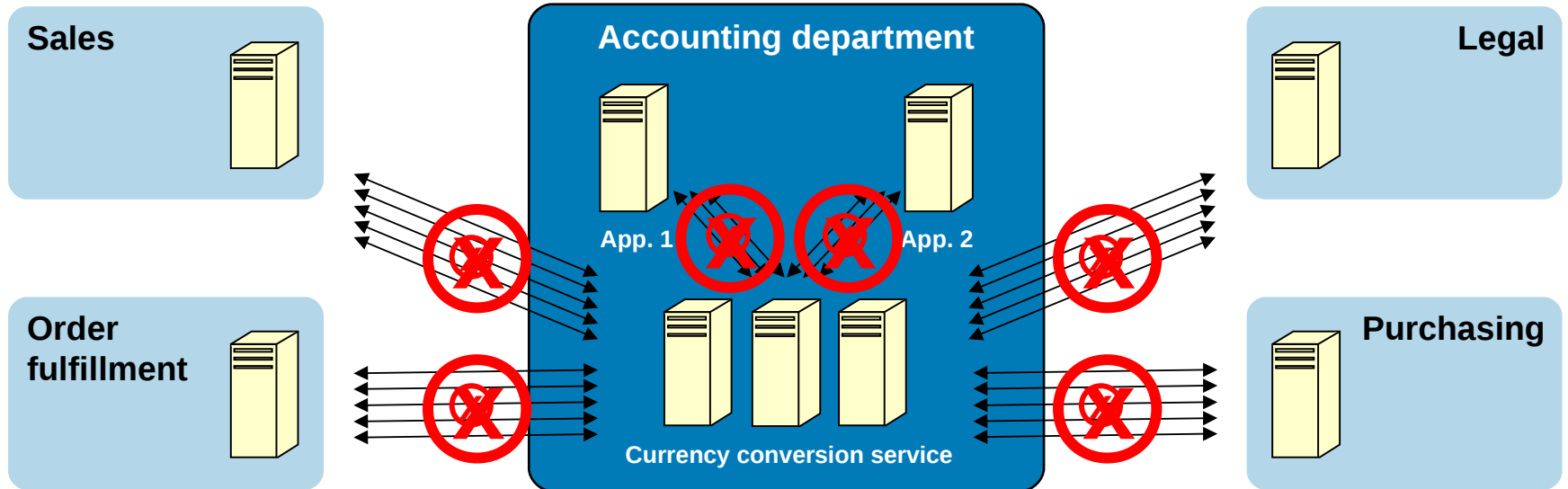
- What this talk covers:
  - A brief look at configuring SOA governance using WSRR Studio
- What this talk doesn't cover:
  - High level strategy
  - Runtime service invocation

## Agenda

- Introduction
- **Brief Introduction to SOA Governance**
- What is WSRR?
- Introduction to WSRR Studio
- Introduction to the Governance Enablement Profile
- Demo of WSRR Studio

# A scenario on the importance of SOA governance

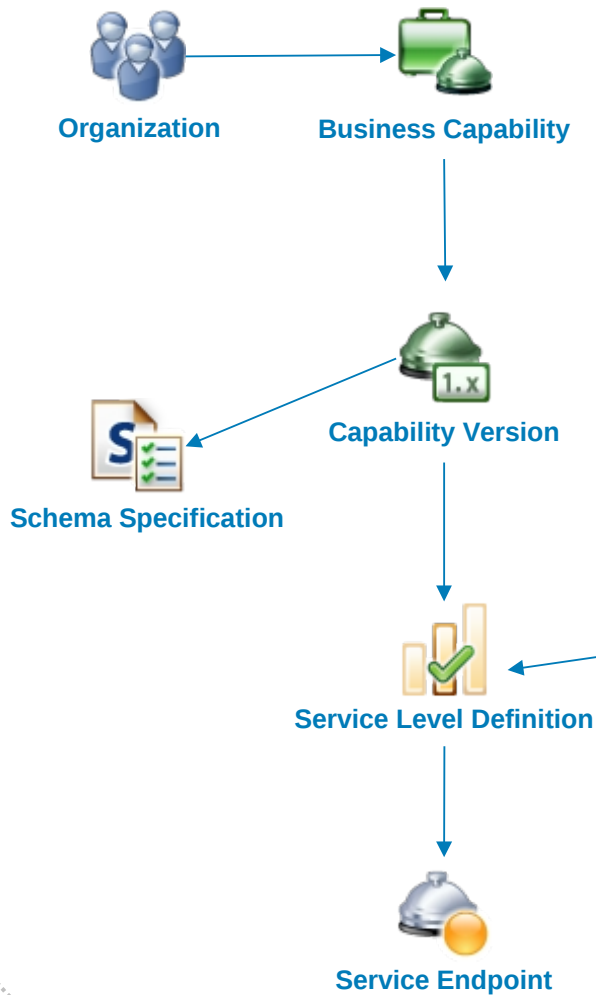
## Client focusing on service control



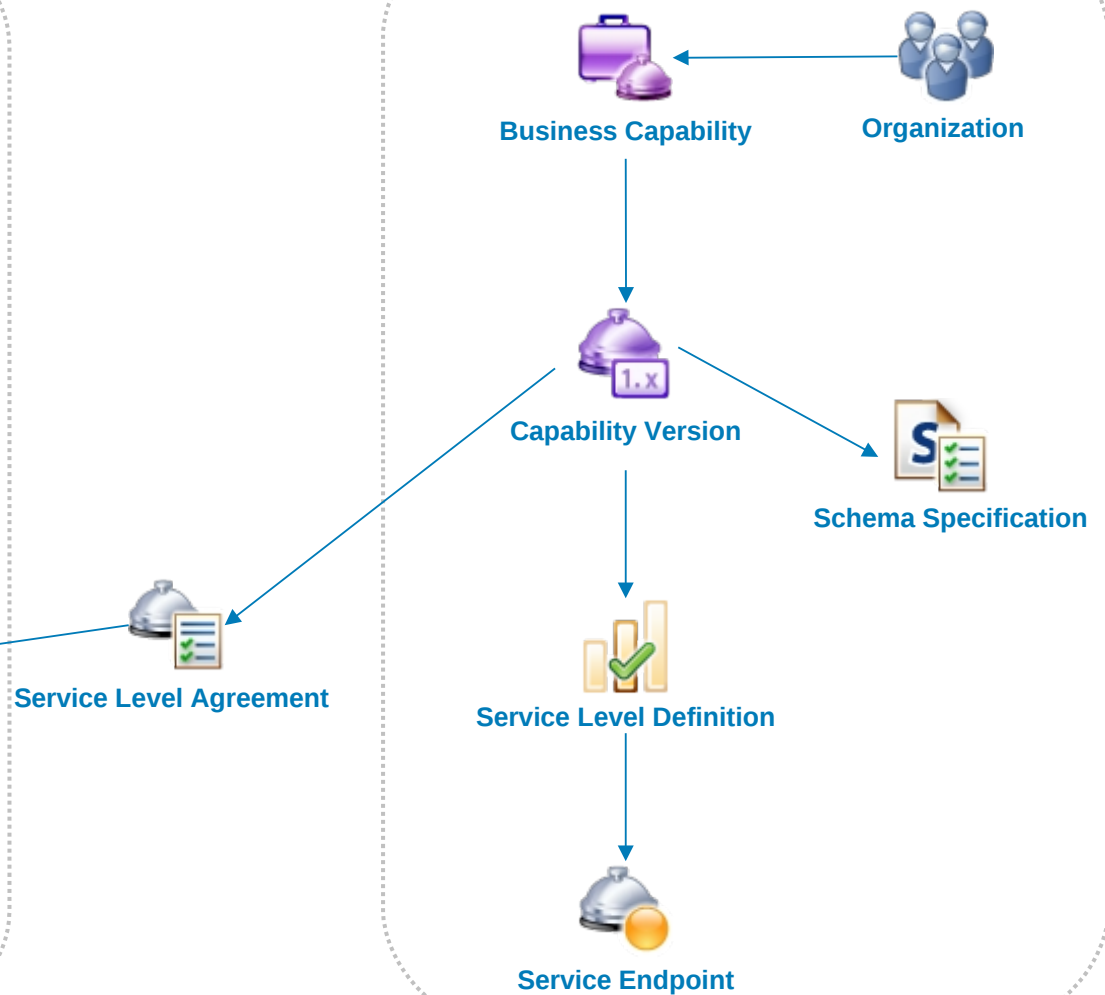
1. Provide a currency service that fills a specific line of business (LOB)
2. Other LOBs start using the service
3. LOBs increase use of services / quality suffers
4. Service is fixed at provider's expense
5. Fix works temporarily but problem reappears
6. Maintenance costs soar / provider ends service

# Governing Service Consumers as well as the Service Provider

## Service Provider



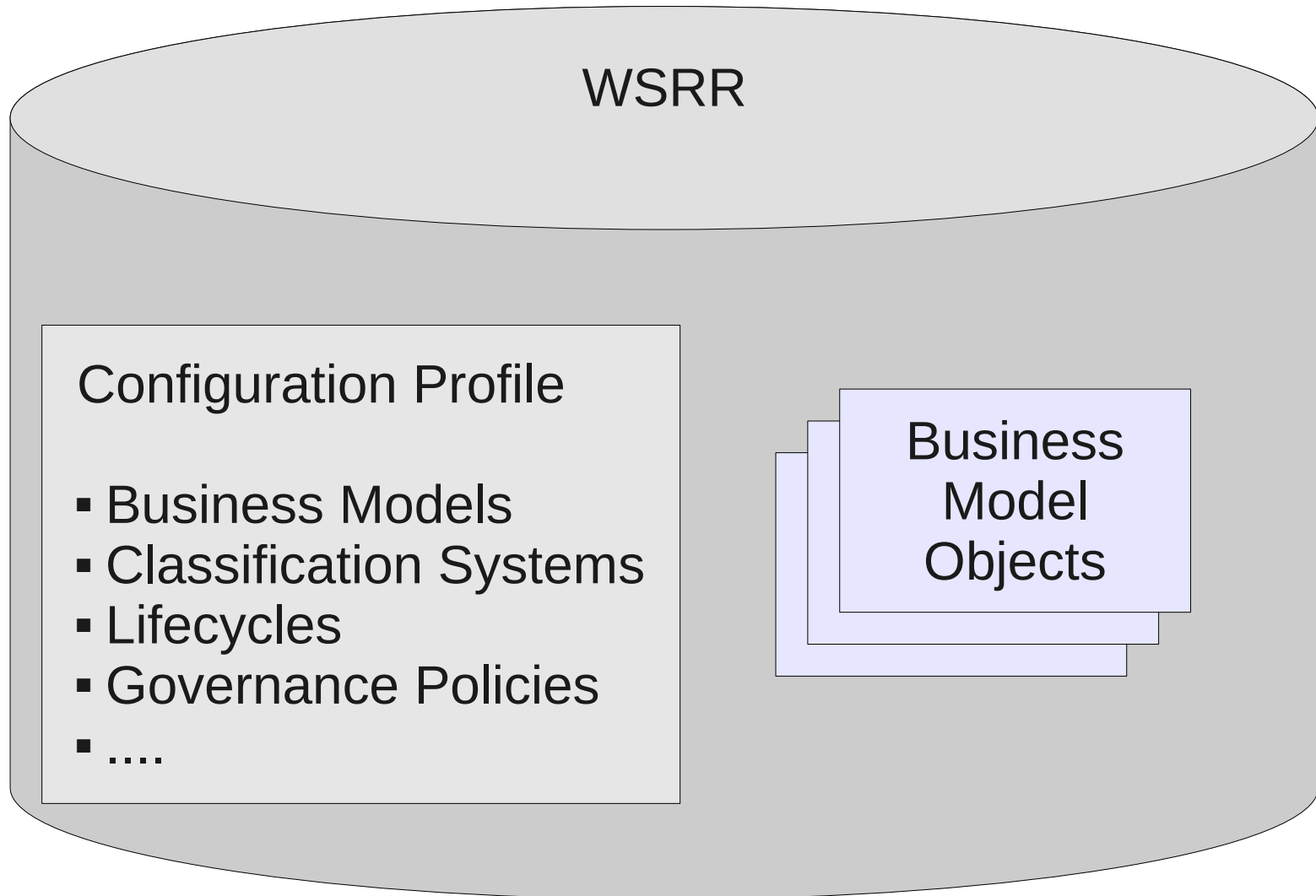
## Service Consumer



## Agenda

- Introduction
- Brief Introduction to SOA Governance
- **What is WSRR?**
- Introduction to WSRR Studio
- Introduction to the Governance Enablement Profile
- Demo of WSRR Studio

## WebSphere Service Registry and Repository (WSRR)





## How can we edit WSRR configuration?

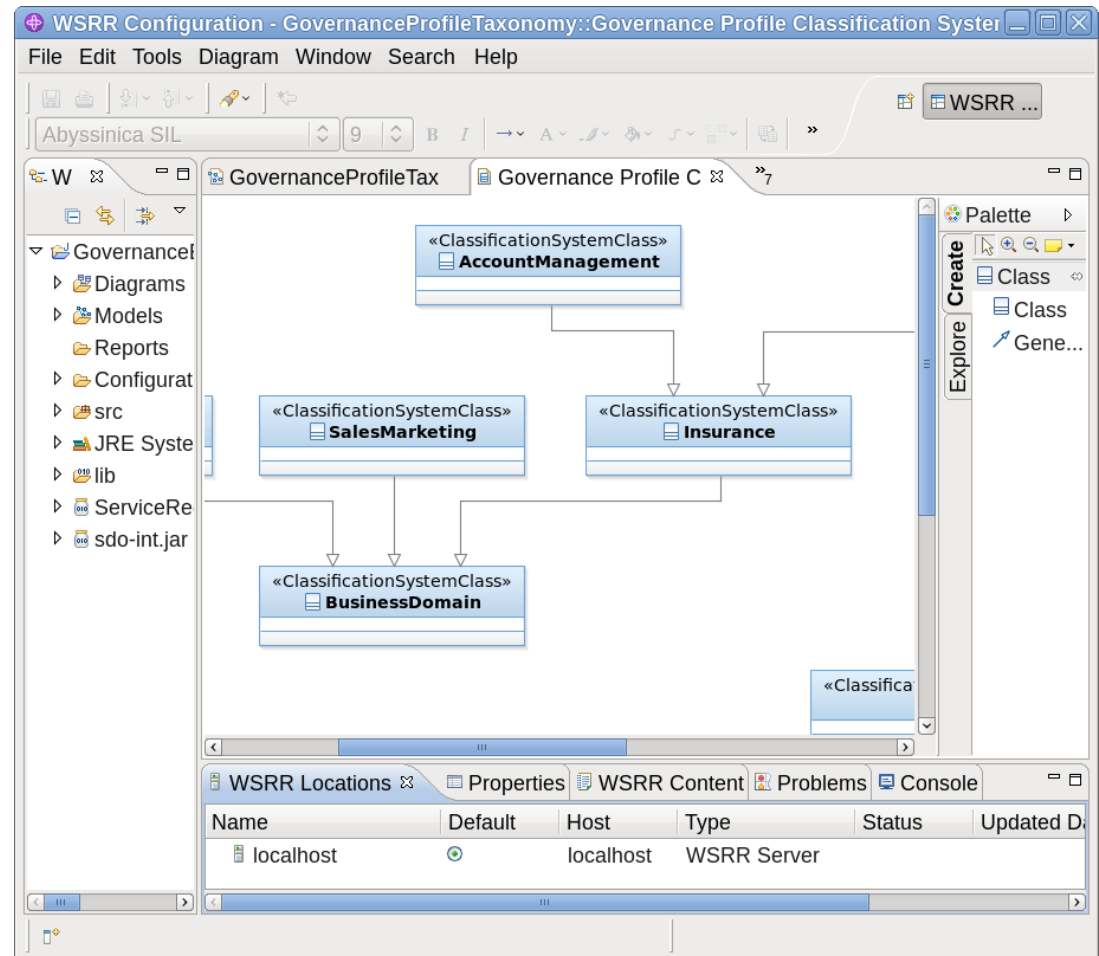
```
<owl:Class rdf:about="&gep63;CapabilityVersion">
  <rdfs:subClassOf>
    <owl:Restriction>
      <owl:onProperty
rdf:resource="&gep63;consumerIdentifier"/>
      <owl:minCardinality
rdf:datatype="&xsd;nonNegativeInteger">0</owl:minCardinality>
    </owl:Restriction>
  </rdfs:subClassOf>
  <rdfs:subClassOf>
    <owl:Restriction>
      <owl:onProperty
rdf:resource="&gep63;consumerIdentifier"/>
```

## Agenda

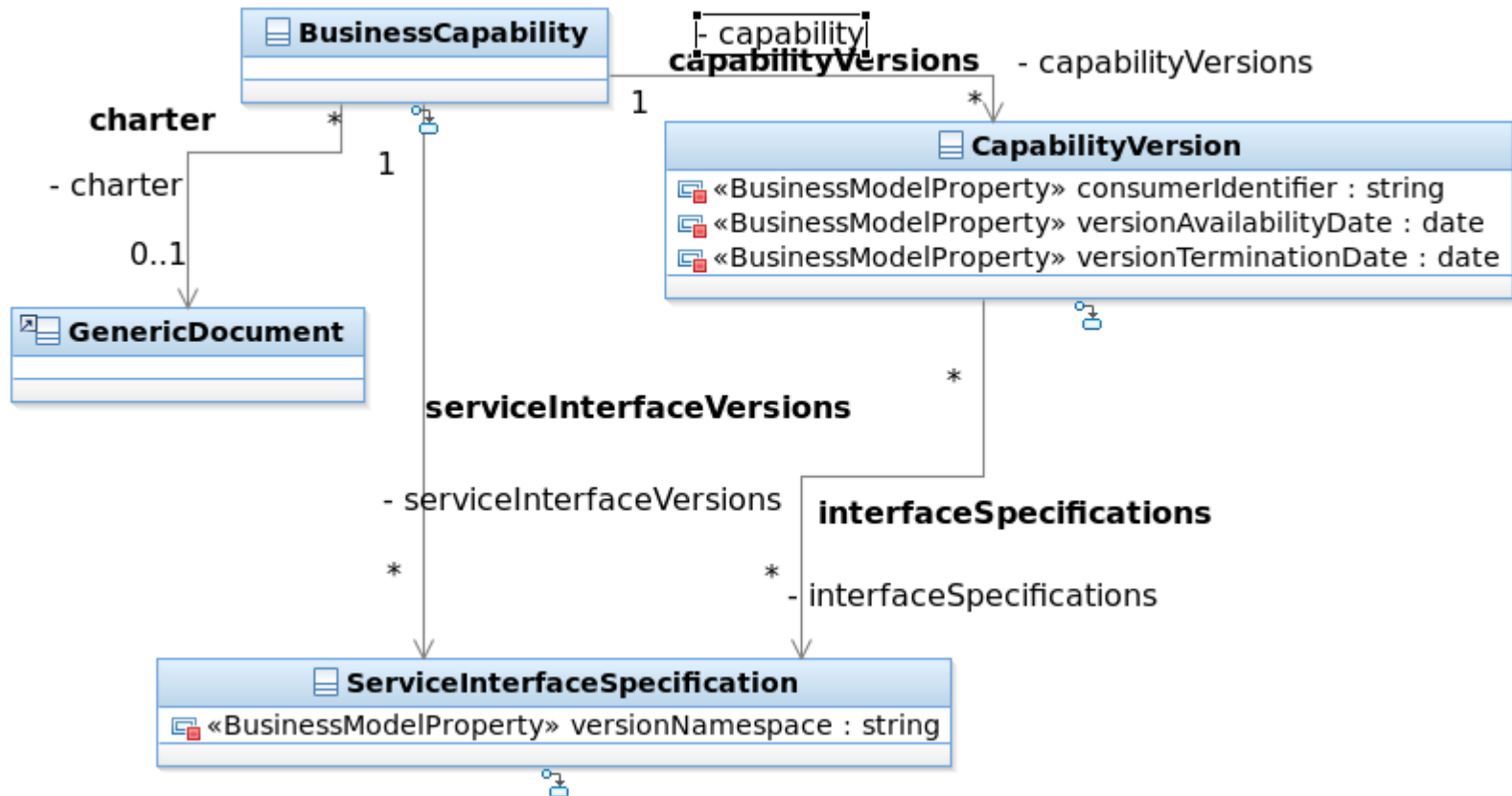
- Introduction
- Brief Introduction to SOA Governance
- What is WSRR
- **Introduction to WSRR Studio**
- Introduction to the Governance Enablement Profile
- Demo of WSRR Studio

# WSRR Studio

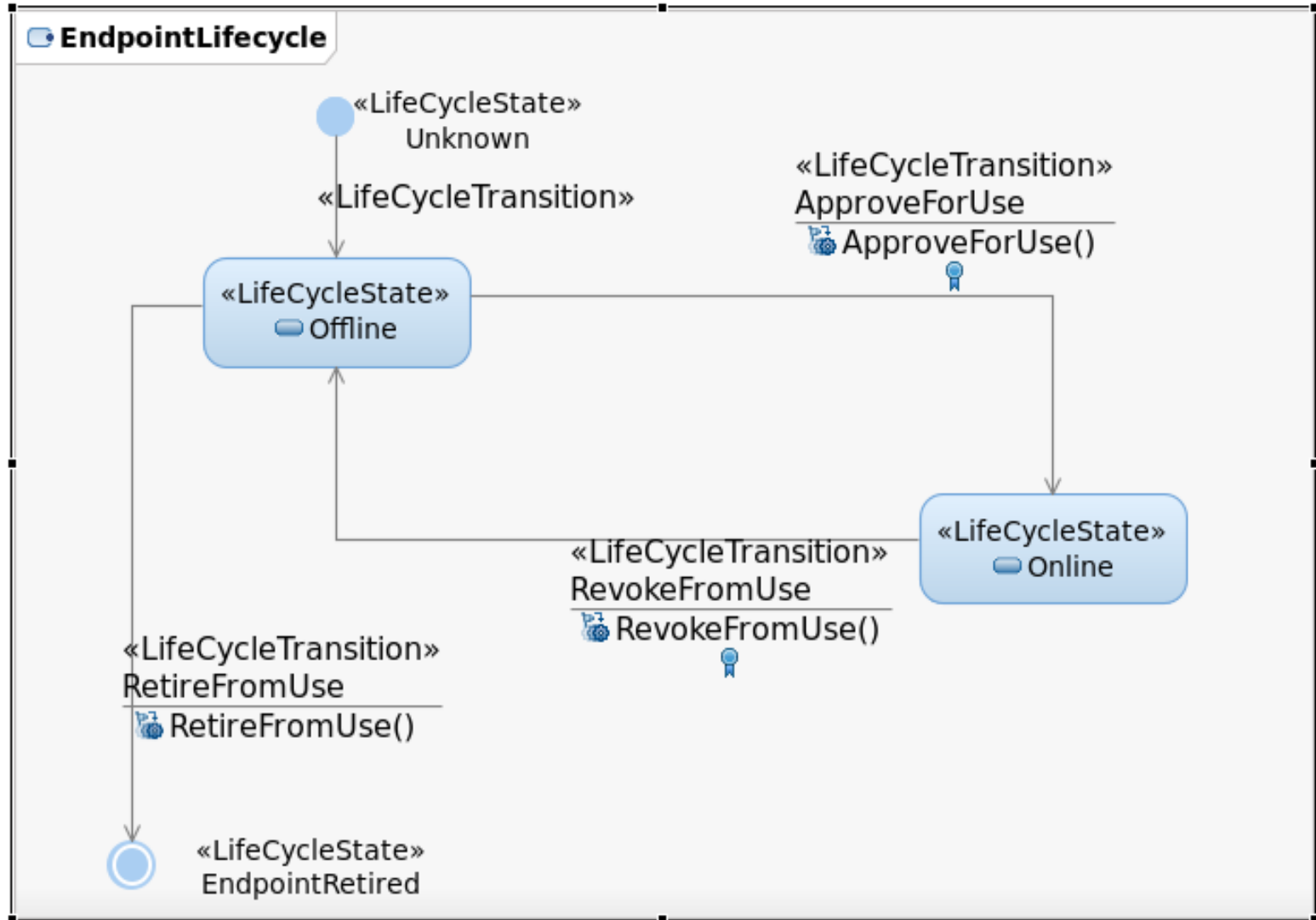
- A tool for editing WSRR configuration profiles
- Has editors for many WSRR configuration objects
- Based on Eclipse



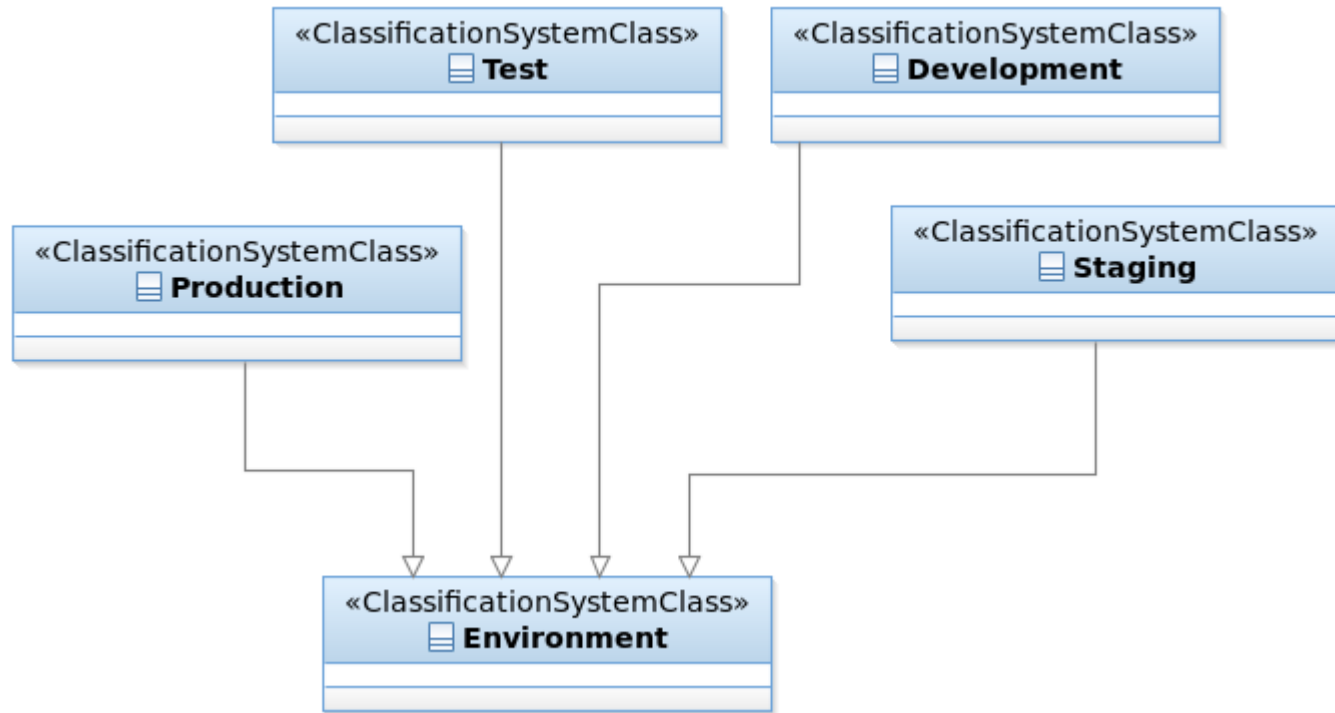
# Business Models



# Lifecycles



# Classifications



# Governance Policies

## Policy Properties

Name

## Applies to

### WSRR Operation

- Create
- Transition
- Update
- Make Governable
- Delete
- Remove Governance
- Validate

### Transitions

Name	Lifecycle	URI	
ApproveForUse	EndpointLifecycle, DefaultLifecycle	http://www.ibm.com/xmlns/prod/serviceregistry/lifecycle/v6r3/	<input type="button" value="Add..."/> <input type="button" value="Remove"/>

### Targets (XPath expression)

### Roles

Role	
	<input type="button" value="Add..."/> <input type="button" value="Remove"/>

## Pass if

Display Names

**The policy will pass if the following conditions are satisfied:**

- Classified as **Environment**

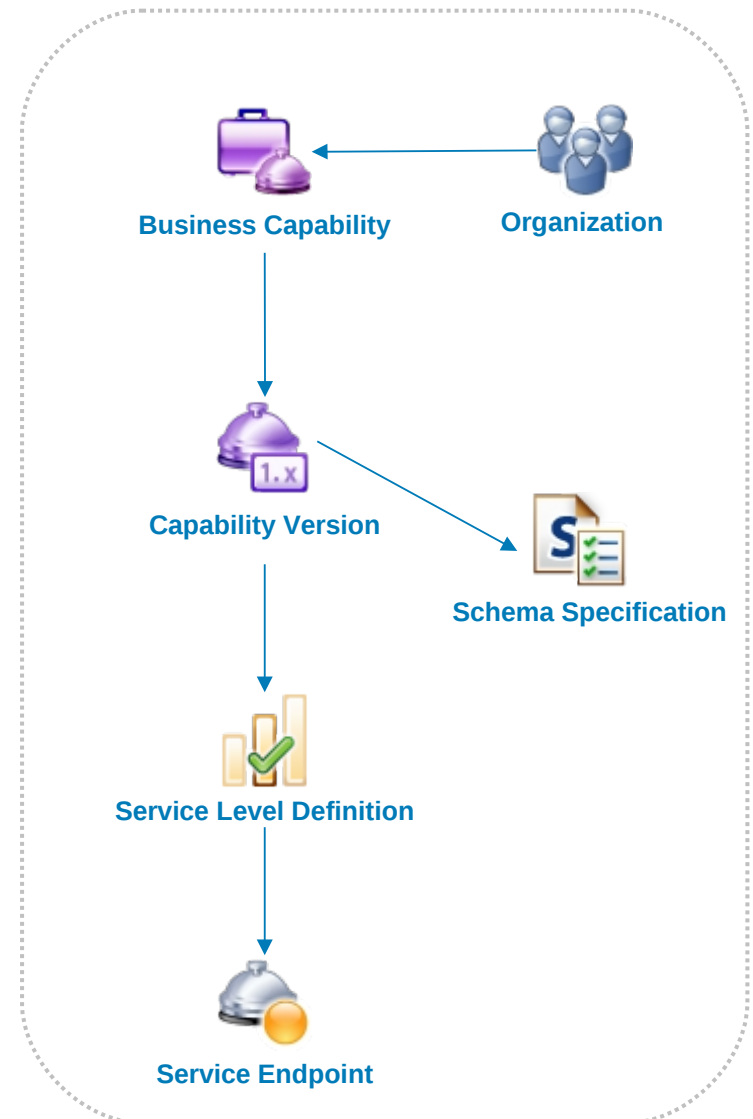
## Agenda

- Introduction
- Brief Introduction to SOA Governance
- What is WSRR
- Introduction to WSRR Studio
- **Introduction to the Governance Enablement Profile**
- Demo of WSRR Studio



## The Governance Enablement Profile

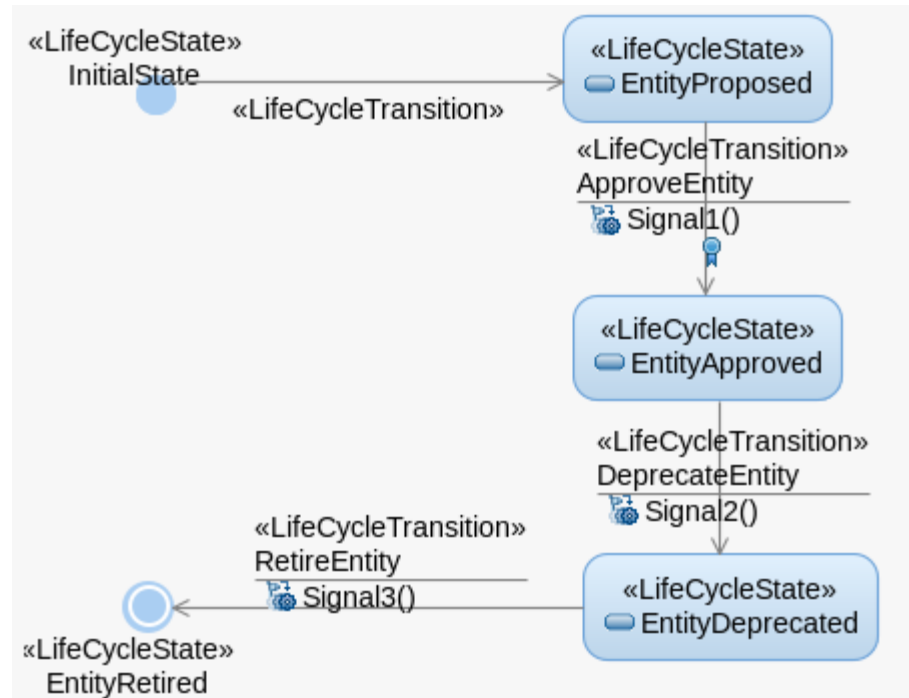
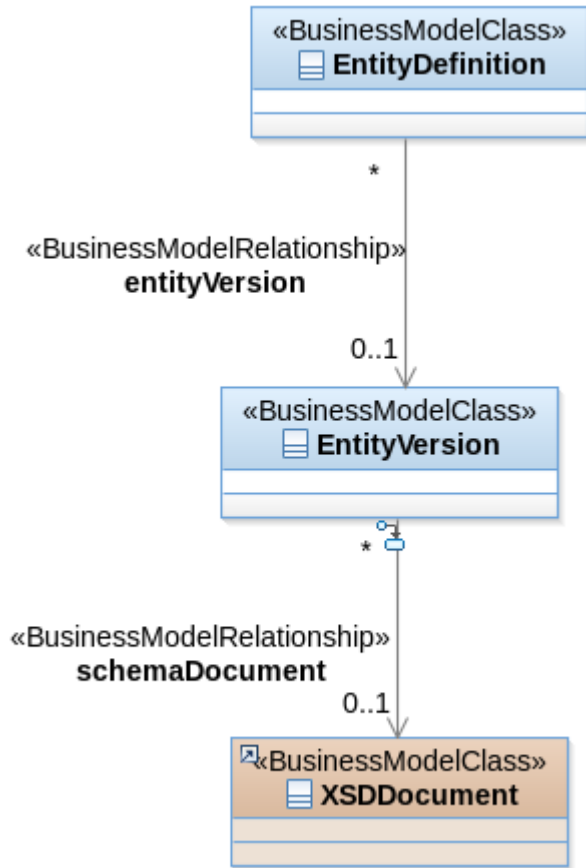
- A blueprint for best practices
- Business Models, Lifecycles, Governance Policies etc.
- It's big – but you don't need to use all of it
- If you're not using one part, maybe that's a hint that you need to look at that area



## Agenda

- Introduction
- Brief Introduction to SOA Governance
- What is WSRR
- Introduction to WSRR Studio
- Introduction to the Governance Enablement Profile
- **Demo of WSRR Studio**

# Let's create a new business model and lifecycle



---

Questions?



Thank  
YOU

