

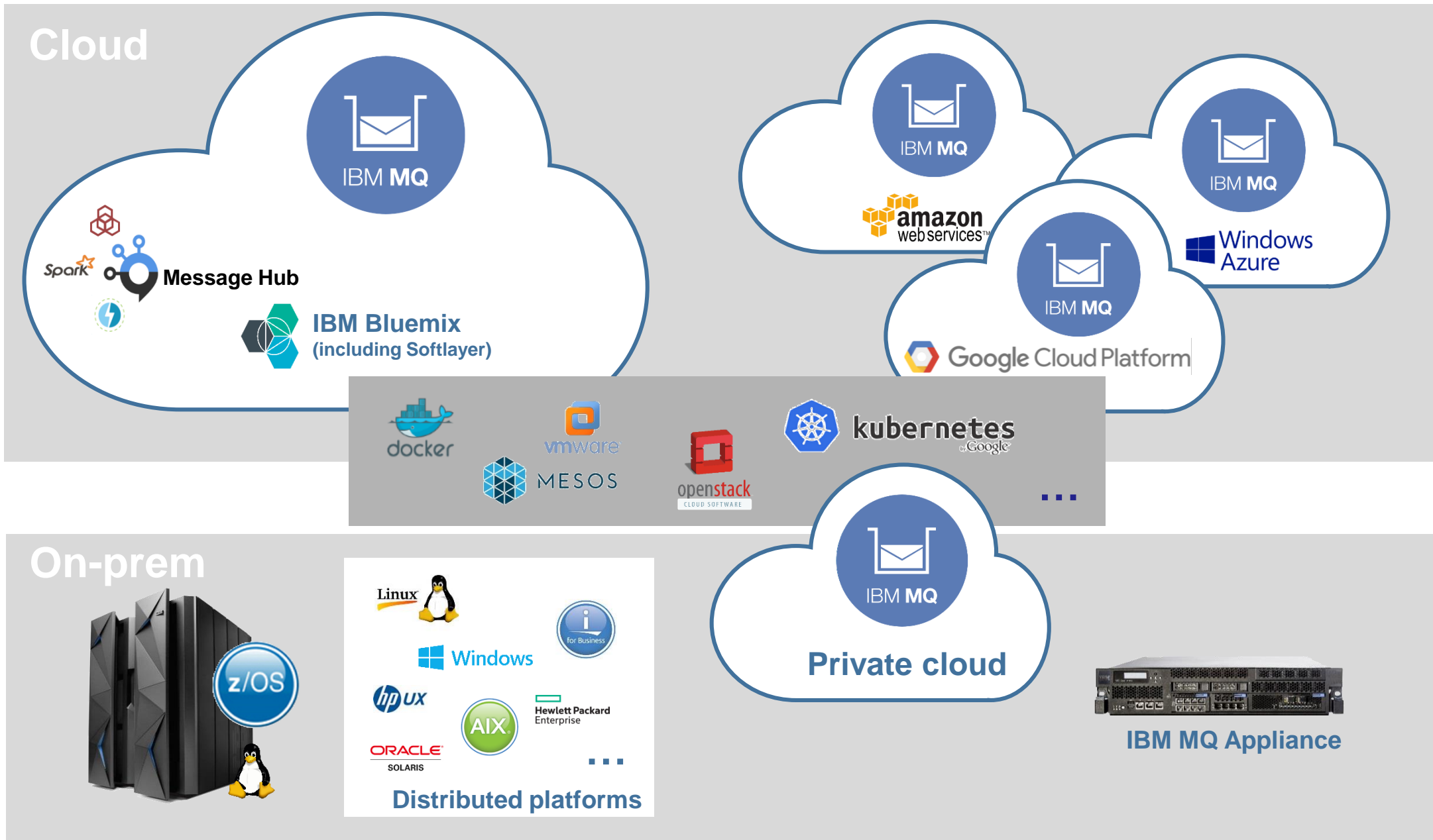
What's new in the world of IBM MQ?

David Ware

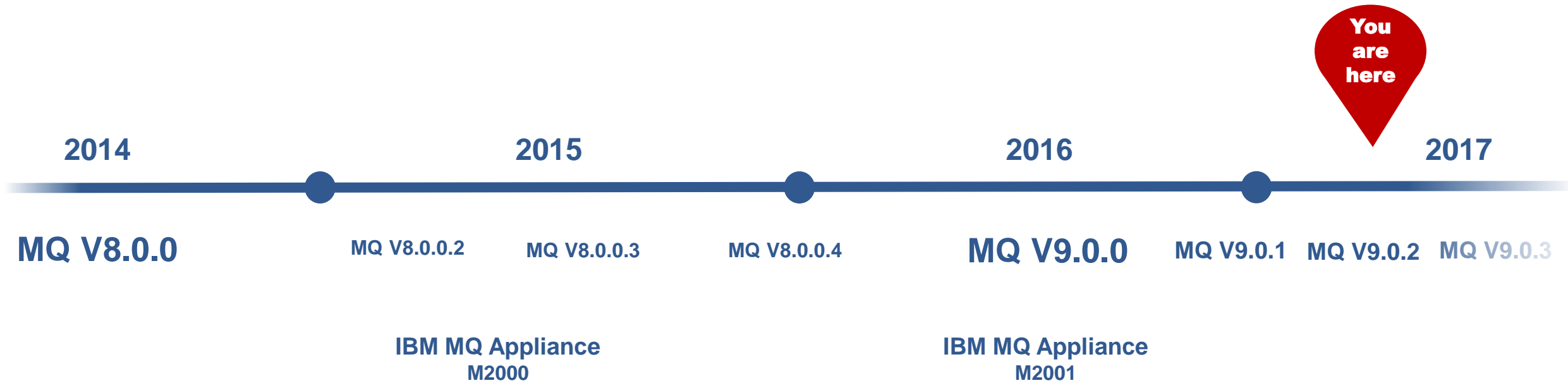
Chief Architect, IBM MQ Distributed and Cloud



Run MQ, exactly how and where you need it



IBM MQ



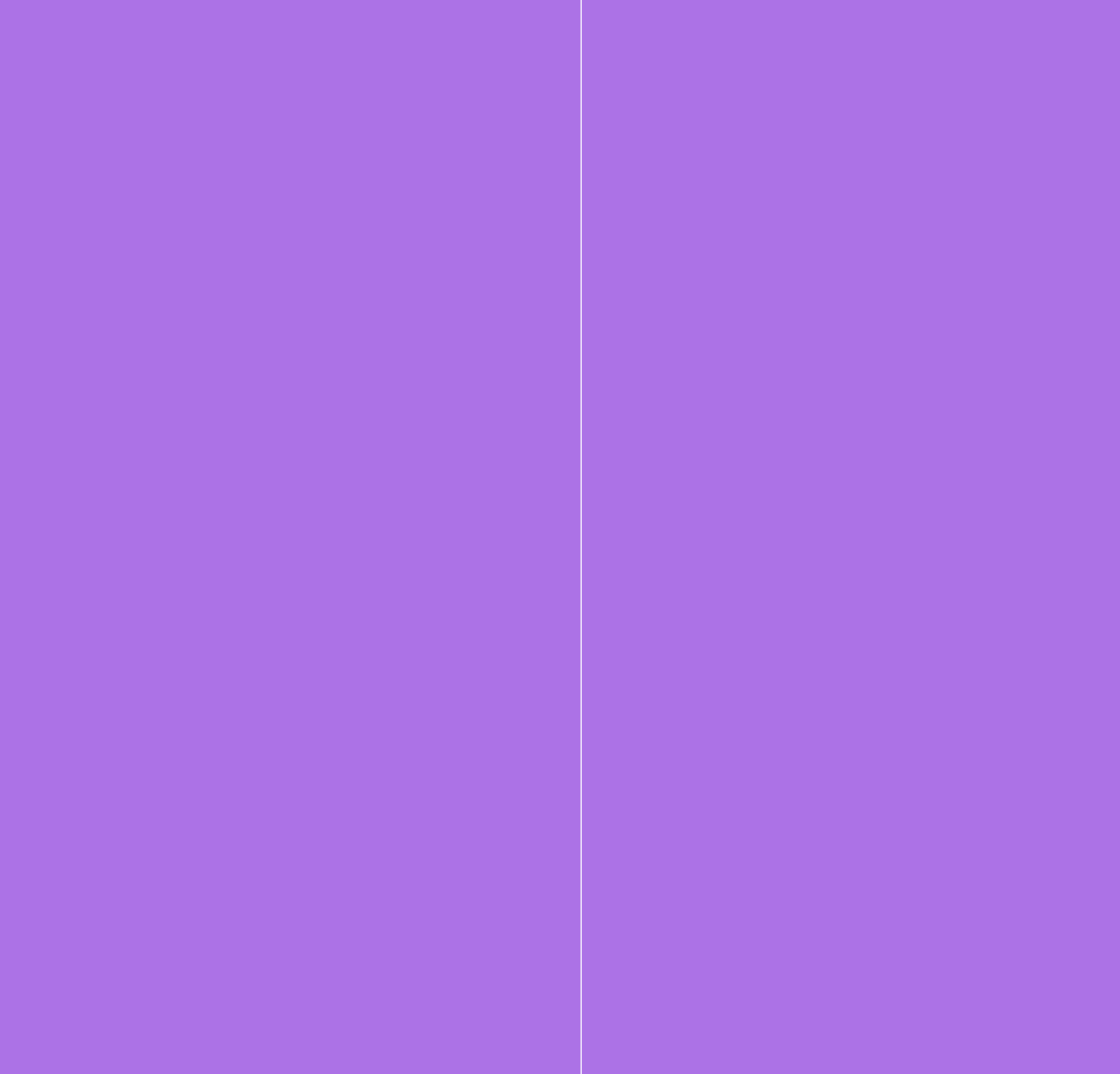
IBM MQ has been regularly delivering new function release on release

Through releases

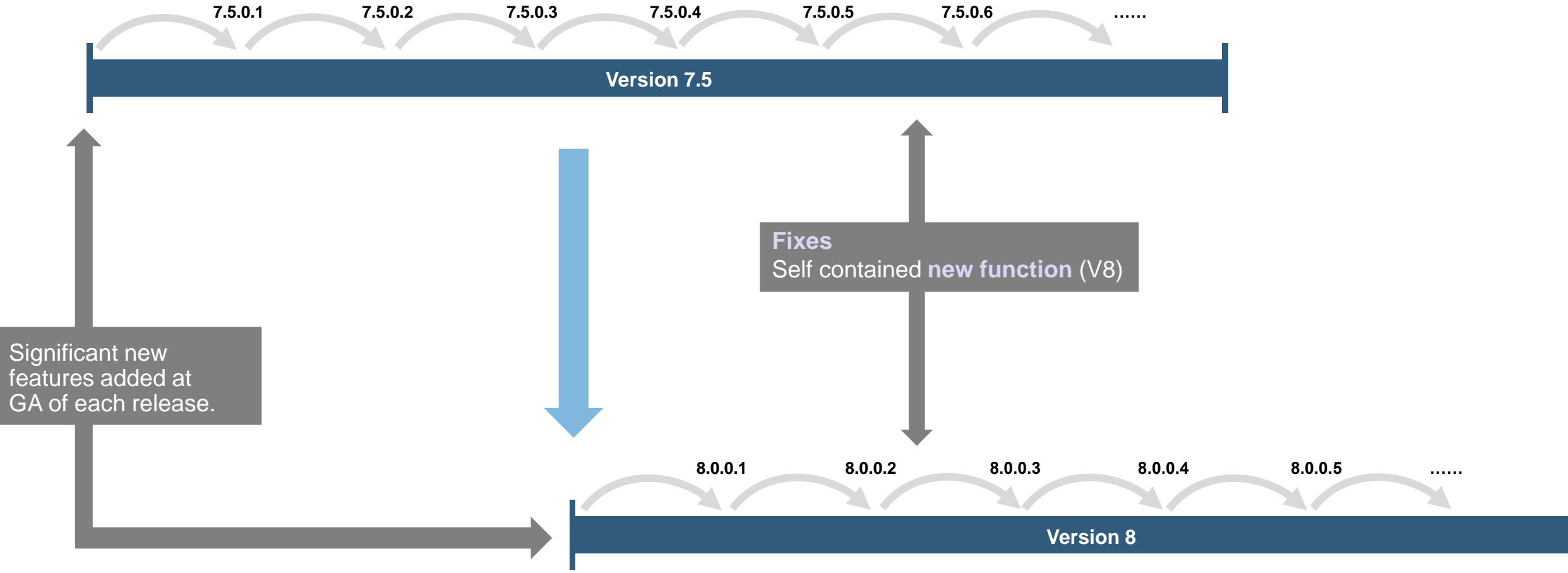
New platforms and environments

2016 was the start of MQ's **continuous delivery** model

Continuous Delivery



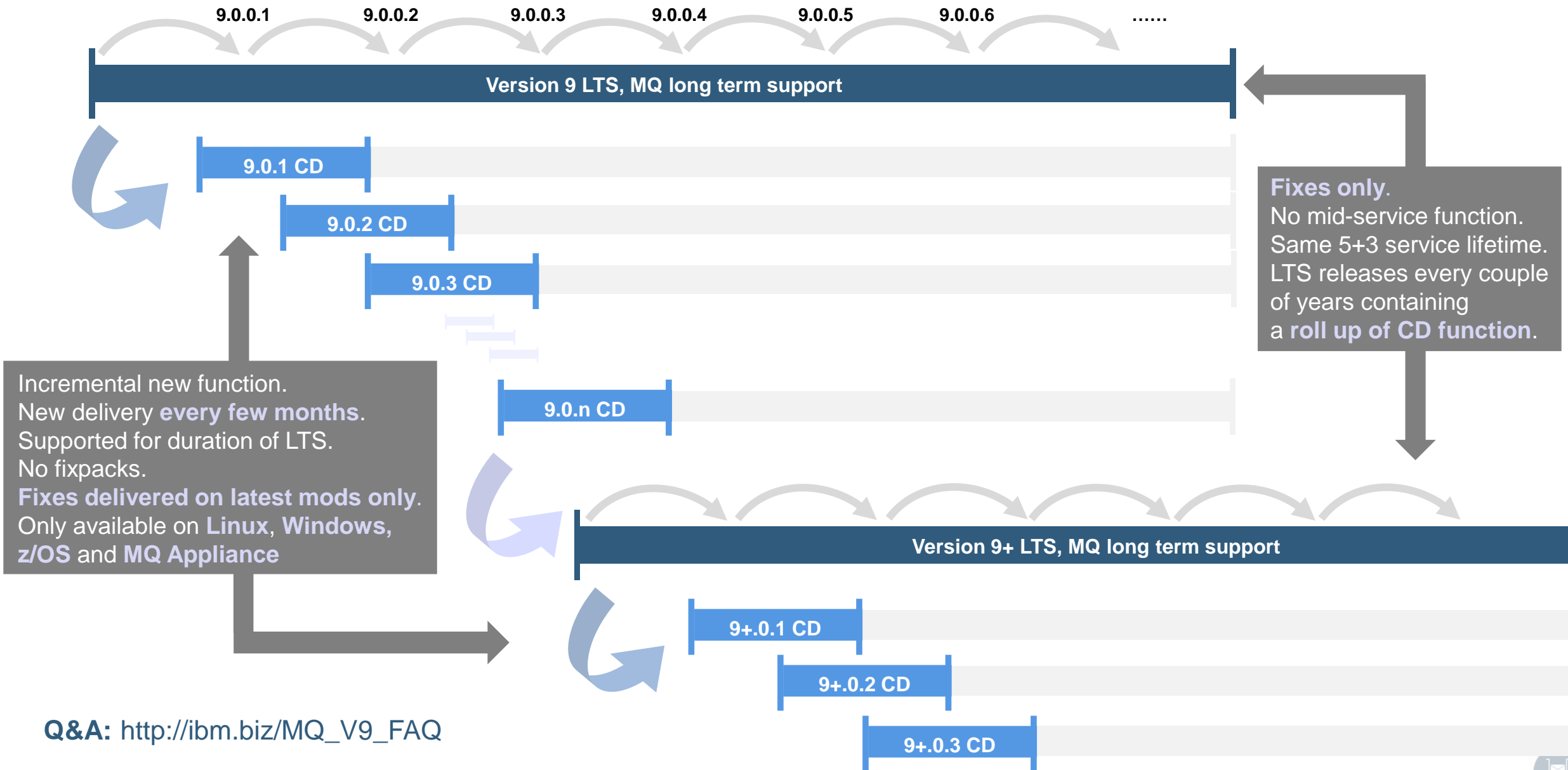
Previously: Service and continuous delivery combined



Q&A: http://ibm.biz/MQ_V9_FAQ



Today: Service and continuous delivery separated



Q&A: http://ibm.biz/MQ_V9_FAQ

IBM MQ V9 LTS

June 2016

IBM MQ V9 LTS

Made available **June 2016** for Distributed and z/OS platforms

Primary objective for MQ V9 was as the basis for the new long term support (LTS) and continuous delivery (CD) model

Rolls up all post-V8 features into a GA version

Plus further capabilities...



Advanced Message Security

high performance policy

New quality of service for AMS

We already had **Integrity**

This proves authenticity through digital signing

And **privacy**

This adds encryption to the digital signing

We've added **Confidentiality** to provide encryption *without the digital signing*

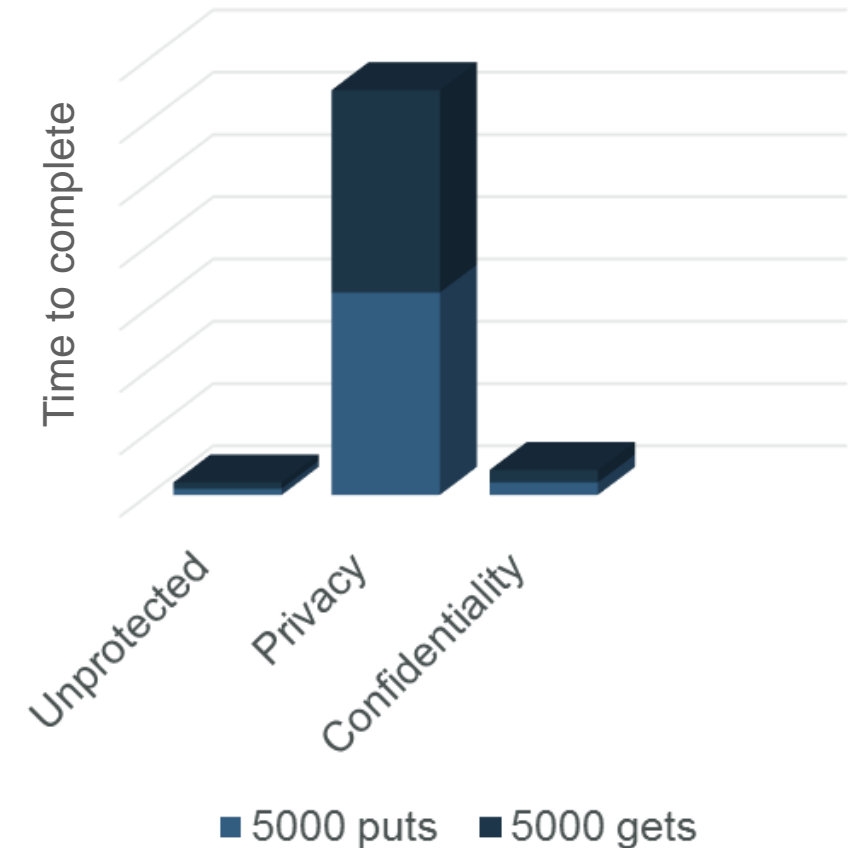
Significant performance gains over Integrity and Privacy

Especially with key reuse

Only receiver's certs require distribution to applications

Available for Distributed and z/OS

AMS Performance



Central provisioning of CCDT

Client Channel Definition Table is a method to configure MQ client connectivity

- Holds all the information needed for a client to connect to any queue manager it may need

- When queue managers or their channel configuration changes new CCDTs are required

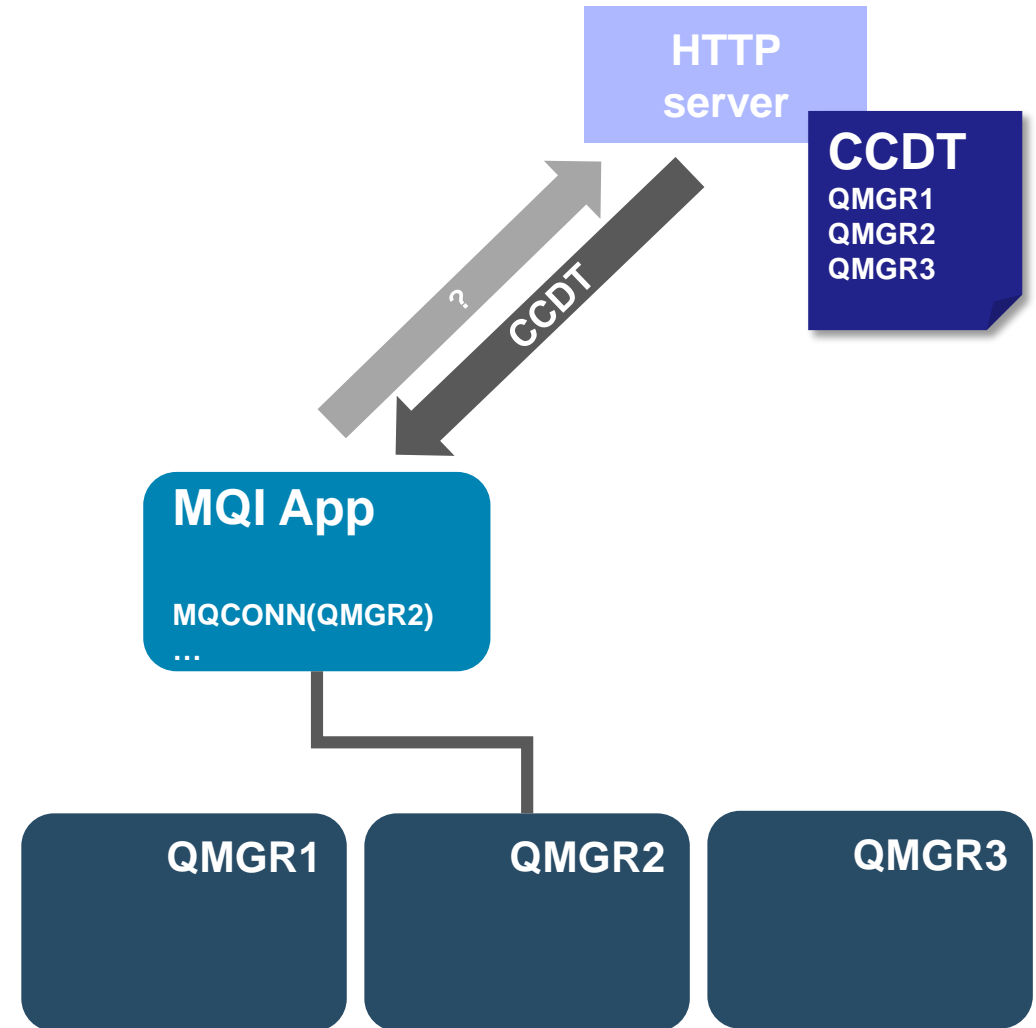
- Usually necessary to push the CCDT out to each client machine from a central point

Java and .Net clients have already been able to refer to CCDT via URI

Now also available for C clients to simplify provisioning

- Automatically retrieved from http or ftp address

- `export MQCCDTURL=http://ccdt.example.com/ccdt/MyApp.ccdt`



System topics on distributed queue managers

Distributed queue manager information is published to a range of system topic strings

\$SYS/MQ/INFO/QMGR/....

Authorised subscriptions receive their own stream of publications based on the topic string

Administrative subscriptions

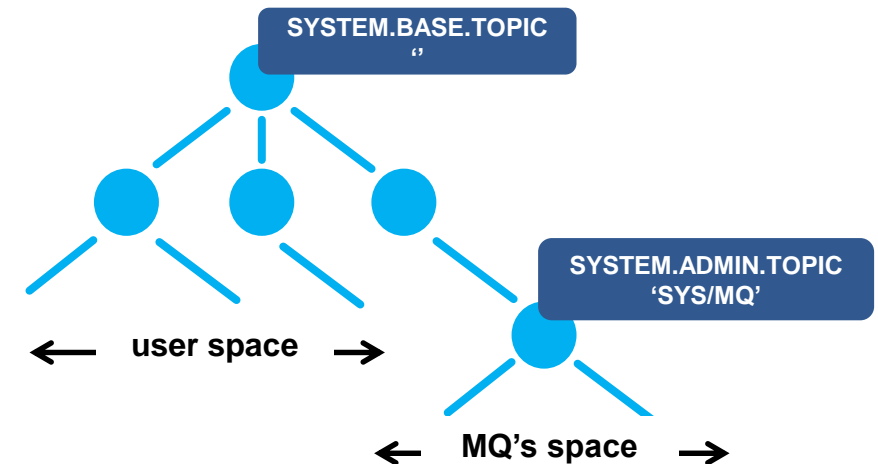
E.g. For information to be continually sent to defined queues

Application subscriptions

E.g. To dynamically listen to information as required

Unlocks system level information for MQ administrators and DevOps teams

Administrators can grant access to subsets of the data, pertinent to different application teams



Application Activity Trace

Application activity trace enabled through **subscriptions** rather than queue manager configuration

Subscribe to meta topics

E.g. `$$SYS/MQ/INFO/QMGR/QMGR1/...
ActivityTrace/AppName/amqspud`

Filter by application name, channel or connection id

When a subscription is created, PCF messages start to flow to the subscriber's queue. When the subscription is deleted, messages stop

Sample provided to demonstrate usage and format output – great for problem diagnosis

```
$ amqspud QUEUE1 QMGR1
Sample AMQSPUD0 start
target queue is Q1
Hello
World

Sample AMQSPUD0 end

$
```

```
$ amqsact -m QMGR1 -a amqspud -w 60
Subscribing to the activity trace topic:
 '$SYS/MQ/INFO/QMGR/QMGR1/ActivityTrace/AppName/amqspud'

MonitoringType: MQI Activity Trace
...
QueueManager: 'QMGR1'
ApplicationName: 'amqspud'
Application Type: MQAT_UNIX
...
=====
Tid Date      Time      Operation      CompCode      MQRC      HObj (ObjName)
-----
001 2016-04-14 09:56:53 MQXF_CONNX     MQCC_OK       0000      -
001 2016-04-14 09:56:53 MQXF_OPEN     MQCC_OK       0000      2 (QUEUE1)
001 2016-04-14 09:56:53 MQXF_PUT      MQCC_OK       0000      2 (QUEUE1)
001 2016-04-14 09:56:53 MQXF_PUT      MQCC_OK       0000      2 (QUEUE1)
001 2016-04-14 09:56:53 MQXF_CLOSE    MQCC_OK       0000      2 (QUEUE1)
001 2016-04-14 09:56:53 MQXF_DISC     MQCC_OK       0000      -
=====
```

System Monitoring

Familiar statistics available through subscriptions

Queue manager wide statistics (connects, disconnects, opens, closes, puts, gets, ...)

Queue level statistics (opens, closes, puts, gets, ...)

Extended to include CPU and Disk usage. For example...

Queue manager **CPU time**, **memory usage**

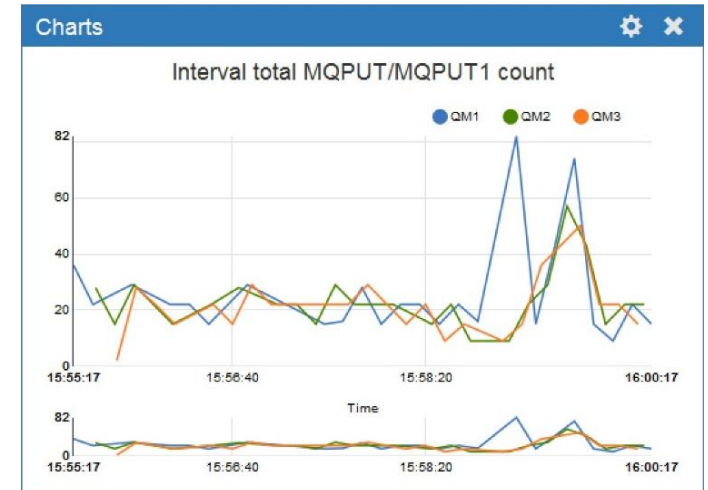
Disk reads/writes, **disk latency**,

Subscribe to meta-topic to learn which classes of statistics are available

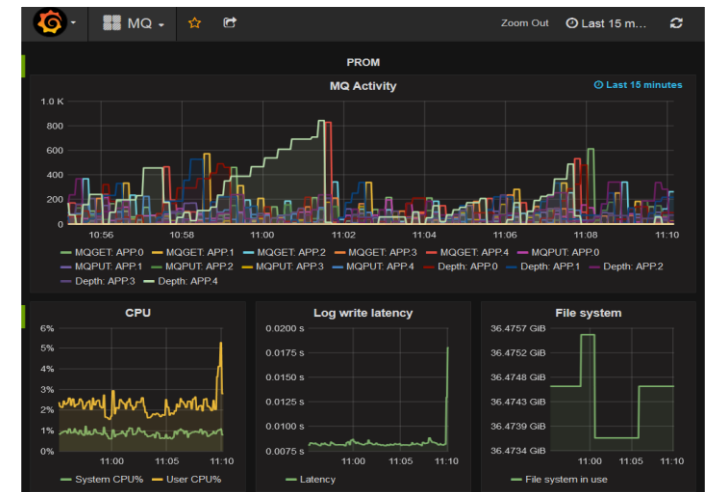
`$SYS/MQ/INFO/QMGR/QMGR1/Monitor/METADATA/CLASSES`

Then subscribe to specific topics

See `amqsrua` sample program



This capability already underpins the charting in the MQ Appliance WebUI



Or use the data to feed your own dashboard
See github.com/ibm-messaging/mq-golang



New MQ Java resource adaptor



WAS traditional V9

WAS traditional will contain an MQ V9 level resource adaptor

Previous level was MQ 7.1

Bringing with it the JMS 2.0 capabilities

The first time AMS support has been built into the WAS traditional RA, simplifying its configuration

Other application servers

New AMS capability for non-IBM JREs opens up AMS to a wide range of application servers with the MQ V9 resource adaptor

Command recall and editing for runmqsc on Unix! 😊

When running runmqsc on Unix/Linux platforms you can now use **cursor keys!**

- Up/down keys for command line recall

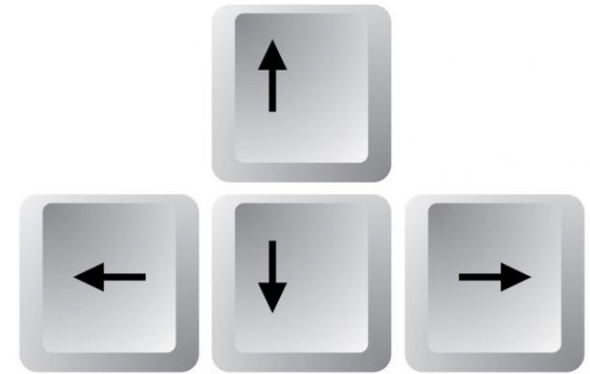
- Customisable for common editing control sequences (emacs/vi modes)

- Much easier to fix bad typing

Similar to what has always been available on Windows

With the added capability of command completion

- Hit TAB to cycle through and accept possible keywords



IBM MQ V9.0.1 CD

November 2016

Software MQ Web Console

In 2015 the IBM MQ Appliance introduced a [web based admin console](#). MQ 9.0.1 saw this across all CD platforms (Linux, z/OS, Windows)

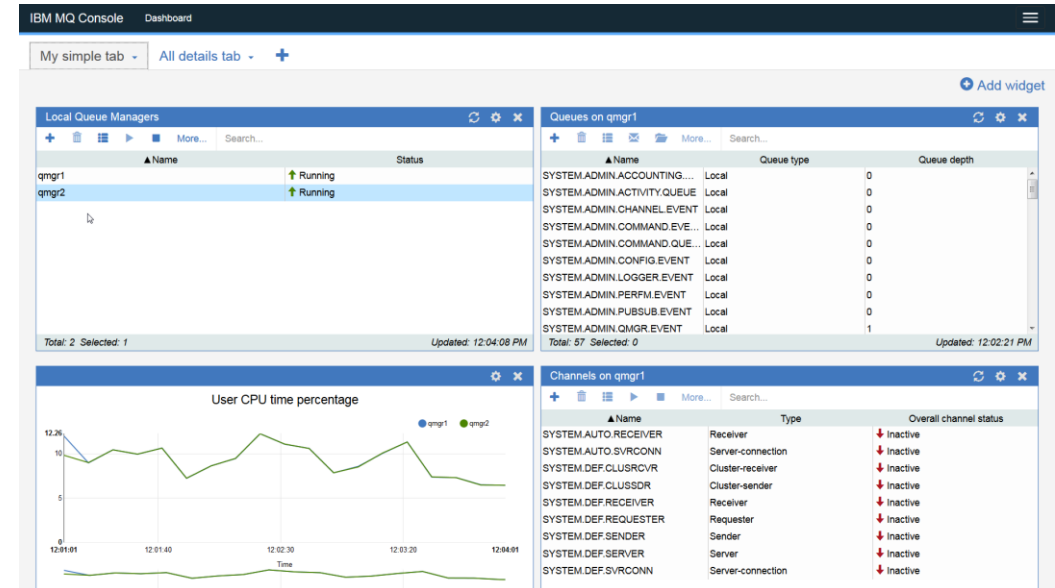
Point a browser at the MQ installation to create and manage queue managers and their resources

Provides a simple way to access MQ resources

Introducing new roles such as “read-only”

Will not see the full richness of capability from MQ Explorer

Targeted at each individual installation, not a network of MQ systems



First RESTful steps

MQ 9.0.1 introduced initial pieces of the RESTful administrative interface

The start of a new alternative to MQSC or PCF based administration

Enables web based administration

Simpler to get going and understand

Intuitive **URLs** and **JSON** payloads

Ability to query the MQ installation details and queue managers

Think *dspmqver* and *dspmqr*

Disabled by default, with no security

But remember, this is continuous delivery...

IBM REST API Documentation

Liberty REST APIs

Discover REST APIs available within Liberty

API Discovery : APIs available from the API Discovery feature

default

installation

- GET /ibmmq/rest/v1/installation: Retrieves details of all IBM MQ Installations on the target system
- POST /ibmmq/rest/v1/installation: Documented for completeness only - this operation will be rejected
- PUT /ibmmq/rest/v1/installation: Documented for completeness only - this operation will be rejected
- GET /ibmmq/rest/v1/installation/{instName}: Retrieves details of a specific IBM MQ Installation on the target system
- POST /ibmmq/rest/v1/installation/{qmgr}: Documented for completeness only - this operation will be rejected
- PUT /ibmmq/rest/v1/installation/{qmgr}: Documented for completeness only - this operation will be rejected

qmgr

- GET /ibmmq/rest/v1/qmgr: Retrieves details of all Queue Managers in this installation
- POST /ibmmq/rest/v1/qmgr: Documented for completeness only - this operation will be rejected
- PUT /ibmmq/rest/v1/qmgr: Documented for completeness only - this operation will be rejected

```
$ curl http://localhost:9080/ibmmq/rest/v1/qmgr
```

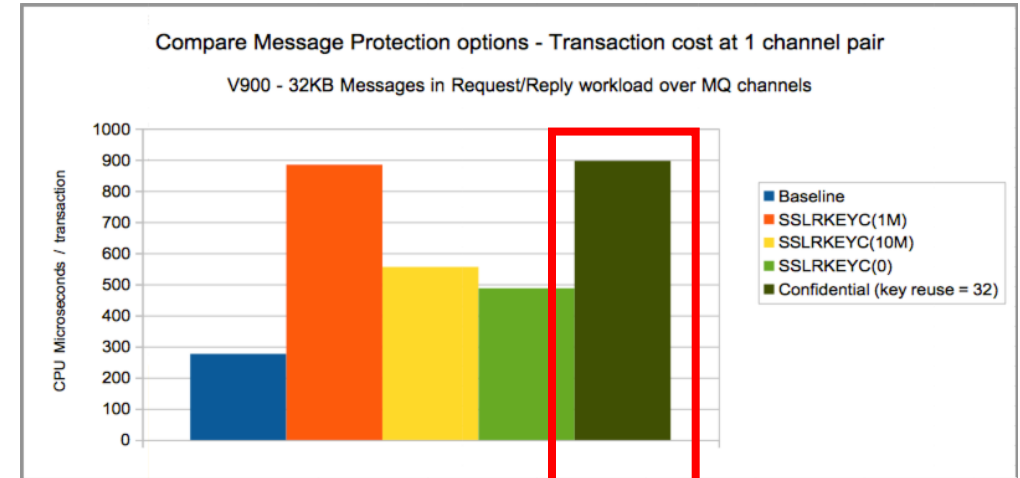
```
{ "qmgr": [  
  {  
    "qmgrName": "QM901A",  
    "status": "running"  
  },  
  {  
    "qmgrName": "QM901B",  
    "status": "endedImmediately"  
  }  
]
```

Advanced Message Security – even better on z/OS

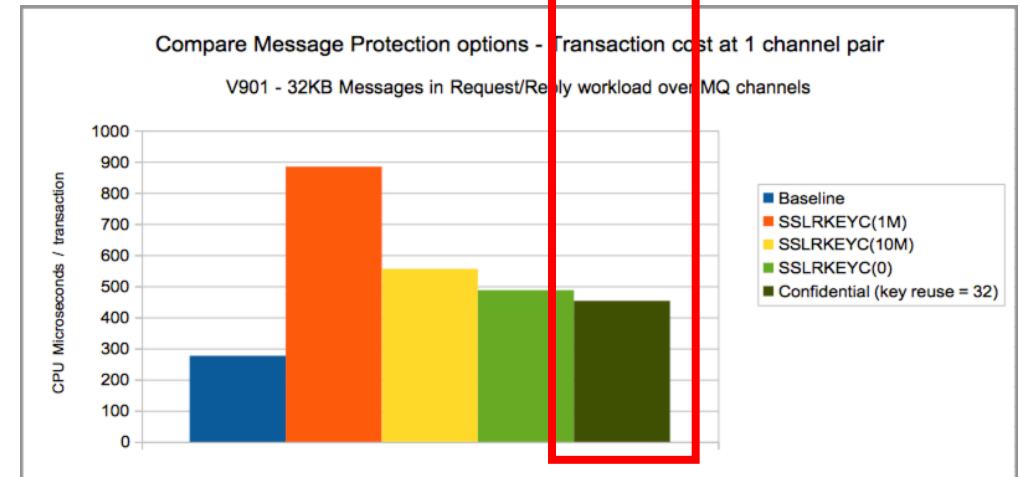
Further performance enhancements to the Confidentiality profile on z/OS

AMS Confidentiality reaches CPU cost parity with moving messages across a TLS channel

Acceptable cost for encryption at rest



MQ for z/OS 9.0.0



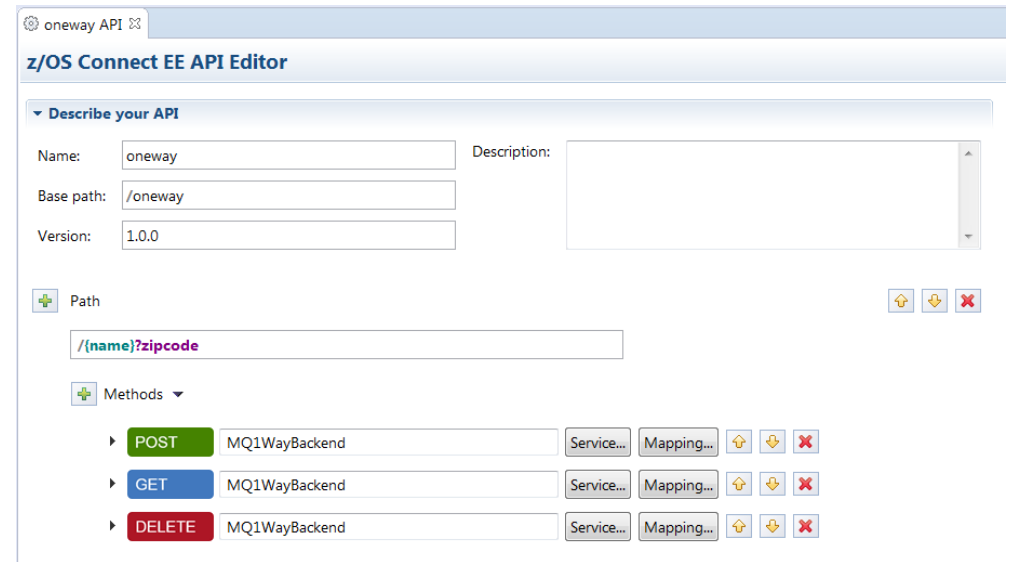
MQ for z/OS 9.0.1

z/OS Connect: MQ Service Provider

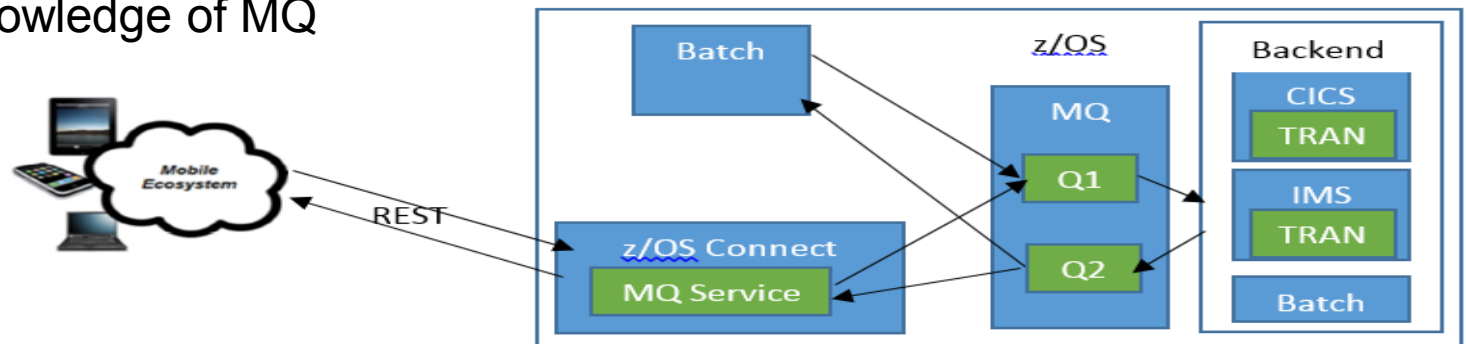
z/OS Connect is about exposing mainframe resources to applications via a modern REST and JSON interface in a way that enables developers to rapidly take advantage of the assets that exist there.

The MQ Service Provider allows existing services that are fronted by MQ to be accessed via a RESTful front end

- Both z/OS Connect V1 and zCEE are supported
- Same MQ capabilities in both versions
- zCEE API editor can be used with MQ



Client's applications need have no knowledge of MQ



MQ JMS in CICS Liberty Profile

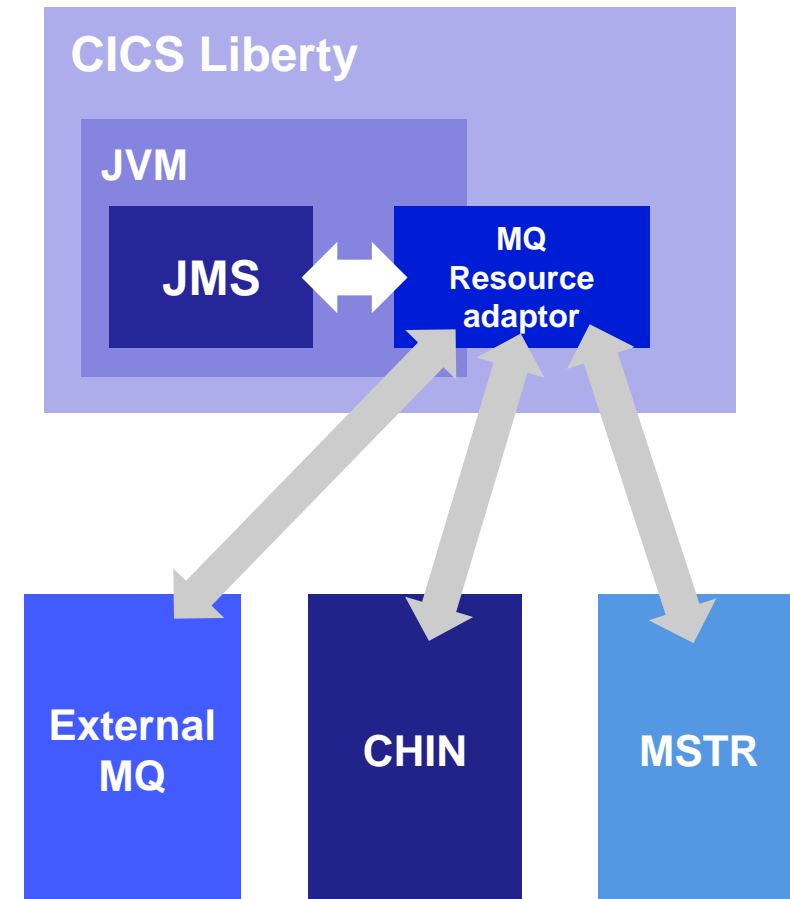
Allow CICS Liberty to use MQ resource adapter

Just like normal Liberty

Run existing Liberty messaging apps such as MDBs inside CICS

Connections to MQ supported using either client or bindings mode

Prereqs CICS V5.3 +PI58375 + MQ 9.0.1 RA



IBM MQ V9.0.2 CD

March 2017

NEW!

MQ REST continues to grow

REST is enabled and secured as part of the web setup

Security

- Secured by default, samples provided to make setup simple
- Caller can either login via userid & password or certificate
- Or use HTTP basic-authentication
- CORS support added when called from a web-browser

More commands added for 9.0.2

Queue definitions

Create, delete, display and alter

Display queue status

```
C:\Program Files\IBM\Latest902\bin>curl -k "https://localh
{"queue": [{"
  "name": "Q.LOCAL",
  "status": {
    "currentDepth": 0,
    "lastGet": "",
    "lastPut": "",
    "mediaRecoveryLogExtent": "",
    "monitoringRate": "off",
    "oldestMessageAge": -1,
    "onQueueTime": {
      "longSamplePeriod": -1,
      "shortSamplePeriod": -1
    },
    "openInputCount": 0,
    "openOutputCount": 0,
    "uncommittedMessages": 0
  },
  "type": "local"
}]}
```

Distributed recovery logs

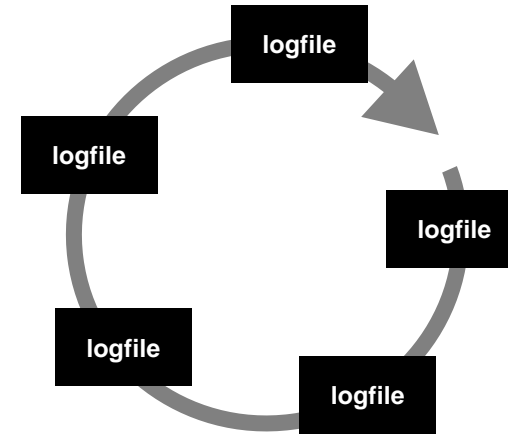
MQ always logs all the data you need to recover from a queue manager failure in a recovery log

Restart recovery (circular and linear logging)

Enough information held in the log files to rebuild MQ resources to the level that they were at prior to the queue manager stopping

Media recovery (linear logging only)

Enough information held in the log files to rebuild MQ resources in the event of losing or corrupting MQ data



Circular logging



Linear logging

Significantly reducing the overheads of linear logging

Automatic Media Imaging

Media images allow logs to be archived or reused, reducing space and speeding up recovery time

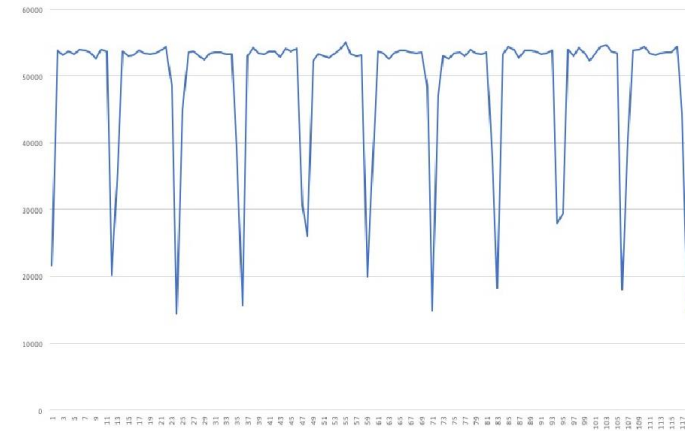
Previously this was up to the administrator

New ability for the queue manager to **automatically schedule** the recording of media images

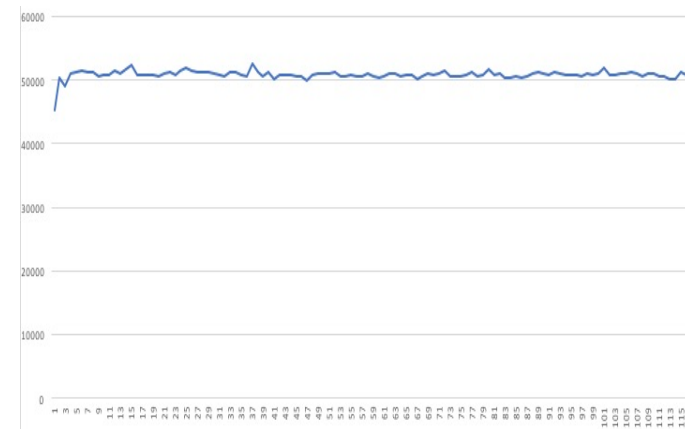
The frequency of imaging can be controlled based on **time interval** or **data written**

New ability to exclude certain objects from media recovery logging to reduce overheads

Queue manager controlled imaging **reduces the impact on other workload** during recording



Manually controlled recording



Queue manager controlled recording

Significantly reducing the overheads of linear logging

Automatic log reuse

Linear log extents must be removed from the system to free up space

You may choose to archive them before deleting

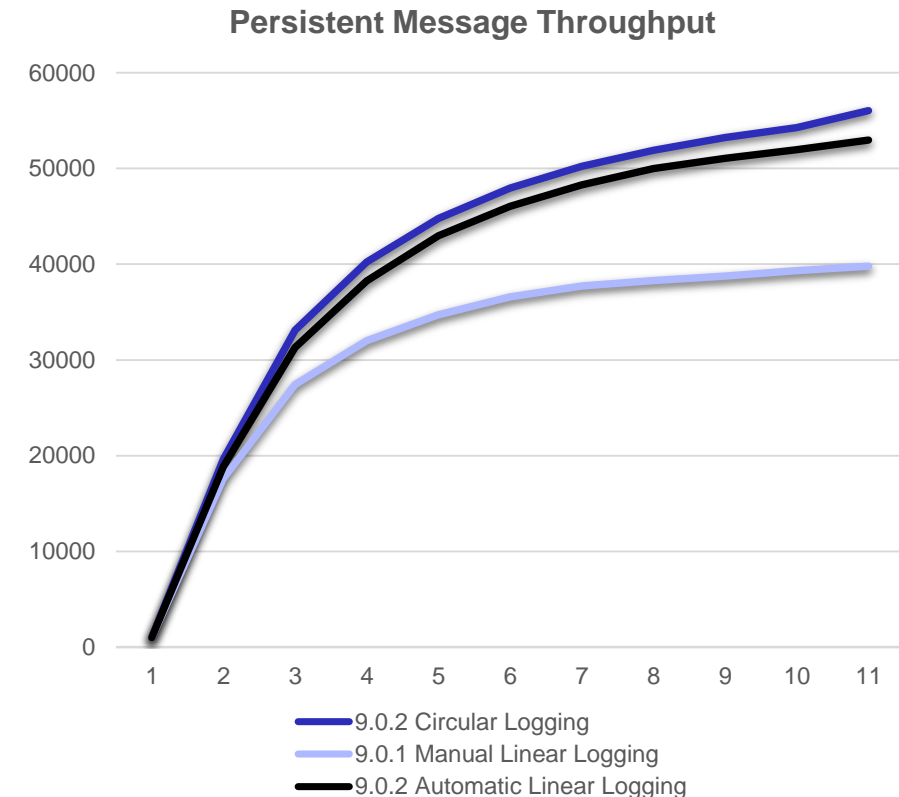
You can now create a queue manager where **log extents are automatically reused** as soon as they are no longer required for media recovery

Alternatively they can be automatically reused when no longer required and have been marked as archived

Significant performance improvements over user managed linear logging, comparable to circular logging

And in general

Extra information added to queue manager status on log utilization to aid better log configurations

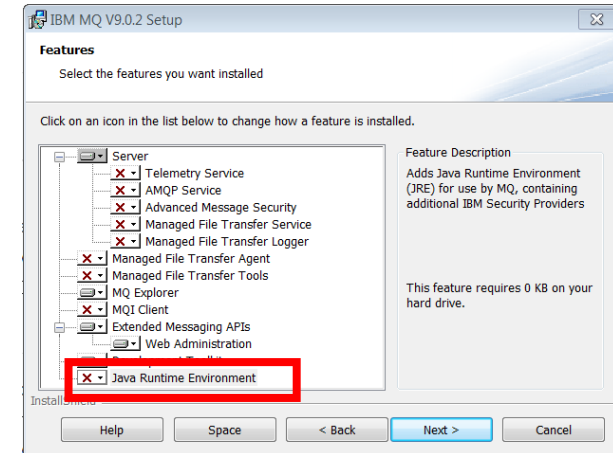


New install options

JRE is now an optional install component on Windows

For those installations where the bare minimum is needed

If not selected then dependant components such as MQWeb, MQExplorer, etc will not get installed



MQ packages available in Debian installer format on Ubuntu

More natural for Ubuntu users

Available on all three supported architectures (amd64, s390x, ppc64el)

Installs to default location

Will replace RPMs on Ubuntu



IBM Cloud Product Insights

IBM has just launched the IBM Cloud Product Insights Bluemix service

Product Insights enhances the way IBM on-premise products can be registered and tracked, organizations can extend on-premise products achieving the benefits of cloud environments.

IT administrators can register on-premise traditional IBM Enterprise Software and create an inventory to track each instance, report on usage metrics, and get advice on other cloud services.

Enables you to connect to the IBM cloud for new insights on your on-prem environment and guidance for cloud service patterns



What does that mean for you and MQ?

Registration and Usage

Users register instances of their IBM products with a central IBM cloud hosted service

Keeps track in a single place which queue managers you have

- What level of MQ

- What is installed

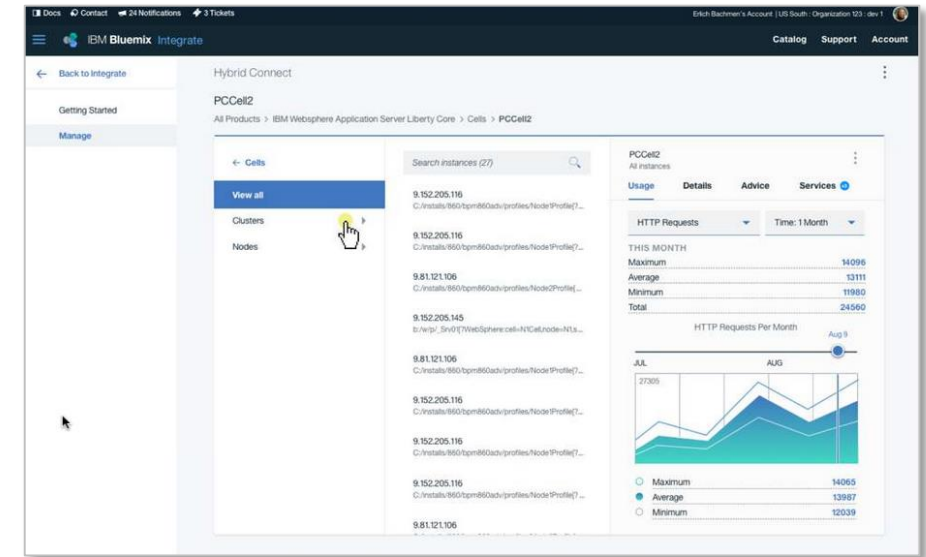
- When they were last running

High level usage information is regularly collected to give a high level overview of the system usage and any trends

- How many persistent and non-persistent messages put

- How many persistent and non-persistent bytes put

- Giving a very high level overview of the system usage.



What does that mean for you and MQ?

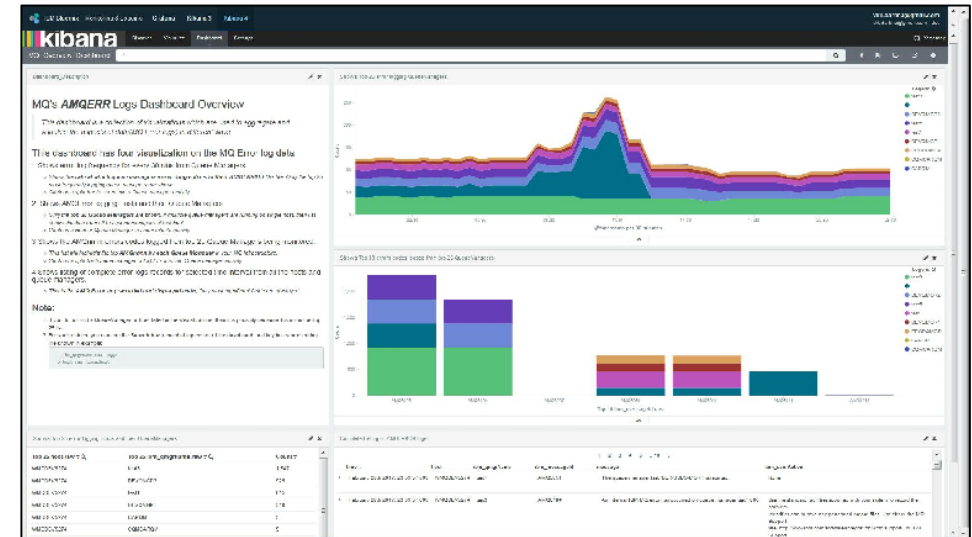
Log Management *beta*

Registered queue managers forward **error logs** to the Product Insights service
Using the IBM Logmet service based on ELK

Provides a central place from which to aggregate and view all of your IBM product logs

Preconfigured and customisable dashboards provided

Opportunities for centralised analysis across multiple logs and products



IBM MQ Appliance

MQ in a box

The IBM MQ Appliance

The scalability, security and reliability of IBM MQ

The convenience, fast time-to-value and low total cost of ownership of an appliance

Built in high availability and disaster recovery capabilities

Ideal for use as a messaging hub running queue managers accessed by clients, or to extend MQ connectivity to a remote location

Familiar feel for existing MQ users – application interfaces, administration, networking/clustering, security....



MQ Appliance high availability and disaster recovery

Fully built-in HA and DR capabilities

No external components required

Per queue manager active/passive topologies

High availability (HA)

Short distance configurations

All recoverable data replicated immediately

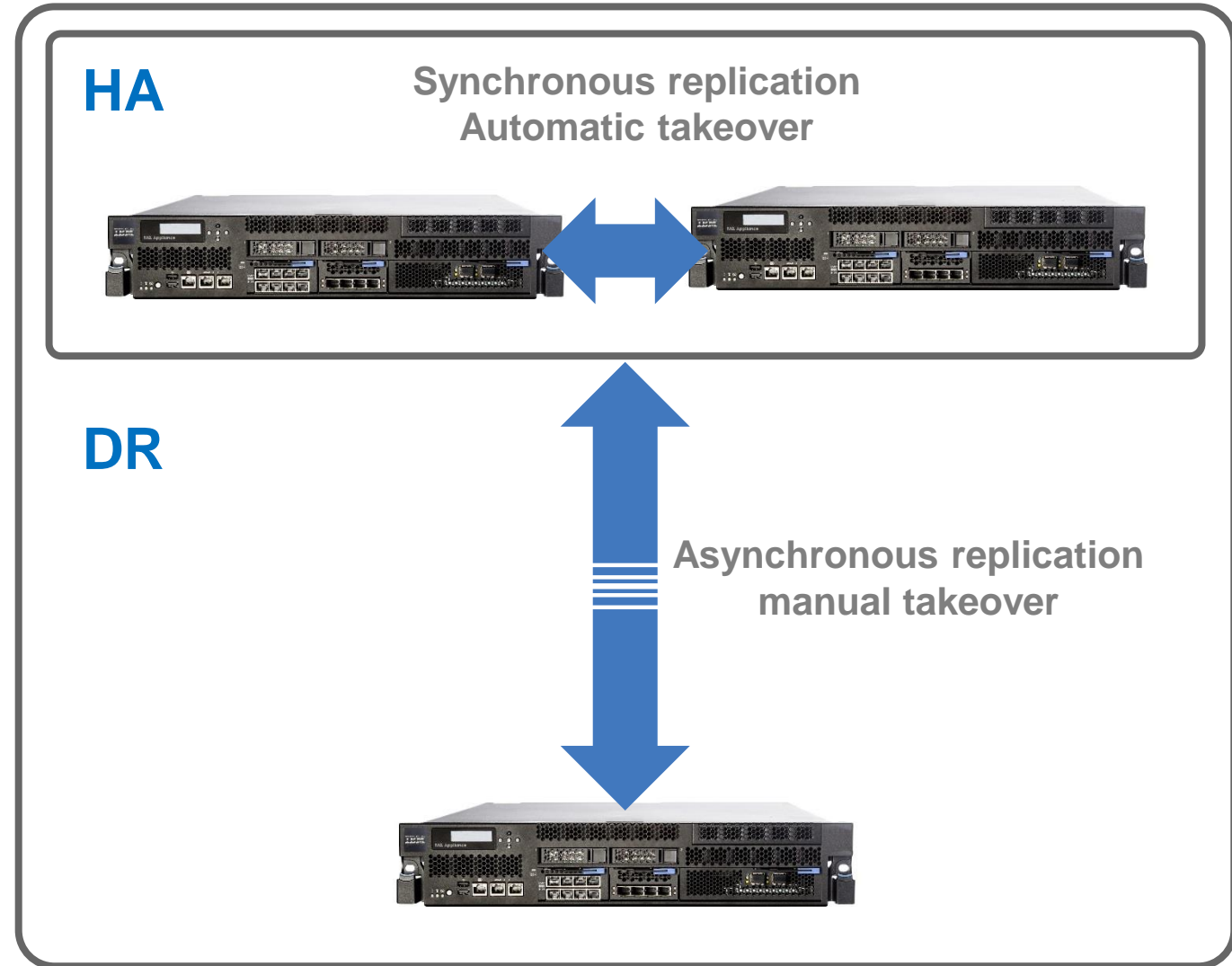
Failures automatically detected and queue managers restarted

Disaster recovery (firmware update 4)

Long distance configurations

Manual queue manager takeover

Combined HA and DR (firmware update 5)



Hardware updated in June 2016 to the M2001

Original 1.2TB HDDs replaced with 3.2TB SSDs

A potential 3x performance gain for heavily persistent workloads



10GB network ports extended from 2 to 4

For combined HA and DR configurations two 10GB ports are required

Leaving two 10GB ports for messaging traffic

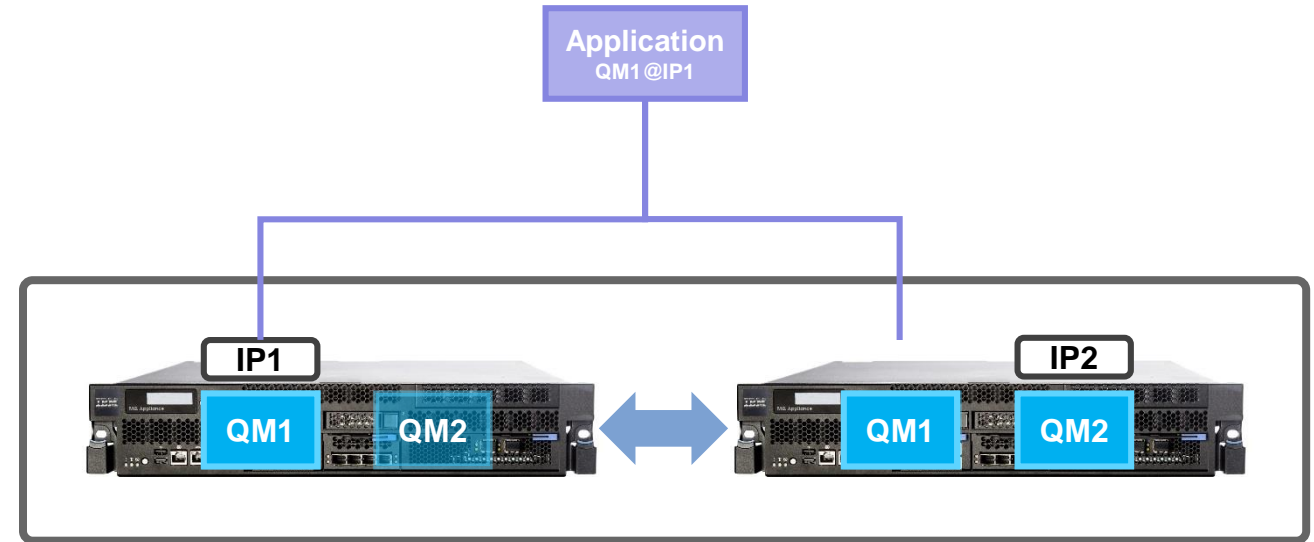
Firmware update: MQ 9.0.1 CD

Floating IP support

In version 8 of the MQ Appliance, clients connecting to HA queue managers must be aware of all possible IP addresses (e.g. via comma separated list or CCDT)

Each HA queue manager can now be associated with a **floating IP address** which is automatically adopted by whichever appliance the the queue managers is currently active on

Client applications are now able to use a single IP address, requiring no changes on the application side.



Firmware update: MQ 9.0.1 CD

SNMP

Full support of SNMP for remote monitoring and alerting of MQ Appliances
SNMP data on the appliance itself and the queue managers running on it

RESTful Administration

Enablement of appliance administration over REST

Administrative Security

New options for managing the authentication and roles granted to appliance administrators

Backup and Restore

Ability to backup and restore queue manager data and configuration

Automatic Queue Manager start-up

Now all queue managers, not just those under HA control can be started automatically on start-up of an appliance



Firmware update: MQ 9.0.2 CD

HA SSH key renewal

Appliances in a HA group use SSH keys for internal communication

Keys are not exposed to users. However, security best practice recommends periodically regenerating SSH keys

New capability introduced to allow administrators to do this without disrupting the HA system

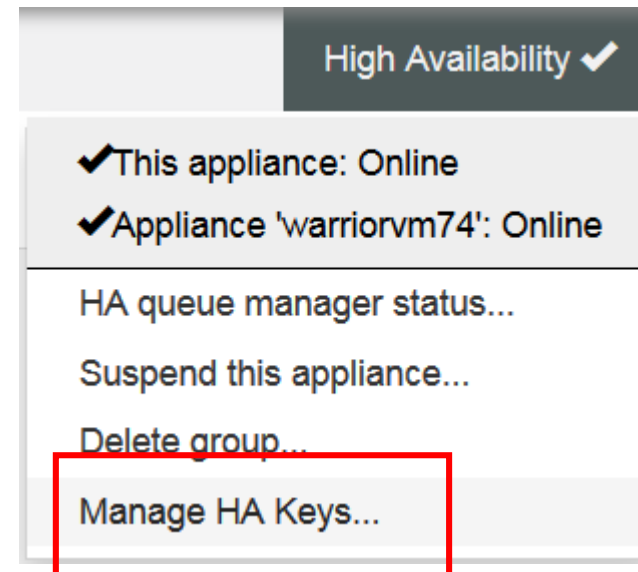
MQ RESTful admin API

9.0.1 added RESTful admin for the appliance itself

9.0.2 adds RESTful support for the queue managers running on the appliance

The appliance sees the same RESTful API for administering MQ resources as added to software MQ

Uses the same user authority model and roles as for software MQ



```
mqa(mqcli)# crthakeys
The crthakeys command succeeded.

mqa(mqcli)# dsphakeys
SSH key generation time: 2017-02-13 16:47:55
```

IBM MQ Managed File Transfer

Managed File Transfer

MQ 9.0.0.0 LTS

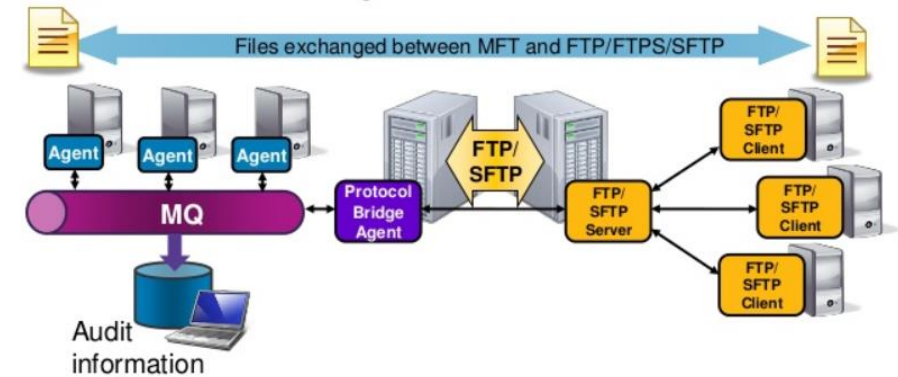
Comprehensive fine grain coverage of FTP errors
Enhanced logging of FTP communications for post diagnosis

MQ 9.0.1 CD

Redistributable MFT agent available from FixCentral, users simply download and unzip
File transfer recovery timeout control, new option to automatically cancel failing transfers

MQ 9.0.2 CD

MFT agent status reporting, aids problem diagnosis by reporting last contact time



MFT Agents are now no longer separately and individually licensed but are **free** to deploy and use when connected to **MQ Advanced** entitled queue managers

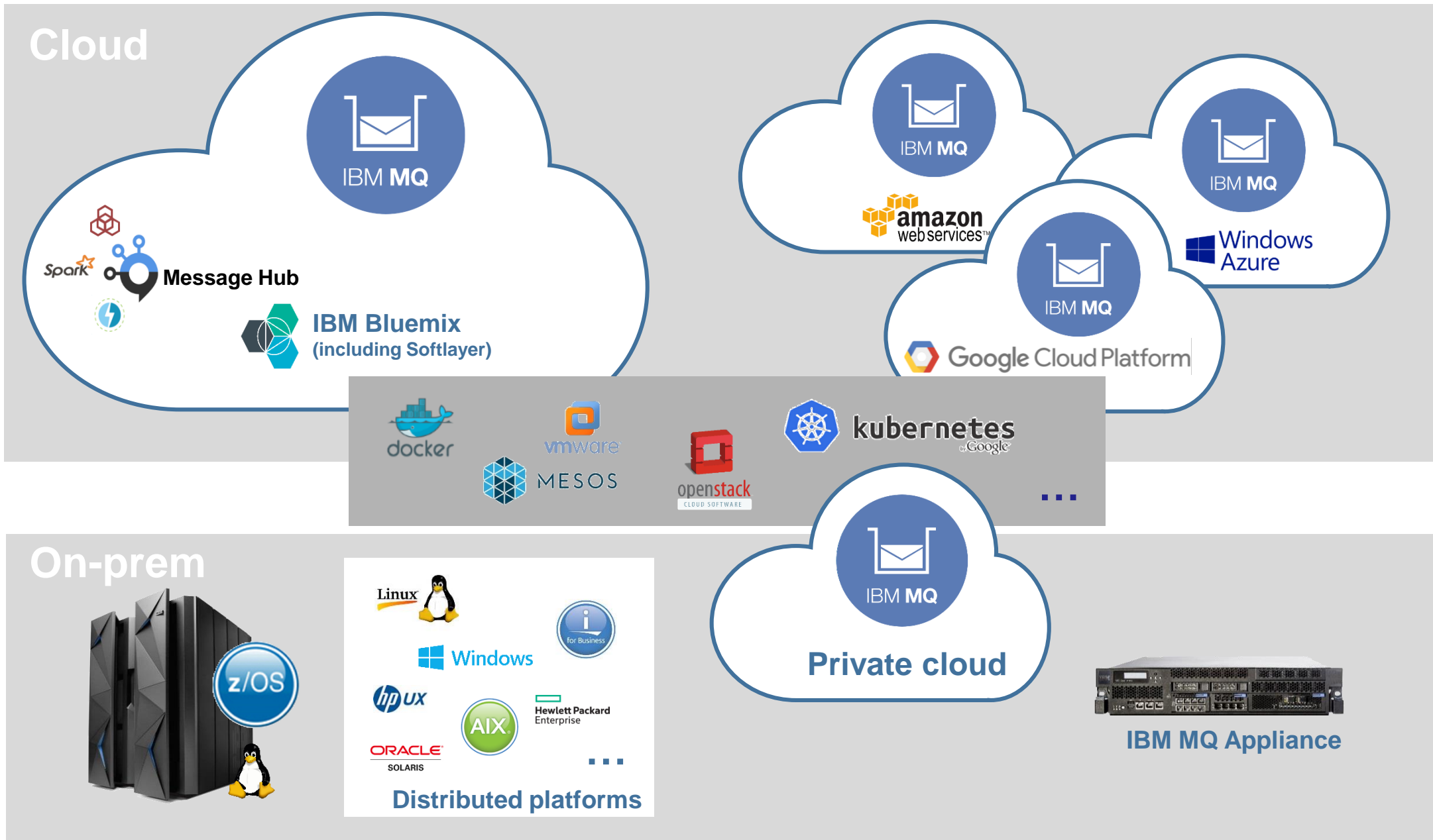
IBM MQ in the Cloud

IBM MQ in the Cloud

IBM MQ in the Cloud

IBM MQ in the Cloud

Run MQ, exactly how and where you need it



Help and advice with MQ in the Cloud

It has always been critical for MQ to run where it is needed and integrated into the tools of your choice

For many that means **clouds**

We have investigated running MQ in various **public** and **private** clouds.

Using a variety of tooling for provisioning, configuration and monitoring

And we've been sharing that information to everyone to use

IBM developerWorks > Developer Centers Marketplace

IBM Messaging Products Downloads Videos Sample Code Blogs Docs Get Help

Feedback on our new design? Email us

All IBM MQ MQ on Distributed MQ Appliance MQ on z/OS MQ on Cloud

MQ started life in the data center but you can now take the many benefits of IBM MQ to the cloud. It's security, robustness and integration capabilities. And by doing this you'll also reap the benefits that a cloud deployment brings, whether it's automated deployments, scalable architecture, centralised administration. If you're running MQ in a cloud environment, visit the MQdev blog to see examples of how to run IBM MQ on AWS, Azure, OpenStack and Docker. You can also see examples of how to centralize key MQ metrics and MQ error logs.

Latest AWS blog updates

- IBM MQ - Using Active Directory for authorisation in Unix queue managers
- IBM MQ - Using AWS CloudWatch to monitor queue managers
- MQ on AWS: Sending MQ error logs to CloudWatch
- MQ on AWS: PoC of high availability using EFS
- Basic deployment of MQ on AWS

Latest OpenStack blog updates

- MQ on OpenStack, part three: Automated client connection PoC using MQ v9 CCDT URL feature.
- MQ on OpenStack, part two: Managing an MQ environment using Heat
- MQ on OpenStack, part one: Creating an image using Packer

Latest Docker blog updates

- MQ in Docker is now supported for production use
- Introducing a Docker image for MQ Advanced for Developers

Latest Error logging blog updates

- MQ on AWS: Sending MQ error logs to CloudWatch
- Sending MQ error logs to the Bluemix Logmet service
- Storing and searching MQ error logs in Elasticsearch

Latest Monitoring blog updates

- Sending MQ metrics to the Bluemix Logmet service
- IBM MQ - Further integration with open-source monitors
- IBM MQ - Using Prometheus and Grafana to monitor queue managers

GitHub Repositories

- AWS
- Azure
- OpenStack
- Docker

Useful links

Downloads Blogs Sample Code Get Help

Contact Privacy Terms of use Accessibility Feedback Cookie preferences United States - English

<https://developer.ibm.com/messaging/mq-on-cloud/>



MQ in Docker containers

IBM MQ is supported to run inside Docker containers, bringing the benefits of containers to MQ

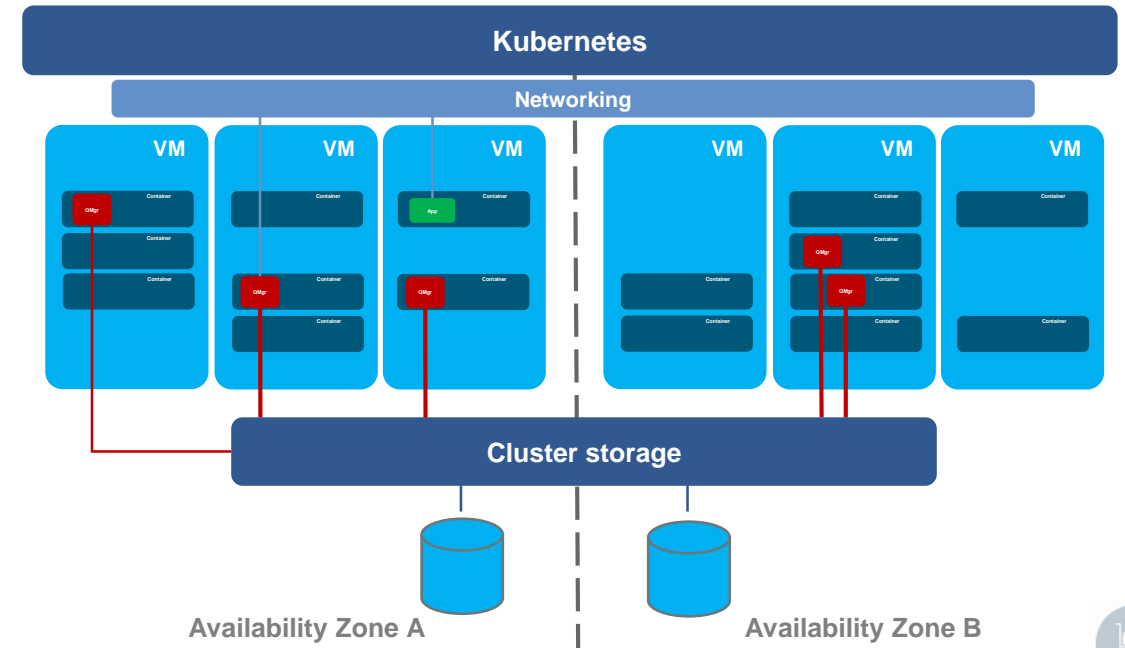
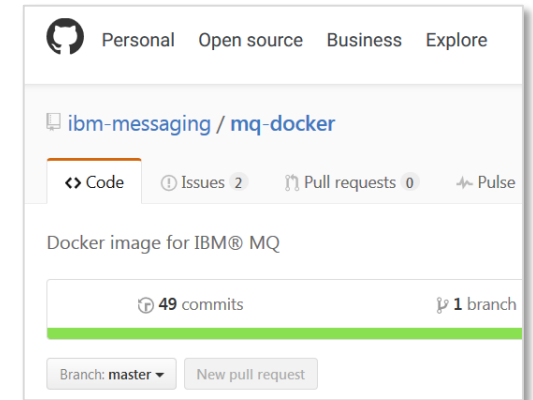
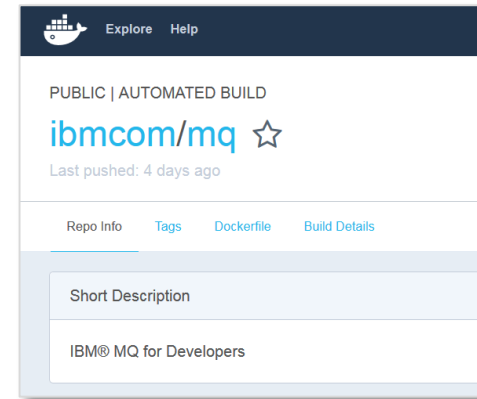
- Lightweight containers for running MQ
- Predictable and standardized units for deploying MQ
- Process, resource and dependency isolation
- Best practice guidance

IBM provided sample Docker files for customizing and building your own Docker images

IBM MQ Advanced for Developers V9 available direct from Docker Hub

Docker enables MQ deployments to be provisioned and managed within the same orchestration frameworks that make Docker so exciting

- Kubernetes, Mesos, Swarm, Fleet, ...
- Or individual IaaS cloud container services
- Bluemix, Amazon EC2, Azure, ...

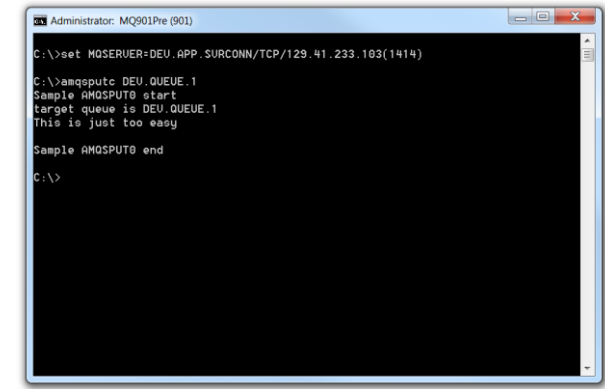
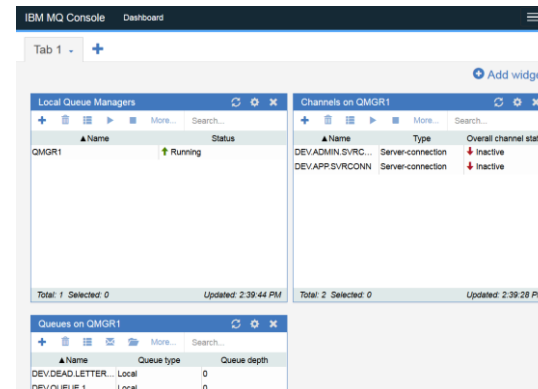
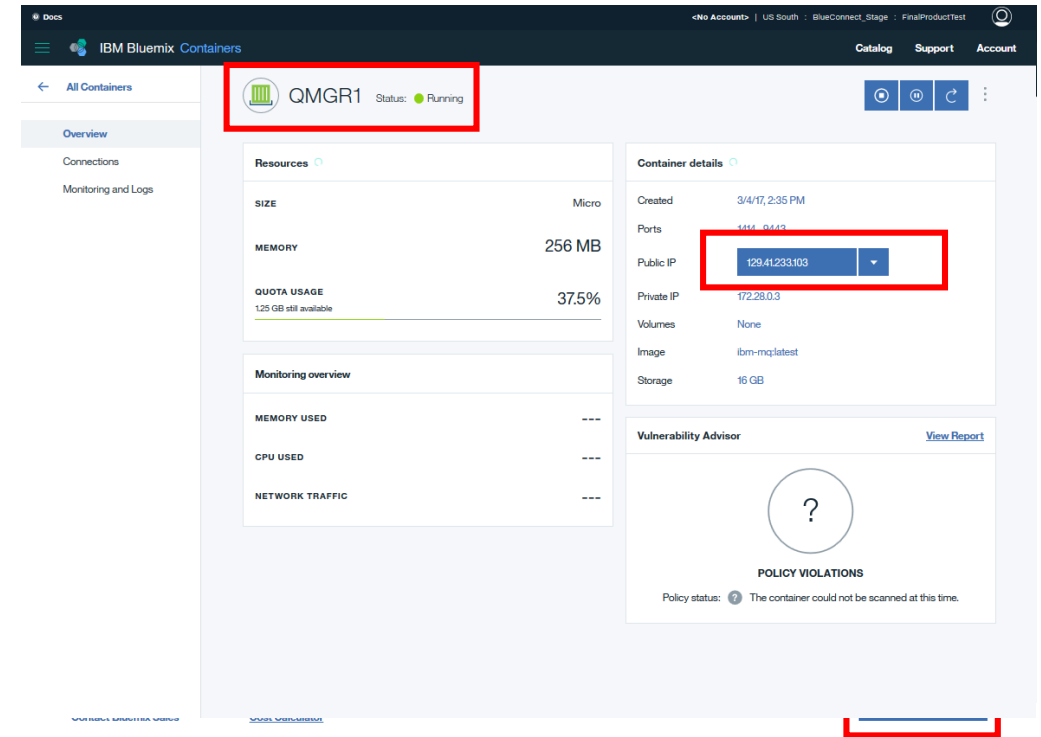


MQ Advanced for Developers in the Bluemix Container Service

It is now possible to spin up MQ queue managers in the Bluemix Container Service with a couple of clicks

The fastest way to get up and running with MQ for development and experimentation

Pre-configured defaults mean instant access for administration and messaging applications



Message Hub Bridge

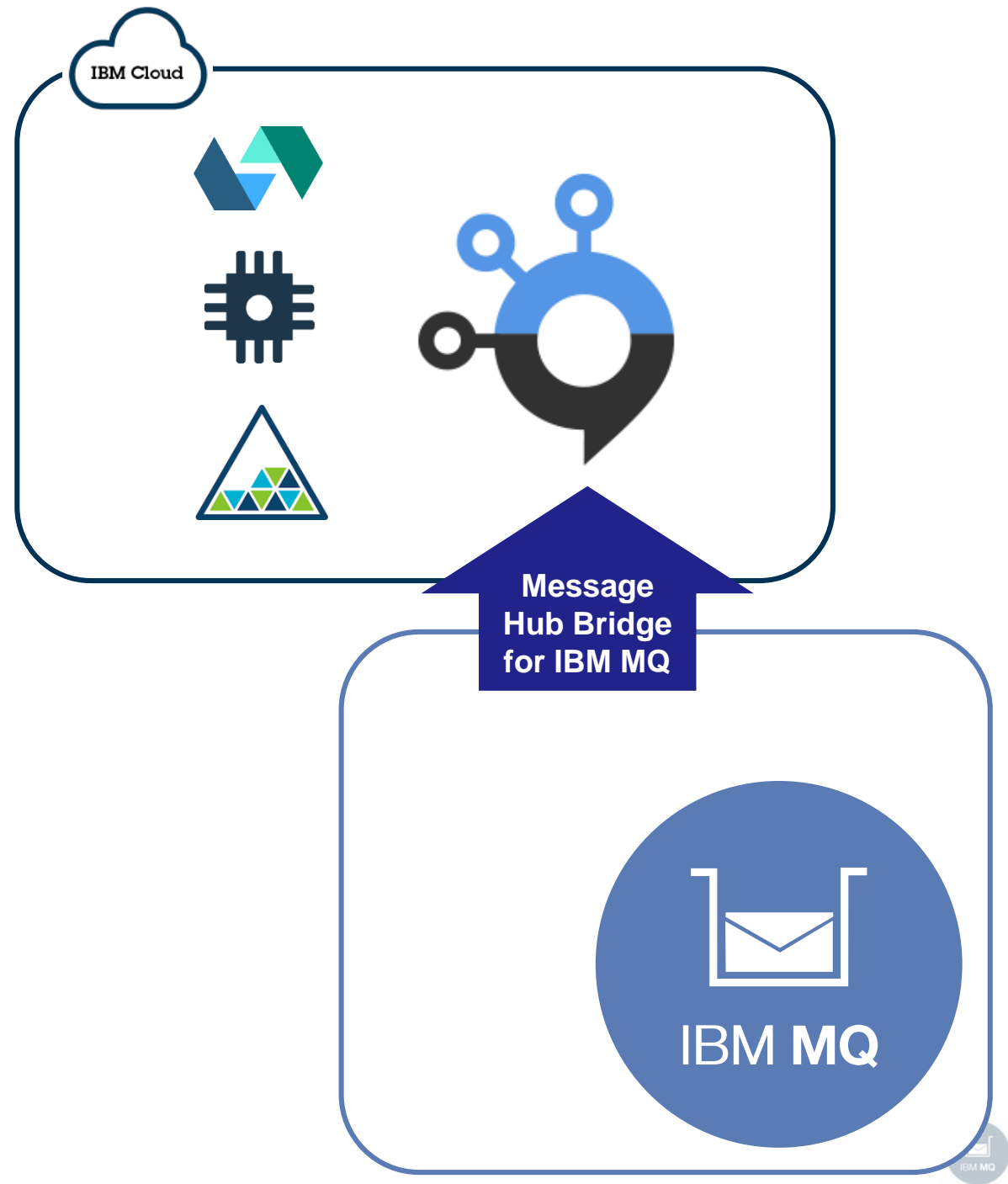
Message Hub is a scalable messaging service for **IBM Bluemix**. Based on Apache Kafka and ideally suited for streaming analytics

You can use the **new MQ Bridge** capability to connect your MQ network to your Message Hub service in Bluemix, enabling the flow of MQ message data into your Bluemix applications

Connects to MQ as an MQI client

At-least-once reliability (as expected by Kafka)

Data partitioned into Kafka topics



MQ Bridge for Salesforce

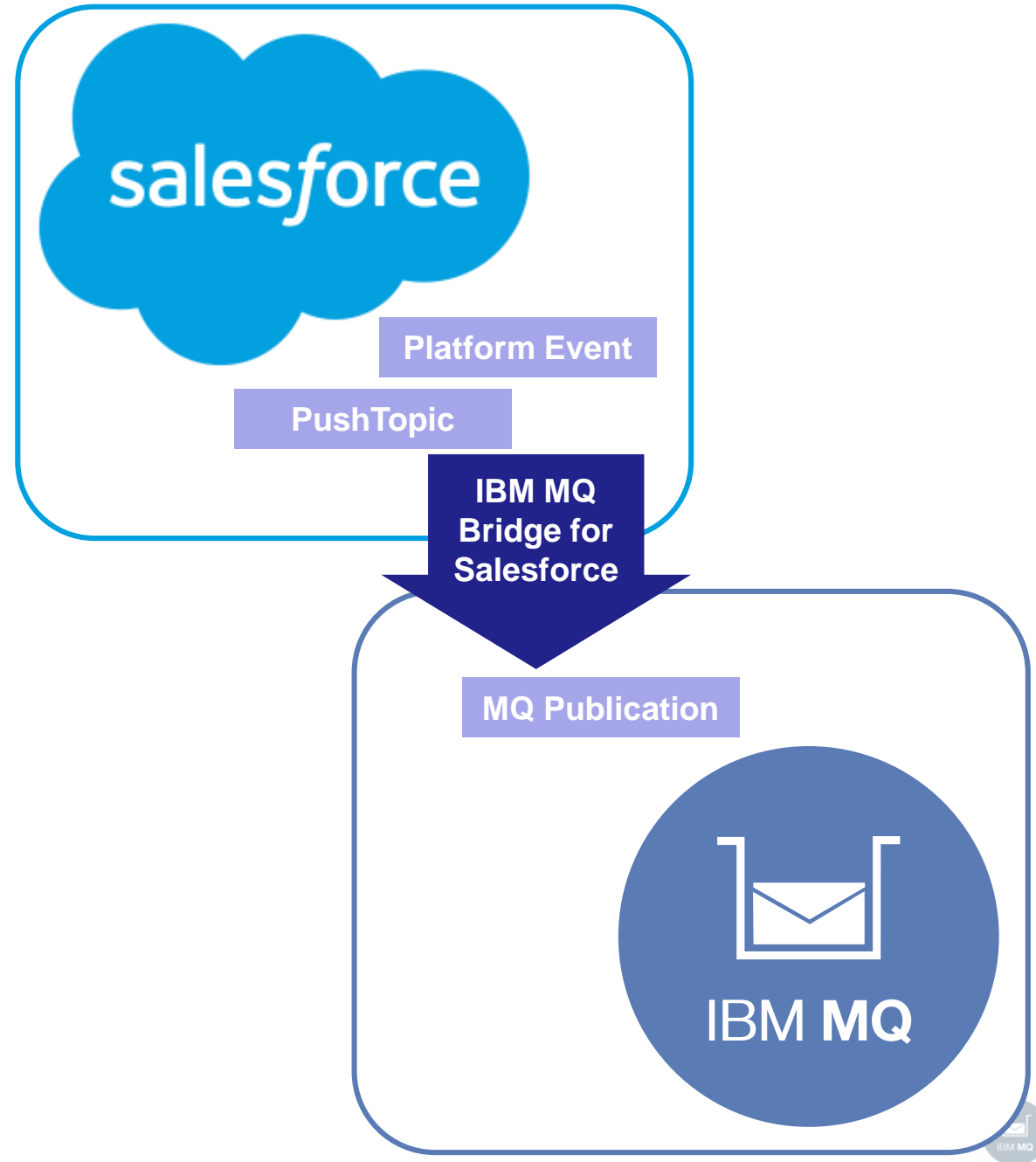
Salesforce's cloud-based CRM platform enables events to be emitted when changes are made to data, or when applications run

You can inject these Salesforce events into your own systems using the new MQ Bridge for Salesforce with no need for your backend applications to connect to Salesforce

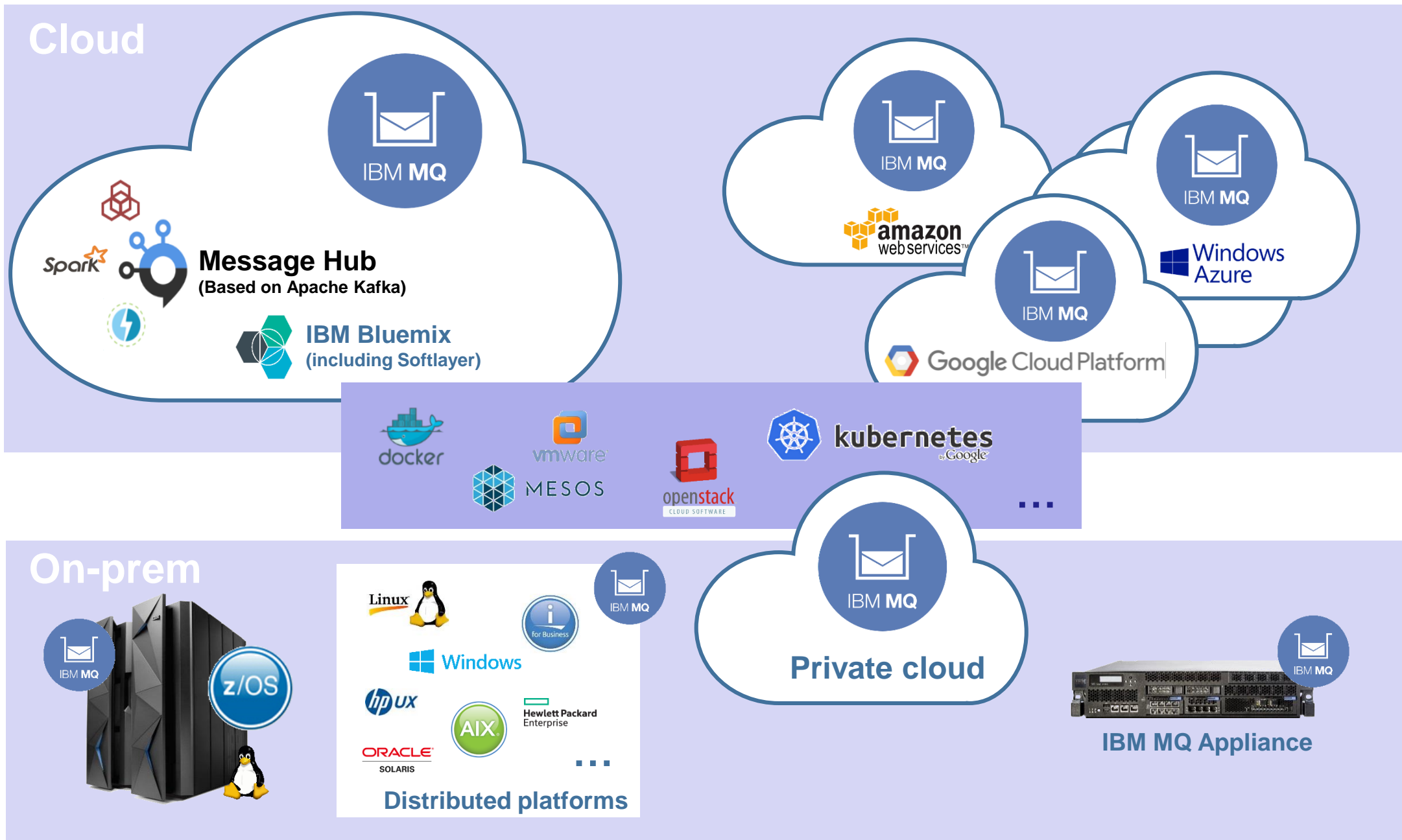
Supports Salesforce Platform Events and PushTopics

Events are published into the MQ network

The bridge runs on Linux, but connects to any queue manager and is enabled for monitoring with system topic metrics



Run MQ, exactly how and where you need it



Thank you

IBM Messaging Developer Centre
developer.ibm.com/messaging

IBM Messaging Youtube
www.youtube.com/IBMmessagingMedia

LinkedIn
ibm.biz/ibmmessaging

Twitter
[@IBMmessaging](https://twitter.com/IBMmessaging)

IBM MQ Facebook
facebook.com/IBMMQ



IBM

Notices and disclaimers

Copyright © 2017 by International Business Machines Corporation (IBM). No part of this document may be reproduced or transmitted in any form without written permission from IBM.

U.S. Government Users Restricted Rights — use, duplication or disclosure restricted by GSA ADP Schedule Contract with IBM.

Information in these presentations (including information relating to products that have not yet been announced by IBM) has been reviewed for accuracy as of the date of initial publication and could include unintentional technical or typographical errors. IBM shall have no responsibility to update this information. **This document is distributed “as is” without any warranty, either express or implied. In no event shall IBM be liable for any damage arising from the use of this information, including but not limited to, loss of data, business interruption, loss of profit or loss of opportunity.** IBM products and services are warranted according to the terms and conditions of the agreements under which they are provided.

IBM products are manufactured from new parts or new and used parts. In some cases, a product may not be new and may have been previously installed. Regardless, our warranty terms apply.”

Any statements regarding IBM's future direction, intent or product plans are subject to change or withdrawal without notice.

Performance data contained herein was generally obtained in a controlled, isolated environments. Customer examples are presented as illustrations of how those customers have used IBM products and

the results they may have achieved. Actual performance, cost, savings or other results in other operating environments may vary.

References in this document to IBM products, programs, or services does not imply that IBM intends to make such products, programs or services available in all countries in which IBM operates or does business.

Workshops, sessions and associated materials may have been prepared by independent session speakers, and do not necessarily reflect the views of IBM. All materials and discussions are provided for informational purposes only, and are neither intended to, nor shall constitute legal or other guidance or advice to any individual participant or their specific situation.

It is the customer's responsibility to insure its own compliance with legal requirements and to obtain advice of competent legal counsel as to the identification and interpretation of any relevant laws and regulatory requirements that may affect the customer's business and any actions the customer may need to take to comply with such laws. IBM does not provide legal advice or represent or warrant that its services or products will ensure that the customer is in compliance with any law.

Notices and disclaimers continued

Information concerning non-IBM products was obtained from the suppliers of those products, their published announcements or other publicly available sources. IBM has not tested those products in connection with this publication and cannot confirm the accuracy of performance, compatibility or any other claims related to non-IBM products. Questions on the capabilities of non-IBM products should be addressed to the suppliers of those products. IBM does not warrant the quality of any third-party products, or the ability of any such third-party products to interoperate with IBM's products. **IBM expressly disclaims all warranties, expressed or implied, including but not limited to, the implied warranties of merchantability and fitness for a particular, purpose.**

The provision of the information contained herein is not intended to, and does not, grant any right or license under any IBM patents, copyrights, trademarks or other intellectual property right.

IBM, the IBM logo, ibm.com, Aspera[®], Bluemix, Blueworks Live, CICS, Clearcase, Cognos[®], DOORS[®], Emptoris[®], Enterprise Document Management System[™], FASP[®], FileNet[®], Global Business Services[®], Global Technology Services[®], IBM ExperienceOne[™], IBM SmartCloud[®], IBM Social Business[®], Information on Demand, ILOG, Maximo[®], MQIntegrator[®], MQSeries[®], Netcool[®], OMEGAMON, OpenPower, PureAnalytics[™], PureApplication[®], pureCluster[™], PureCoverage[®], PureData[®], PureExperience[®], PureFlex[®], pureQuery[®], pureScale[®], PureSystems[®], QRadar[®], Rational[®], Rhapsody[®], Smarter Commerce[®], SoDA, SPSS, Sterling Commerce[®], StoredIQ, Tealeaf[®], Tivoli[®] Trusteer[®], Unica[®], urban{code}[®], Watson, WebSphere[®], Worklight[®], X-Force[®] and System z[®] Z/OS, are trademarks of International Business Machines Corporation, registered in many jurisdictions worldwide. Other product and service names might be trademarks of IBM or other companies. A current list of IBM trademarks is available on the Web at "Copyright and trademark information" at: www.ibm.com/legal/copytrade.shtml.